



11264 INSTALLATION INSTRUCTIONS



Safety glasses should be worn at all times while installing this product.

YEARS: 2004-2008
2002-2006

MAKE: NISSAN
NISSAN

MODEL: MAXIMA
ALTIMA

STYLE: SEDAN
SEDAN

WARNING: NEVER EXCEED YOUR VEHICLE MANUFACTURER'S RECOMMENDED TOWING CAPACITY

WEIGHT CARRYING:
TRAILER WEIGHT: 2,000 LBS.
TONGUE WEIGHT: 200 LBS.

WARNING:
WE RECOMMEND THE USE OF 18050 STABILIZING STRAPS FOR ALL NON-TRAILER (WHEEL-LESS) LOADS. PLEASE SEE THE CURT CATALOG OR VISIT US ONLINE AT WWW.CURTMFG.COM FOR FURTHER INFORMATION.

INSTALLATION TIME: 35 MIN.

THE INSTALL TIME LISTED IS FOR PROFESSIONAL INSTALLERS. IF YOU ARE HESITANT TO UNDERTAKE THIS TASK ON YOUR OWN, CONTACT AN AUTHORIZED CURT INSTALLER FOR ADDITIONAL ASSISTANCE.


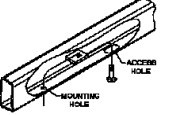
INSTALLATION TIPS:

1. BEFORE YOU BEGIN INSTALLATION, READ ALL INSTRUCTIONS THOROUGHLY.
2. TO EASE INSTALLATION, 2 PEOPLE MAY BE REQUIRED.
3. USING PROPER TOOLS WILL GREATLY IMPROVE THE QUALITY OF THE INSTALL AND REDUCE THE TIME REQUIRED.
4. NEED HELP OR HAVE SOME QUESTIONS? CALL TECHNICAL SUPPORT AT 800.798.0813

INSTALLATION REQUIRES:

	 12mm 11/16" 3/4"	
RATCHET	SOCKET	TORQUE WRENCH
		
DIE GRINDER	UTILITY KNIFE	SAFETY GLASSES

LEVEL OF DIFFICULTY: MODERATE

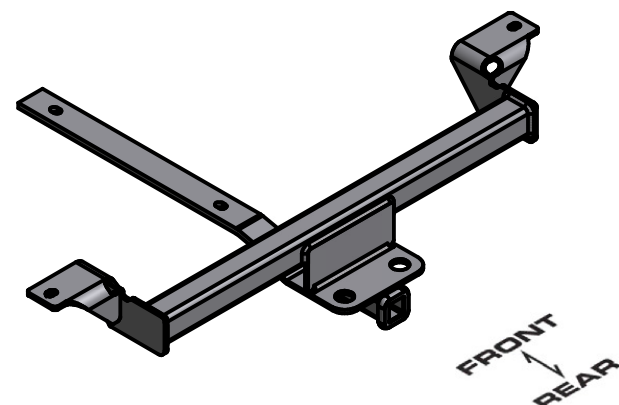
EASY	MODERATE	CHALLENGING
	HOLE ENLARGEMENT	
	FISHWIRE	

VEHICLE PHOTO:



REPRESENTATIVE PHOTO

HITCH ILLUSTRATION:



MAKE SURE YOUR HITCH MATCHES

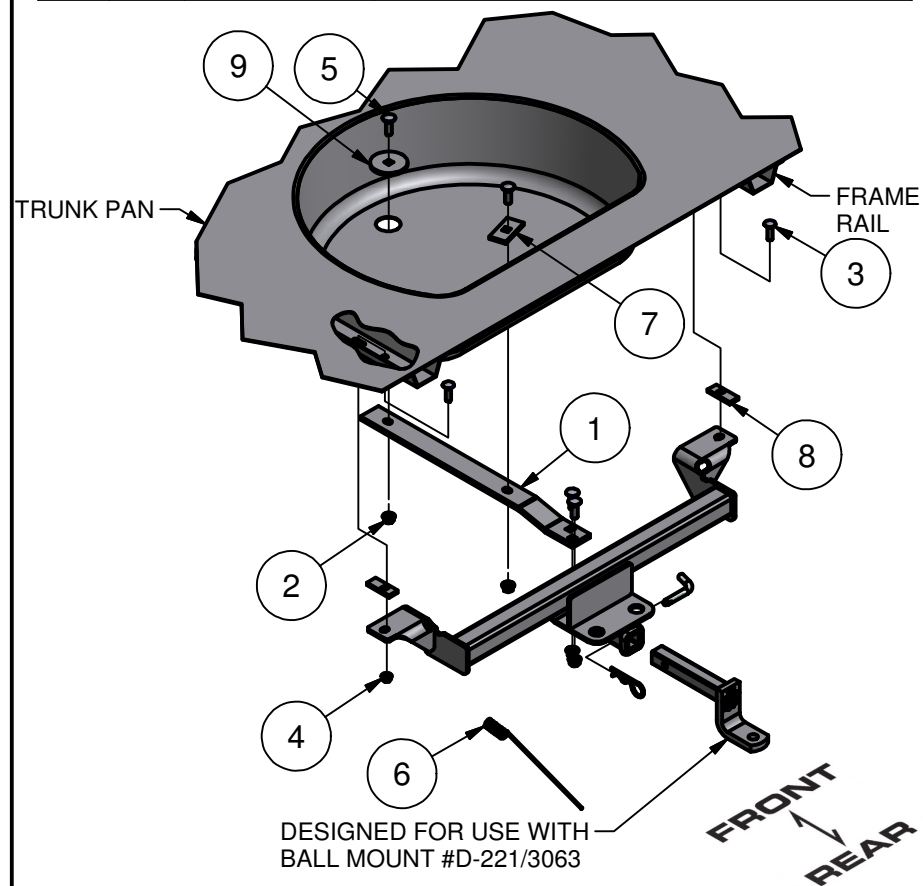
PERIODICALLY CHECK THIS RECEIVER HITCH TO ENSURE ALL FASTENERS ARE TIGHT AND ALL STRUCTURAL COMPONENTS ARE SOUND
CURT Manufacturing LLC. warrants this product to be free of defects in material and/or workmanship at the time of retail purchase by the original purchaser. If the product is found to be defective, Curt Manufacturing LLC. may repair or replace the product at their option, when the product is returned, prepaid, with proof of purchase. Alteration to, misuse of, or improper installation of this product voids the warranty. Curt Manufacturing LLC.'s liability is limited to repair or replacement of products found to be defective, and specifically excludes liability for incidental or consequential loss or damage.

For more information log onto www.curtmfg.com, & for helpful towing tips log onto www.hitchinfo.com

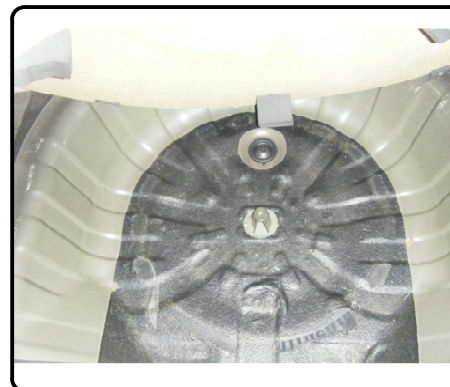
2/14/2012

INSTALLATION WALKTHROUGH:

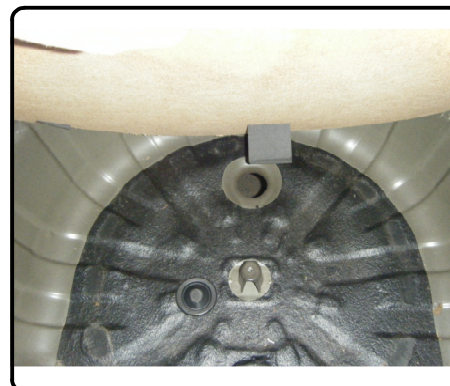
Parts List			
ITEM	QTY	PART NUMBER	DESCRIPTION
1	1	CM-11264-TS	.375" X 2.00" TRUNK STRAP
2	4	HFN 1213	HEX FLANGE NUT
3	2	7/16-14 x 1 1/2	CARRIAGE BOLT
4	2	7/16-14	HEX FLANGE NUT
5	4	1/2-13 x 1 1/2	CARRIAGE BOLT
6	1	CM-438-FW	7/16 " FISHWIRE TOOL
7	1	CM-SP4	.250 x 1.50 x 3.00" SQUARE HOLE SPACER
8	2	CM-SP11	.250 x 1.00 x 2.50" SQUARE HOLE SPACER
9	1	CM-SP62	.250" SPACER PLATE



1) Remove spare tire from trunk.



2) In floor of trunk pan, remove rubber plug from front drain hole. Remove bonded covering from rear drain hole.



For more information log onto www.curtmfg.com, & for helpful towing tips log onto www.hitchinfo.com

INSTALLATION WALKTHROUGH:

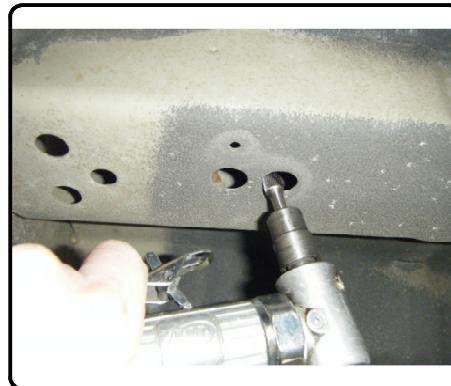
3) Lower exhaust by removing hanger bracket/brackets from end of muffler/mufflers.



4) Remove plastic rivets from supports on bottom edge of bumper fascia. Rivets are released by first pulling out center post approximately 1/4". Rivet can then be pushed out by hand.



5) Remove material between adjacent holes in frame rail using metal shears or die grinder. Enlarge opening to allow the head of a 7/16" carriage bolt to pass through. Repeat for other side of vehicle.

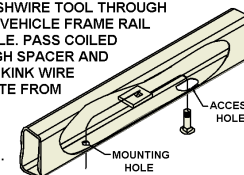


6) Fishwire 7/16" carriage bolt and small spacer block through enlarged access hole in frame rail and out existing hole in frame rail.

FISHWIRE TECHNIQUE

INSERT COILED END OF FISHWIRE TOOL THROUGH HITCH MOUNTING HOLE IN VEHICLE FRAME RAIL AND OUT THE ACCESS HOLE. PASS COILED END OF FISHWIRE THROUGH SPACER AND THREAD BOLT INTO COIL. KINK WIRE TO KEEP SPACER SEPARATE FROM BOLT AS SHOWN. PULL FISHWIRE, SPACER, AND BOLT THROUGH FRAME AND OUT MOUNTING HOLE. USE FISHWIRE TO GUIDE HITCH DURING MOUNTING AND PREVENT LOSS OF BOLT / SPACER INSIDE FRAME RAIL.

NOTE: SOME VEHICLES MAY FISHWIRE THROUGH END OF FRAME



INSTALLATION WALKTHROUGH:

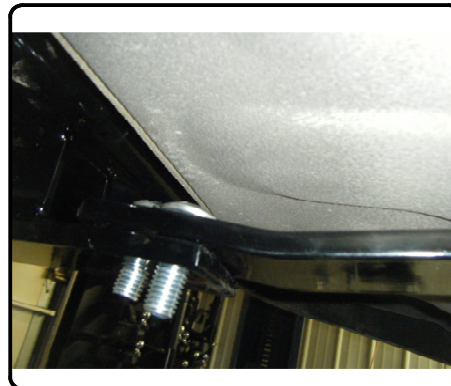
7) Raise hitch into position while holding plastic fascia support fingers back to allow hitch main body to fit up into cavity behind bumper.



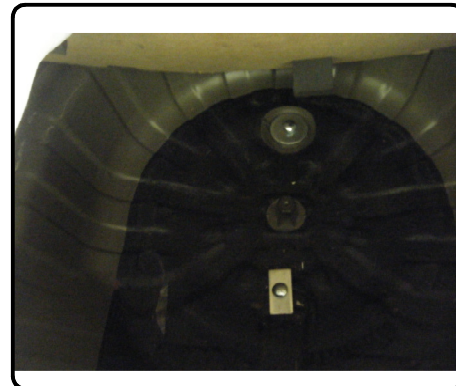
8) Being careful not to push bolts back into frame, lift hitch into position. Install flange nuts, finger tighten.



9) Attach trunk strap to top surface of mounting tab on hitch receiver using 1/2" carriage bolts and flange nuts.



10) Using silicone compound to ensure an air tight seal, install large spacer blocks and 1/2" carriage bolts through drain holes in trunk pan and through holes in trunk strap. Install flange nuts, finger tighten.



INSTALLATION WALKTHROUGH:

11) Adjust large spacers, trunk strap and hitch to be square with vehicle. Torque all 7/16" fasteners to 50 lb-ft, all 1/2" fasteners to 75 lb-ft.



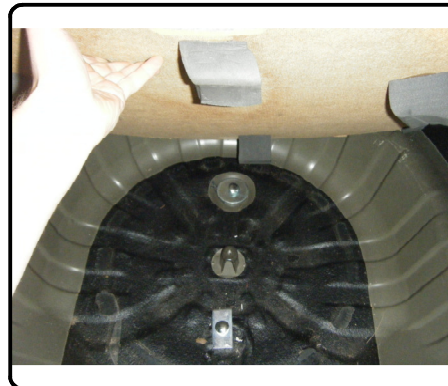
12) Re-attach bumper fascia using plastic rivets removed in step 4.



13) Raise exhaust and re-attach muffler hanger bracket/brackets.



14) Replace spare tire. Install is now complete.



11264

2004-2008 NISSAN MAXIMA; 2002-2006 NISSAN ALTIMA

2/13/2012

GROSS LOAD CAPACITY WHEN USED AS A WEIGHT CARRYING HITCH: 2000 LBS. TRAILER WEIGHT & 200 LBS. TONGUE WEIGHT.

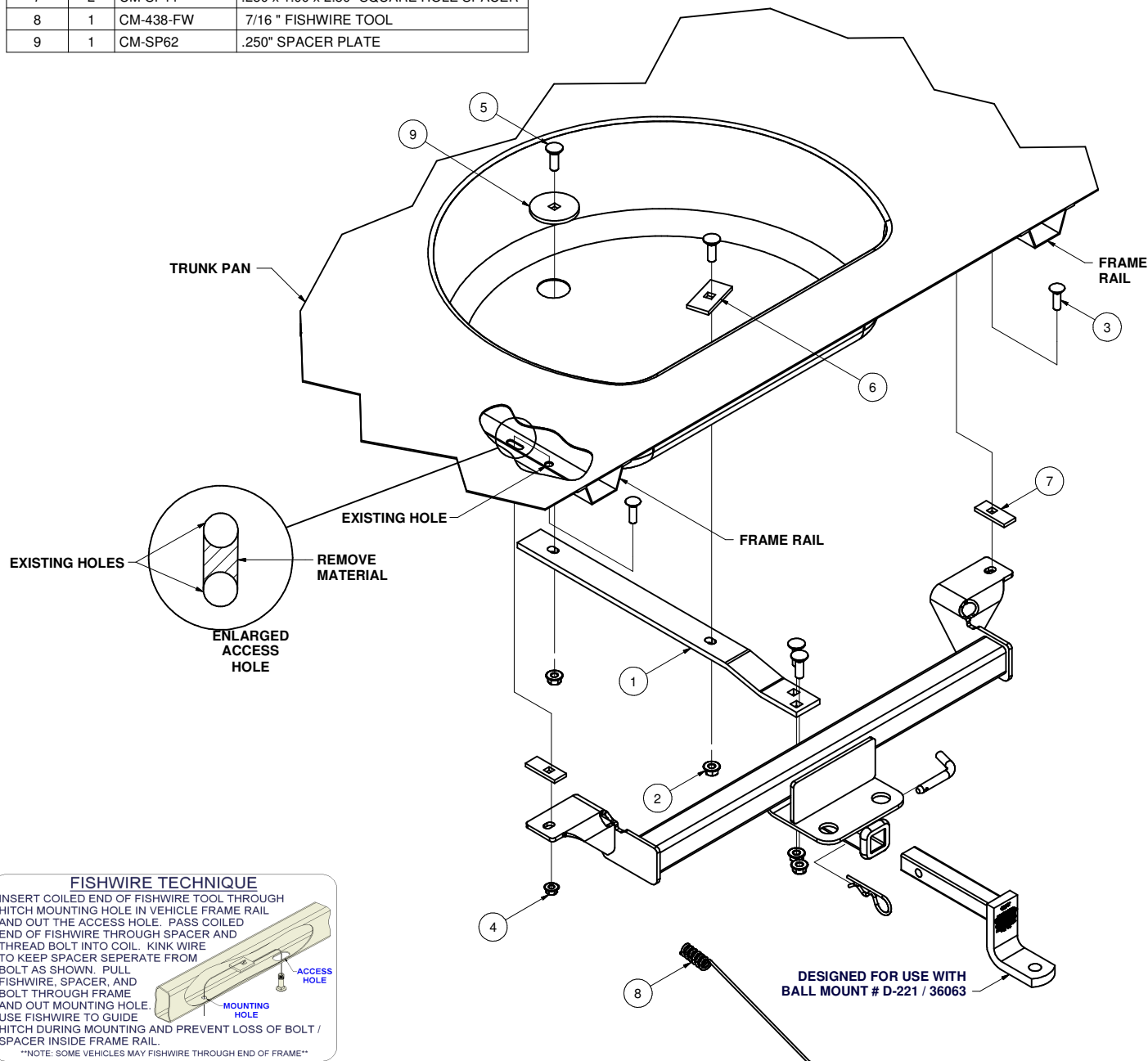
DO NOT EXCEED VEHICLE MANUFACTURER'S RECOMMENDED TOWING CAPACITY.

WARNING: ALL NON-TRAILER LOADS APPLIED TO THIS PRODUCT MUST BE SUPPORTED BY AUXILIARY STABILIZING STRAPS.

** FAILURE TO PROPERLY SUPPORT NON-TRAILER LOADS WILL VOID PRODUCT WARRANTY**

HAVING INSTALLATION QUESTIONS? CALL TECHNICAL SUPPORT AT 1-800-798-0813

Parts List			
ITEM	QTY	PART NUMBER	DESCRIPTION
1	1	CM-11264-TS	.375" X 2.00 TRUNK STRAP
2	4	HFN 1213	HEX FLANGE NUT
3	2	7/16-14 x 1 1/2	CARRIAGE BOLT
4	2	7/16-14	HEX FLANGE NUT
5	4	1/2-13 x 1 1/2	CARRIAGE BOLT
6	1	CM-SP4	.250 x 1.50 x 3.00" SQUARE HOLE SPACER
7	2	CM-SP11	.250 x 1.00 x 2.50" SQUARE HOLE SPACER
8	1	CM-438-FW	7/16" FISHWIRE TOOL
9	1	CM-SP62	.250" SPACER PLATE



PERIODICALLY CHECK THIS RECEIVER HITCH TO ENSURE THAT ALL FASTENERS ARE TIGHT AND THAT ALL STRUCTURAL COMPONENTS ARE SOUND.

Curt Manufacturing Inc., warrants this product to be free of defects in material and/or workmanship at the time of retail purchase by the original purchaser. If the product is found to be defective, Curt Manufacturing Inc., may repair or replace the product, at their option, when the product is returned, prepaid, with proof of purchase. Alteration to, misuse of, or improper installation of this product voids the warranty. Curt Manufacturing Inc.'s liability is limited to repair or replacement of products found to be defective, and specifically excludes liability for incidental or consequential loss or damage.

11264

2004 - 2008 NISSAN MAXIMA

2/18/2009

GROSS LOAD CAPACITY WHEN USED AS A WEIGHT CARRYING HITCH: 2,000 LBS. TRAILER WEIGHT & 200 LBS. TONGUE WEIGHT.
*****DO NOT EXCEED VEHICLE MANUFACTURER'S RECOMMENDED TOWING CAPACITY.*****

HITCH WEIGHT: 24 LBS.
INSTALL TIME: 45 MINUTES
INSTALL NOTES:
- DRILLING REQUIRED
- LOWER EXHAUST
- REMOVE SPARE

- 1) Remove spare tire from trunk.
- 2) In floor of trunk pan, remove rubber plug from front drain hole. Remove bonded covering from rear drain hole.
- 3) Lower exhaust by removing hanger bracket/brackets from end of muffler/mufflers.
- 4) Remove plastic rivets from supports on bottom edge of bumper fascia. Rivets are released by first pulling out center post approximately 1/4". Rivet can then be pushed out by hand.
- 5) Referring to illustration, remove material between adjacent holes in frame rail using metal shears or die grinder. Dress sides of hole with file and enlarge opening to allow the head of a 7/16" carriage bolt to pass through. Repeat for other side of vehicle.
- 6) Fishwire 7/16" carriage bolt and small spacer block through enlarged access hole in frame rail and out existing hole in frame rail.
- 7) Raise hitch into position while holding plastic fascia support fingers back to allow hitch main body to fit up into cavity behind bumper.
- 8) Being careful not to push bolts back into frame, lift hitch into position. Install flange nuts, finger tighten.
- 9) Attach trunk strap to top surface of mounting tab on hitch receiver using 1/2" carriage bolts and flange nuts.
- 10) Using silicone compound to ensure an air tight seal, install large spacer blocks and 1/2" carriage bolts through drain holes in trunk pan and through holes in trunk strap. Install flange nuts, finger tighten.
- 11) Adjust large spacers, trunk strap and hitch to be square with vehicle.
- 12) Torque all 7/16" fasteners to 50 lb-ft, all 1/2" fasteners to 75 lb-ft.
- 13) Re-attach bumper fascia using plastic rivets removed in step 4.
- 14) Raise exhaust and re-attach muffler hanger bracket/brackets.
- 15) Replace spare tire.

PERIODICALLY CHECK THIS RECEIVER HITCH TO ENSURE THAT ALL FASTENERS ARE TIGHT AND THAT ALL STRUCTURAL COMPONENTS ARE SOUND.

Curt Manufacturing Inc., warrants this product to be free of defects in material and/or workmanship at the time of retail purchase by the original purchaser. If the product is found to be defective, Curt Manufacturing Inc., may repair or replace the product, at their option, when the product is returned, prepaid, with proof of purchase. Alteration to, misuse of, or improper installation of this product voids the warranty. Curt Manufacturing Inc.'s liability is limited to repair or replacement of products found to be defective, and specifically excludes liability for incidental or consequential loss or damage.