

YEARS: 2011-PRESENT

MAKE: HYUNDAI

MODEL: ELANTRA

STYLE: SEDAN/COUPE

**WARNING: NEVER EXCEED YOUR VEHICLE MANUFACTURER'S RECOMMENDED TOWING CAPACITY**

**WEIGHT CARRYING:**  
 TRAILER WEIGHT: 2,000 LBS.  
 TONGUE WEIGHT: 200 LBS.

**WARNING:**  
 WE RECOMMEND THE USE OF 18050 STABILIZING STRAPS FOR ALL NON-TRAILER (WHEEL-LESS) LOADS. PLEASE SEE THE CURT CATALOG OR VISIT US ONLINE AT [WWW.CURTMFG.COM](http://WWW.CURTMFG.COM) FOR FURTHER INFORMATION.

**INSTALLATION TIME: 30 MIN.**

THE INSTALL TIME LISTED IS FOR PROFESSIONAL INSTALLERS. IF YOU ARE HESITANT TO UNDERTAKE THIS TASK ON YOUR OWN, CONTACT AN AUTHORIZED CURT INSTALLER FOR ADDITIONAL ASSISTANCE.

**INSTALLATION TIPS:**

- BEFORE YOU BEGIN INSTALLATION, READ ALL INSTRUCTIONS THOROUGHLY.
- TO EASE INSTALLATION, 2 PEOPLE MAY BE REQUIRED.
- USING PROPER TOOLS WILL GREATLY IMPROVE THE QUALITY OF THE INSTALL AND REDUCE THE TIME REQUIRED.
- NEED HELP OR HAVE SOME QUESTIONS? CALL TECHNICAL SUPPORT AT 800.798.0813

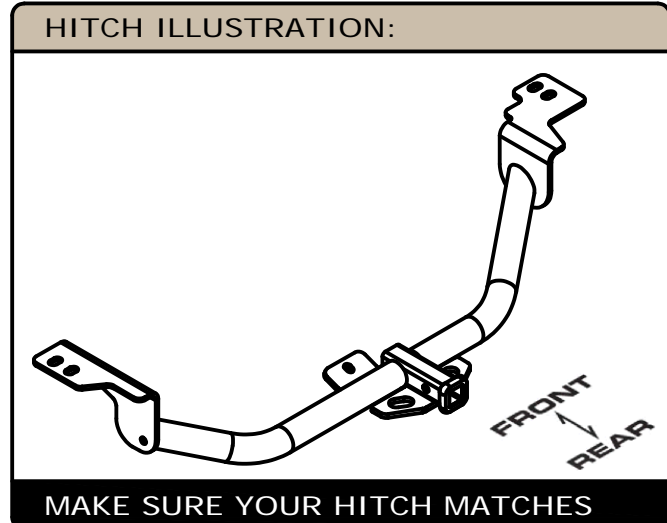


**INSTALLATION REQUIRES:**

<b>DIE GRINDER</b>	<b>RATCHET</b>	<b>TORQUE WRENCH</b>
<b>3/4" 10mm SOCKET</b>	<b>SAFETY GLASSES</b>	<b>AVIATION SHEARS (COUPE MODELS)</b>
<b>MARKER (COUPE MODELS)</b>	<b>SCREW DRIVER (COUPE MODELS)</b>	

**LEVEL OF DIFFICULTY: MODERATE**

EASY	MODERATE	CHALLENGING
	<b>HOLE ENLARGEMENT</b>	
	<b>REVERSE FISHWIRE</b>	
	<b>REMOVE RUBBER ISOLATORS FROM MUFFLER TO LOWER THE EXHAUST</b>	
	<b>DRILL HOLES ON KOREAN BUILT MODELS (1 PER SIDE) (SEE VEHICLE DOOR STICKER FOR BUILD LOCATION)</b>	
	<b>PLASTIC TRIMMING (COUPE MODELS)</b>	



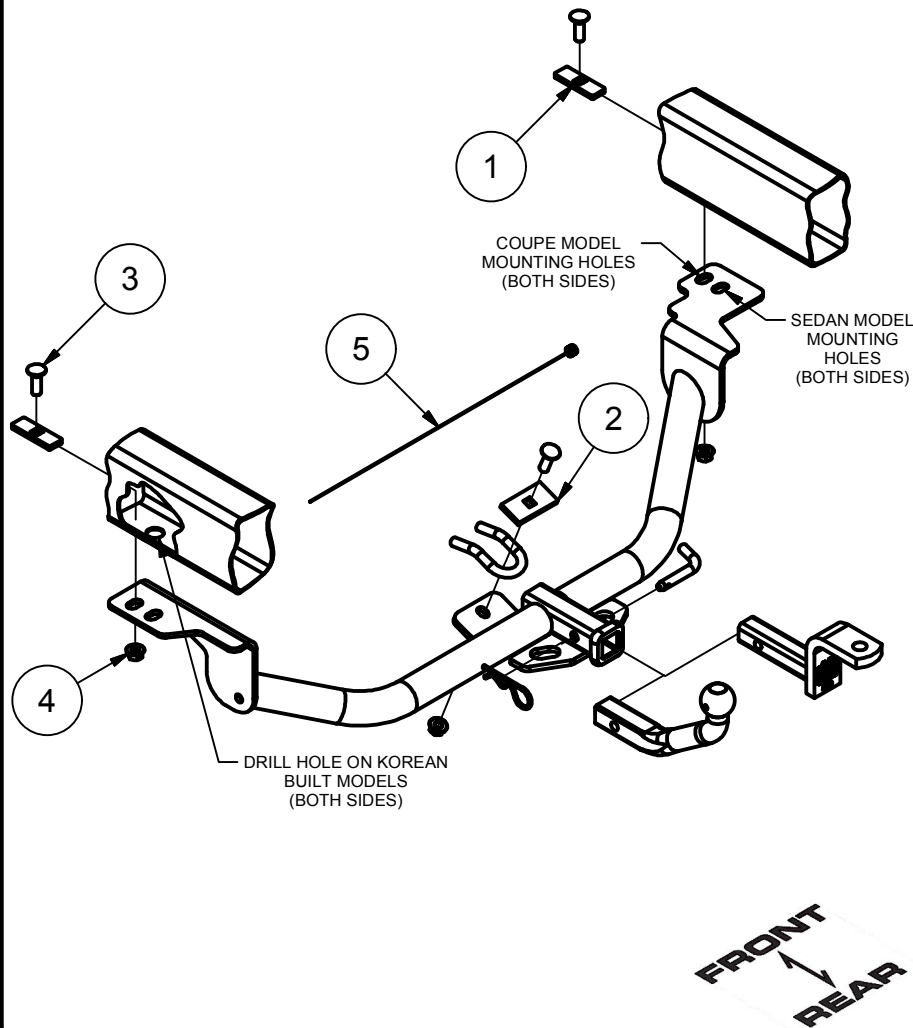
**PERIODICALLY CHECK THIS RECEIVER HITCH TO ENSURE ALL FASTENERS ARE TIGHT AND ALL STRUCTURAL COMPONENTS ARE SOUND**

CURT Manufacturing LLC. warrants this product to be free of defects in material and/or workmanship at the time of retail purchase by the original purchaser. If the product is found to be defective, Curt Manufacturing LLC. may repair or replace the product at their option, when the product is returned, prepaid, with proof of purchase. Alteration to, misuse of, or improper installation of this product voids the warranty. Curt Manufacturing LLC.'s liability is limited to repair or replacement of products found to be defective, and specifically excludes liability for incidental or consequential loss or damage.

For more information log onto [www.curtmfg.com](http://www.curtmfg.com), & for helpful towing tips log onto [www.hitchinfo.com](http://www.hitchinfo.com)

# INSTALLATION WALKTHROUGH:

Parts List			
ITEM	QTY	PART NUMBER	DESCRIPTION
1	2	CM-SP6	.250 x 1.00 x 3.00" SQUARE HOLE SPACER
2	1	CM-SP4	.250 x 1.50 x 3.00" SQUARE HOLE SPACER
3	3	1/2-13 x 1 1/2	CARRIAGE BOLT
4	3	HFN 1213	HEX FLANGE NUT
5	1	1_2 FISHWIRE	1/2" FISHWIRE



1. Lower exhaust to ease installation.



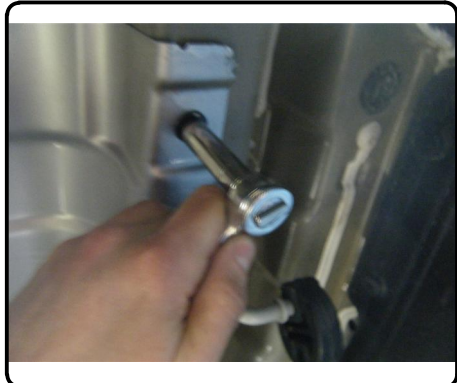
**RUBBER ISOLATOR REMOVAL DIAGRAM**

This technique can be used if and Exhaust Hanger Removal Pliers is not available.

Using a 5/8" open end wrench, slide the wrench up to the rubber isolator, cradling the hanger rod as shown. Next place the flat edge of a pry bar between the wrench and the hanger stop or hanger rod. Then simply rotate the pry bar toward the wrench to remove the rubber isolator.

Note: Using a spray lubricant or soapy water on the hanger rod and the rubber isolator helps removal.

2. Remove heat shield from passenger side

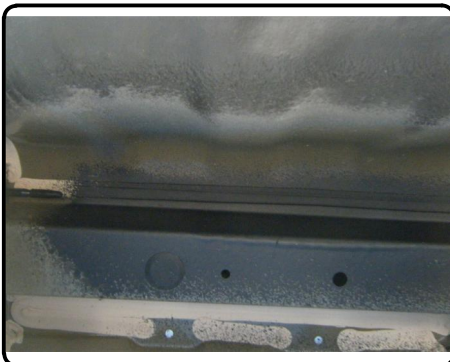


## INSTALLATION WALKTHROUGH:

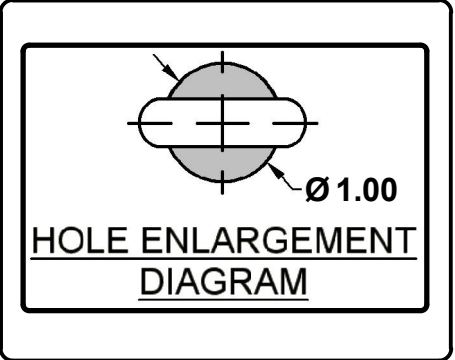
3. Coupe models only:  
Remove plastic from driver side using a screwdriver and a 10mm socket. Keep hardware to reattach panel after hitch installation.



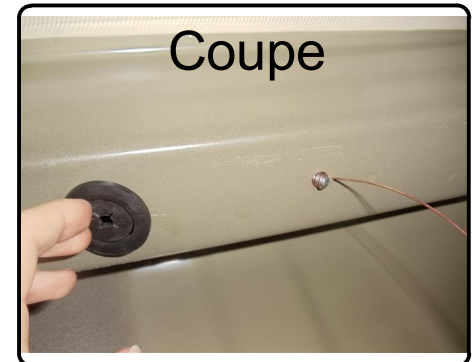
4. Locate and remove rear rubber cap from driver and passenger side frame rail.  
(Discard cap on Sedan vehicles only.)



5. Enlarge driver and passenger side mounting holes enough to allow 1/2-13 carriage bolts and CM-SP6 spacers to pass through. (SEE HOLE ENLARGEMENT DIAGRAM.) **NOTE:** Korean built models only. Raise hitch into position using hitch as a template, mark and drill holes large enough to allow 1/2-13 carriage bolts and CM-SP6 spacers to pass through. Coupe models: Also enlarge 1/4" hole to allow for 1/2" carriage bolt.

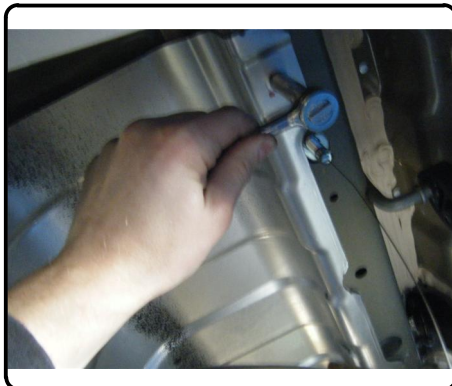


6. Reverse fishwire 1/2-13 carriage bolts and CM-SP6 spacers through the enlarged access hole, both sides.



## INSTALLATION WALKTHROUGH:

7. Reinstall heat shield on passenger side.



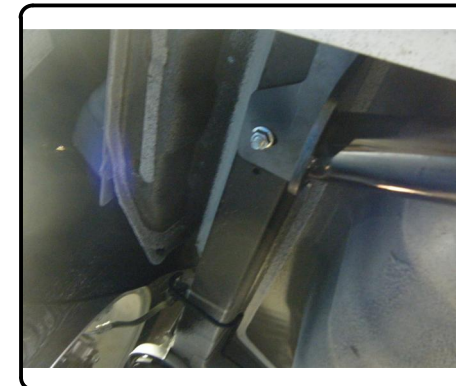
8. Install 1/2-13 carriage bolt and CM-SP4 spacer through top of existing vehicle tow loop, as shown.



9. Raise hitch into position by raising passenger side of hitch over exhaust first. (The heat shield will be sandwich between the side plate and frame rail.) Loosely install 1/2-13 flanged nut onto carriage bolt from step 7.

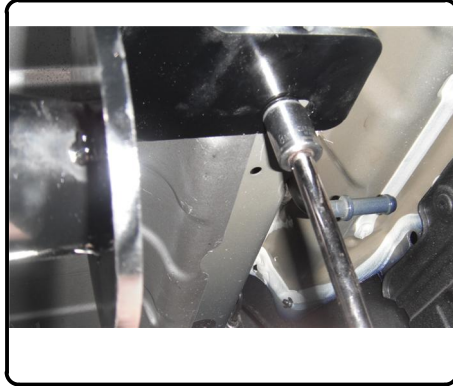


10. Loosely install 1/2-13 flanged nut onto carriage bolt from both frame rails.

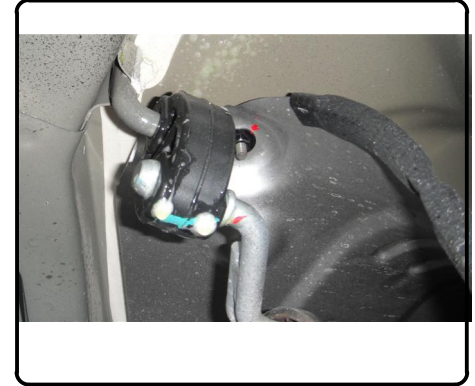


## INSTALLATION WALKTHROUGH:

11. Torque 1/2-13 hardware to 110 lb-ft.



13. Raise exhaust back into position.



12. On Coupe models, trim plastic on drivers side of vehicle as shown and reinstall back into position.



14. Installation is now complete.



11303

# HYUNDAI ELANTRA SEDAN/COUPE

9/10/2012

GROSS LOAD CAPACITY WHEN USED AS A WEIGHT CARRYING HITCH: 2,000 LBS. TRAILER WEIGHT & 200 LBS. TONGUE WEIGHT.

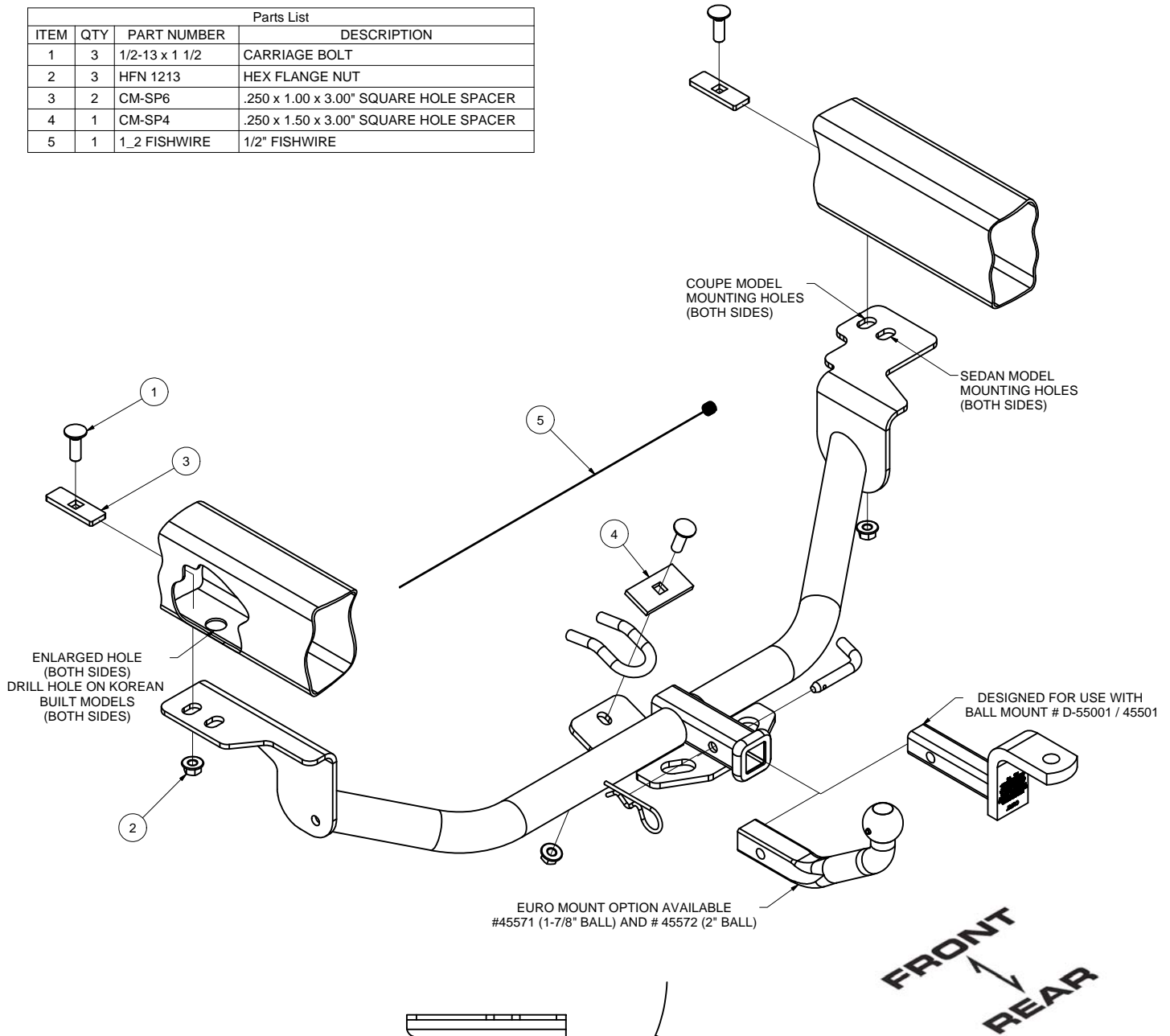
\*\*\*DO NOT EXCEED VEHICLE MANUFACTURER'S RECOMMENDED TOWING CAPACITY.\*\*\*

WARNING: ALL NON-TRAILER LOADS APPLIED TO THIS PRODUCT MUST BE SUPPORTED BY 18050 STABILIZING STRAPS.

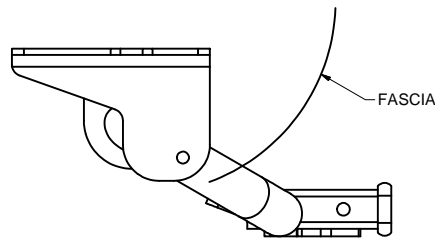
\*\* FAILURE TO PROPERLY SUPPORT NON-TRAILER LOADS WILL VOID PRODUCT WARRANTY\*\*

HAVING INSTALLATION QUESTIONS? CALL TECHNICAL SUPPORT AT 1-800-798-0813

Parts List				
ITEM	QTY	PART NUMBER	DESCRIPTION	
1	3	1/2-13 x 1 1/2	CARRIAGE BOLT	
2	3	HFN 1213	HEX FLANGE NUT	
3	2	CM-SP6	.250 x 1.00 x 3.00" SQUARE HOLE SPACER	
4	1	CM-SP4	.250 x 1.50 x 3.00" SQUARE HOLE SPACER	
5	1	1_2 FISHWIRE	1/2" FISHWIRE	



EURO MOUNT OPTION AVAILABLE  
#45571 (1-7/8" BALL) AND # 45572 (2" BALL)



INSTALLED HITCH POSITION

HITCH WEIGHT: 33 LBS.

**INSTALL TIME**

PROFESSIONAL: 30 MINUTES

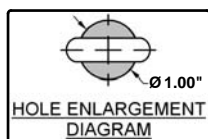
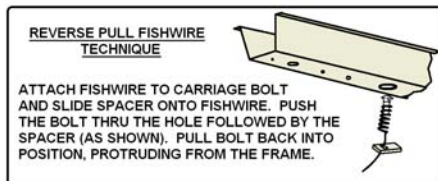
NOVICE (DIY): 60 MINUTES

**INSTALL NOTES:**

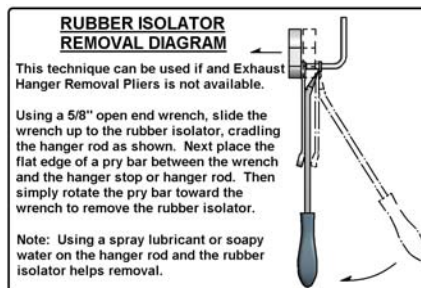
- HOLE ENLARGMENT REQUIRED
- DRILL HOLE ON KOREAN BUILT MODELS
- LOWER EXHAUST
- FISHWIRE HARDWARE

**PERIODICALLY CHECK THIS RECEIVER HITCH TO ENSURE THAT ALL FASTENERS ARE TIGHT AND THAT ALL STRUCTURAL COMPONENTS ARE SOUND.**

Curt Manufacturing Inc., warrants this product to be free of defects in material and/or workmanship at the time of retail purchase by the original purchaser. If the product is found to be defective, Curt Manufacturing Inc., may repair or replace the product, at their option, when the product is returned, prepaid, with proof of purchase. Alteration to, misuse of, or improper installation of this product voids the warranty. Curt Manufacturing Inc.'s liability is limited to repair or replacement of products found to be defective, and specifically excludes liability for incidental or consequential loss or damage.



TOOLS REQUIRED
SOCKET WRENCH
TORQUE WRENCH
3/4 SOCKET
10 mm SOCKET
DIE GRINDER
SCREWDRIVER
SHEARS



## INSTALLATION STEPS

1. Lower exhaust to ease installation. (SEE RUBBER ISOLATOR REMOVAL DIAGRAM)
2. Remove heat shield from passenger side.
3. Coupe models only: Remove plastic from driver side using a screwdriver and a 10mm socket. Keep hardware to reattach panel after hitch installation.
4. Locate and remove rear rubber cap from driver and passenger side frame rail. (Discard cap on Sedan vehicles only.)
5. Enlarge driver and passenger side mounting holes enough to allow 1/2-13 carriage bolts and CM-SP6 spacers to pass through. (SEE HOLE ENLARGEMENT DIAGRAM.)  
**NOTE:** Korean built models only. Raise hitch into position using hitch as a template, mark and drill holes large enough to allow 1/2-13 carriage bolts and CM-SP6 spacers to pass through.  
Coupe models: Also enlarge 1/4" hole to allow for 1/2" carriage bolt.
6. Reverse fishwire 1/2-13 carriage bolts and CM-SP6 spacers through the enlarged access hole, both sides. (SEE REVERSE FISHWIRE TECHNIQUE.)
7. Reinstall heat shield on passenger side.
8. Install 1/2-13 carriage bolt and CM-SP4 spacer through top of existing vehicle tow loop, as shown.
9. Raise hitch into position by raising passenger side of hitch over exhaust first. (The heat shield will be sandwiched between the side plate and frame rail.) Then raise driver side of hitch.  
Loosely install 1/2-13 flanged nut onto carriage bolt from step 7.
10. Loosely install 1/2-13 flanged nut onto carriage bolt from both side rails.
11. Torque 1/2-13 hardware to 110 lb-ft.
12. On Coupe models, trim plastic on driver side of vehicle as shown and reinstall back into position.
13. Raise exhaust back into position.

**PERIODICALLY CHECK THIS RECEIVER HITCH TO ENSURE THAT ALL FASTENERS ARE TIGHT AND THAT ALL STRUCTURAL COMPONENTS ARE SOUND.**