

11352

NISSAN MAXIMA SEDAN AND ALTIMA SEDAN (INCLUDING HYBRID)

9/16/2009

GROSS LOAD CAPACITY WHEN USED AS A WEIGHT CARRYING HITCH: 2,000 LBS. TRAILER WEIGHT & 200 LBS. TONGUE WEIGHT.

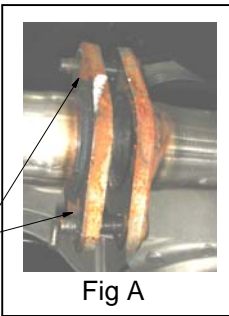
DO NOT EXCEED VEHICLE MANUFACTURER'S RECOMMENDED TOWING CAPACITY.

WARNING: ALL NON-TRAILER LOADS APPLIED TO THIS PRODUCT MUST BE SUPPORTED BY AUXILIARY STABILIZING STRAPS.

** FAILURE TO PROPERLY SUPPORT NON-TRAILER LOADS WILL VOID PRODUCT WARRANTY**

HAVING INSTALLATION QUESTIONS? CALL TECHNICAL SUPPORT AT 1-800-798-0813

Parts List			
ITEM	QTY	PART NUMBER	DESCRIPTION
1	1	1/2"	FISHWIRE TOOL
2	4	CM-SP6	.250 x 1.00 x 3.00" SQUARE HOLE SPACER
3	4	1/2-13 x 1	CARRIAGE BOLT
4	4	HFN 1213	HEX FLANGE NUT



FISHWIRE TECHNIQUE

INSERT COILED END OF FISHWIRE TOOL THROUGH HITCH MOUNTING HOLE IN VEHICLE FRAME RAIL AND OUT THE ACCESS HOLE. PASS COILED END OF FISHWIRE THROUGH SPACER AND THREAD BOLT INTO COIL. KINK WIRE TO KEEP SPACER SEPARATE FROM BOLT AS SHOWN. PULL FISHWIRE, SPACER, AND BOLT THROUGH FRAME AND OUT MOUNTING HOLE. USE FISHWIRE TO GUIDE HITCH DURING MOUNTING AND PREVENT LOSS OF BOLT / SPACER INSIDE FRAME RAIL.

NOTE: SOME VEHICLES MAY FISHWIRE THROUGH END OF FRAME

REVERSE PULL FISHWIRE TECHNIQUE

ATTACH FISHWIRE TO CARRIAGE BOLT AND SLIDE SPACER ONTO FISHWIRE. PUSH THE BOLT THRU THE HOLE FOLLOWED BY THE SPACER (AS SHOWN). PULL BOLT BACK INTO POSITION, PROTRUDING FROM THE FRAME.

HITCH WEIGHT: 27 LBS.
 INSTALL TIME
 PROFESSIONAL: 45 MINUTES
 NOVICE (DIY): 90 MINUTES
 INSTALL NOTES:
 -LOWER EXHAUST
 -DRILLING REQUIRED
 -FISHWIRE HARDWARE

EXHAUST FLANGE NUTS

ENLARGE HOLE

ENLARGE HOLE

FRONT
↑
REAR

DESIGNED FOR USE WITH BALLMOUNT #55001 / 45501

- INSTALLATION STEPS**
- 1) Remove the exhaust from vehicle:
 - A) Remove exhaust flange nuts(Fig A) and ground wire (if present) from muffler.
 - B) Pull each exhaust pipe/muffler assembly towards rear of car until the exhaust hanger has cleared the rubber isolator.
 - 2) Remove the heat shields by drilling out the rivets securing them to the frame rails. (Return the heat shields to the vehicle owner.)
 - 3) Enlarge the holes in the frame rails as shown above to allow the CM-SP6 spacer and carriage bolt to pass through.
 - 4) Fishwire 1/2-13 carriage bolt and CM-SP6 spacer through the enlarged hole into the existing rearmost hole in each frame rail as shown.
 - 5) Reverse Pull Fishwire fishwire a 1/2-13 carriage bolt and CM-SP6 spacer into the enlarged hole in each frame rail as shown.
 - 6) Raise the hitch into position over the fishwired hardware and secure with 1/2" flange nuts as shown.
 - 7) Torque all hardware to 75 lb.-ft.
 - 8) Reinstall exhaust removed in Step 1.
- PERIODICALLY CHECK THIS RECEIVER HITCH TO ENSURE THAT ALL FASTENERS ARE TIGHT AND THAT ALL STRUCTURAL COMPONENTS ARE SOUND.

Curt Manufacturing Inc., warrants this product to be free of defects in material and/or workmanship at the time of retail purchase by the original purchaser. If the product is found to be defective, Curt Manufacturing Inc., may repair or replace the product, at their option, when the product is returned, prepaid, with proof of purchase. Alteration to, misuse of, or improper installation of this product voids the warranty. Curt Manufacturing Inc.'s liability is limited to repair or replacement of products found to be defective, and specifically excludes liability for incidental or consequential loss or damage.