

11560 82-88 VOLKSWAGEN QUANTUM WAGON EXCEPT 4WD

4/1/2010

GROSS LOAD CAPACITY WHEN USED AS A WEIGHT CARRYING HITCH: 1,500 LBS. TRAILER WEIGHT & 150 LBS. TONGUE WEIGHT.

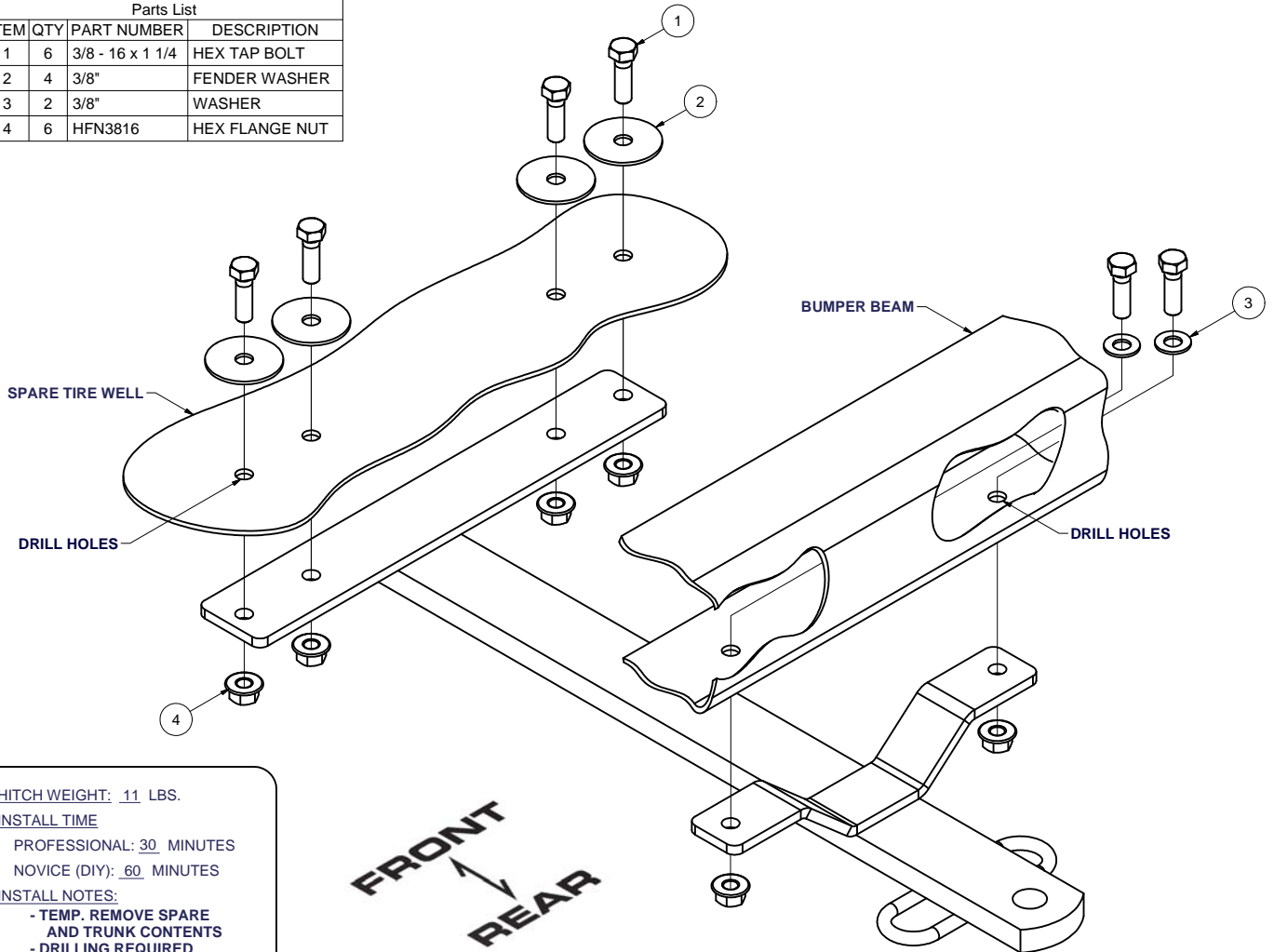
DO NOT EXCEED VEHICLE MANUFACTURER'S RECOMMENDED TOWING CAPACITY.

WARNING: ALL NON-TRAILER LOADS APPLIED TO THIS PRODUCT MUST BE SUPPORTED BY 18050 STABILIZING STRAPS.

** FAILURE TO PROPERLY SUPPORT NON-TRAILER LOADS WILL VOID PRODUCT WARRANTY**

HAVING INSTALLATION QUESTIONS? CALL TECHNICAL SUPPORT AT 1-800-798-0813

Parts List			
ITEM	QTY	PART NUMBER	DESCRIPTION
1	6	3/8 - 16 x 1 1/4	HEX TAP BOLT
2	4	3/8"	FENDER WASHER
3	2	3/8"	WASHER
4	6	HFN3816	HEX FLANGE NUT



HITCH WEIGHT: 11 LBS.

INSTALL TIME

PROFESSIONAL: 30 MINUTES

NOVICE (DIY): 60 MINUTES

INSTALL NOTES:

- TEMP. REMOVE SPARE AND TRUNK CONTENTS
- DRILLING REQUIRED
- SILICONE HARDWARE

INSTALLATION STEPS

1. Remove the spare tire and clear trunk of contents. Position the hitch against the underside of the spare tire well and the rear bumper as shown. Support the hitch in place making sure it is square and centered on the vehicle.
2. Using the hitch as a template, mark and drill the vehicle (4) places in the trunk floor and (2) places in the bumper for 3/8" diameter bolts.
3. Fasten the hitch to the vehicle with fasteners as shown. Install fender washers inside the trunk as shown.
4. Torque all 3/8" fasteners to 30 lb-ft.
5. Use silicone sealant around fasteners in trunk to seal out water and exhaust fumes.
6. Reinstall spare tire and trunk contents removed in step 1.

PERIODICALLY CHECK THIS RECEIVER HITCH TO ENSURE THAT ALL FASTENERS ARE TIGHT AND THAT ALL STRUCTURAL COMPONENTS ARE SOUND.

Curt Manufacturing Inc., warrants this product to be free of defects in material and/or workmanship at the time of retail purchase by the original purchaser. If the product is found to be defective, Curt Manufacturing Inc., may repair or replace the product, at their option, when the product is returned, prepaid, with proof of purchase. Alteration to, misuse of, or improper installation of this product voids the warranty. Curt Manufacturing Inc.'s liability is limited to repair or replacement of products found to be defective, and specifically excludes liability for incidental or consequential loss or damage.