

# FRONT MOUNTED RECEIVER INSTALLATION INSTRUCTIONS

VEHICLE

RECEIVER NO.

FORD HD F250 2WD (GAS)  
F350 2WD (GAS)

13513

## EQUIPMENT REQUIRED:

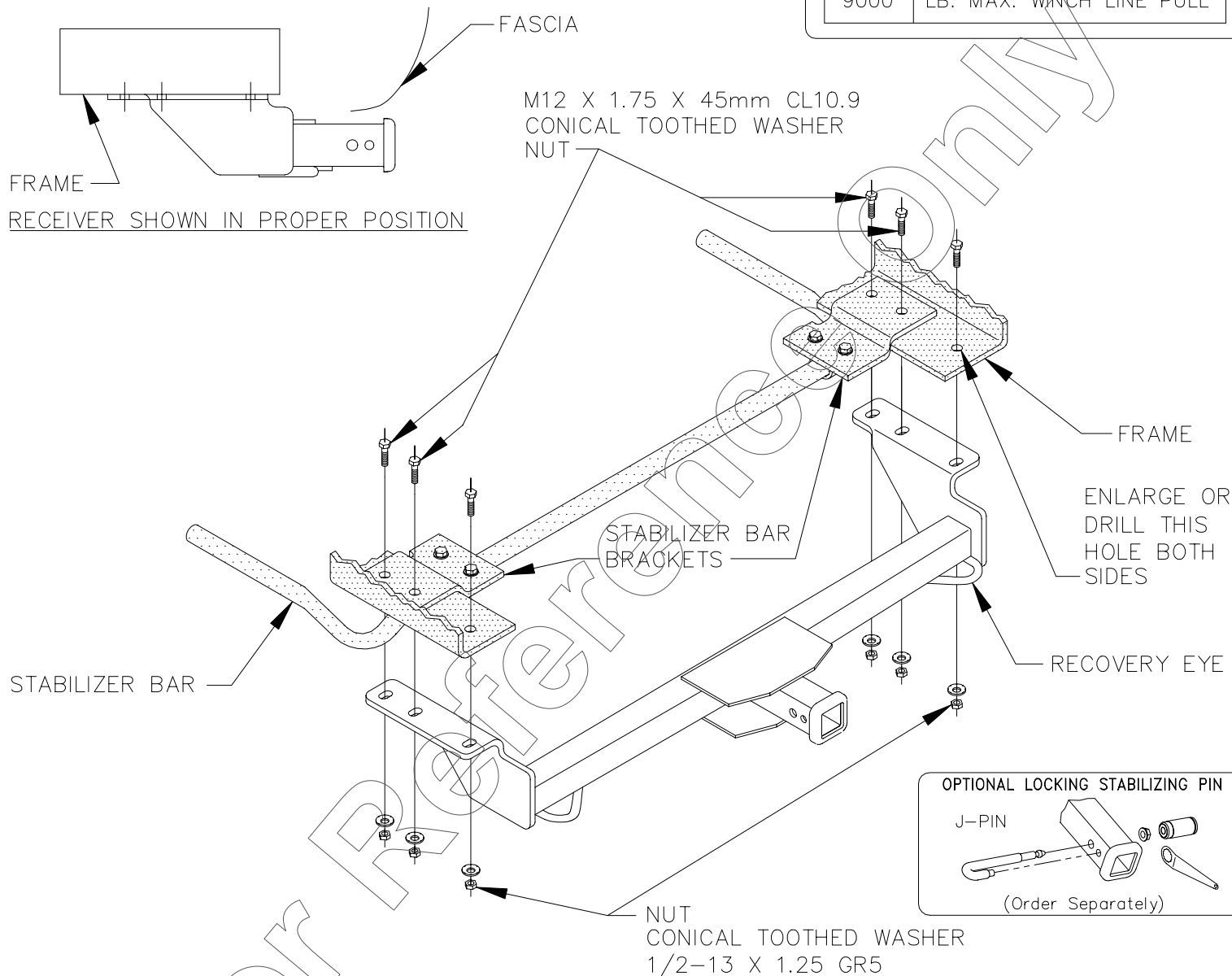
DRILL BITS: 1/2"

HITCH REQUIRES 5/8" PIN AND CLIP IF STABILIZING PIN IS NOT INSTALLED.

WRENCHES: (TIGHTEN ALL FASTENERS WITH TORQUE WRENCH) 3/4", 7/8", 18mm, 19mm

CARGO CAPACITY – DO NOT EXCEED  
500 LB. OR VEHICLE FRONT GROSS  
AXLE WEIGHT RATING. (GAWR)

9000 LB. MAX. WINCH LINE PULL



1. REMOVE EXISTING M12 BOLTS AND HEX NUTS FROM STABILIZER BAR BRACKETS AND FRAME, AND RETURN TO CUSTOMER.
2. REATTACH STABILIZER BAR BRACKETS AND MOUNT RECEIVER UNDERNEATH FRAME WITH THE M12 BOLTS WASHERS AND NUTS SUPPLIED WITH RECEIVER.
3. USING RECEIVER AS TEMPLATE ENLARGE OR DRILL FORWARD HOLES WITH 1/2" DRILL.
4. INSTALL 1/2" FASTENERS AS SHOWN ABOVE.

TIGHTEN ALL 1/2 GR5 FASTENERS TO 75 LB-FT.  
TIGHTEN M12 CL 10.9 FASTENERS TO 75 LB-FT.

APPROX WEIGHT: 36 LB. / 16.3 KG

NOTE: Check receiver frequently, making sure all fasteners are properly tightened. A receiver which has been damaged should be removed and replaced. Observe safety precautions when working beneath a vehicle and wear eye protection.

**WARNING:** DO NOT CUT ACCESS OR ATTACHMENT HOLES WITH A TORCH.  
DO NOT CUT, WELD, OR MODIFY RECEIVER.

Reese Products, INC.  
Elkhart, IN.  
Oakville, ONT. Canada