

# FRONT MOUNTED RECEIVER INSTALLATION INSTRUCTIONS

VEHICLE

RECEIVER NO.

FORD F250HD 2WD & F350  
DIESEL ENGINE ONLY

13514

## EQUIPMENT REQUIRED:

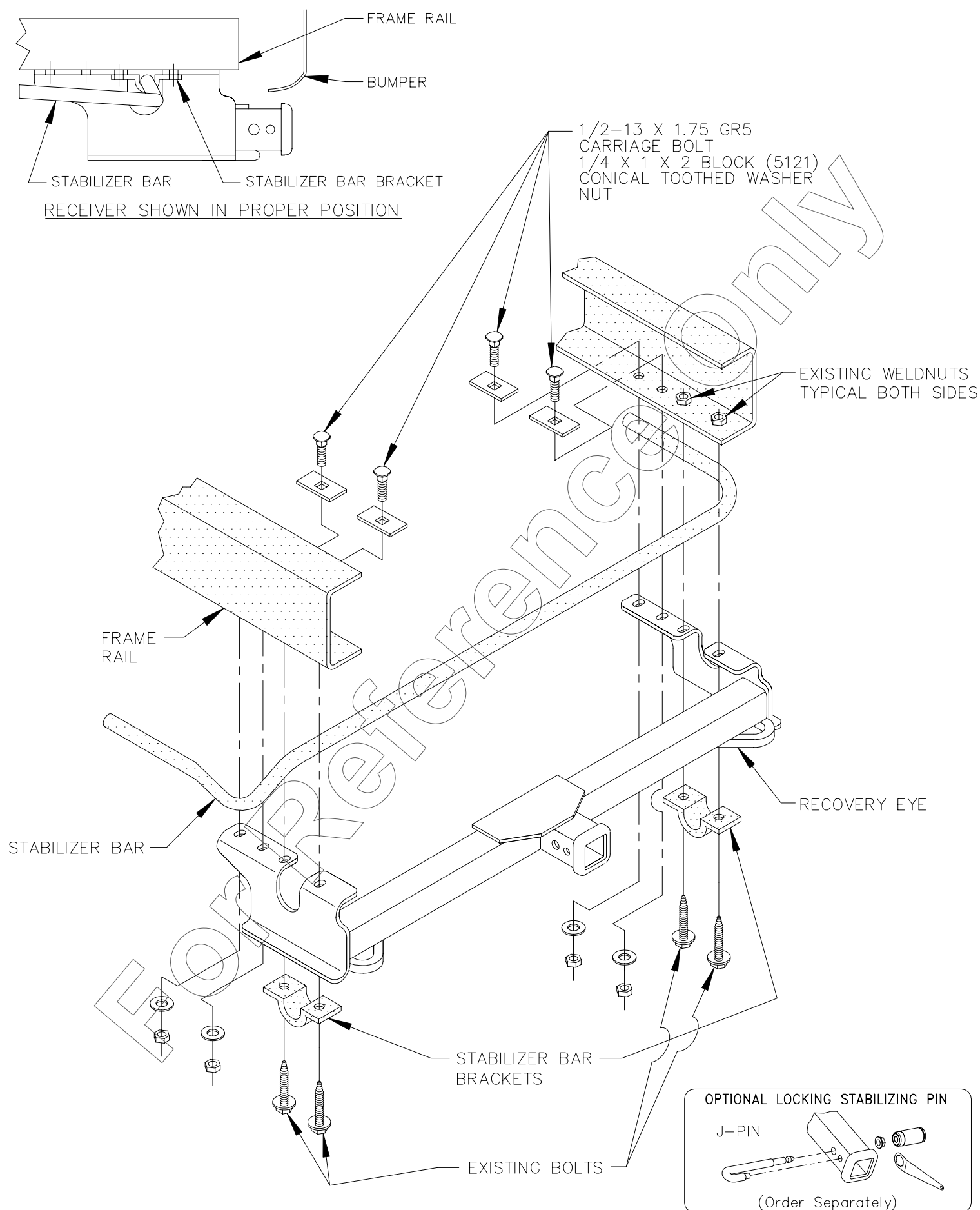
## DRILL BITS:

HITCH REQUIRES 5/8" PIN AND CLIP IF STABILIZING PIN IS NOT INSTALLED.

WRENCHES: (TIGHTEN ALL FASTENERS WITH TORQUE WRENCH) 7/8, 13mm

CARGO CAPACITY – DO NOT EXCEED  
500 LB. OR VEHICLE FRONT GROSS  
AXLE WEIGHT RATING. (GAWR)

9000	LB. MAX. WINCH LINE PULL
------	--------------------------



1. REMOVE STABILIZER BAR FASTENERS AND BRACKETS ALLOWING STABILIZER BAR TO SWING FREE.
2. RAISE STABILIZER BAR, RECEIVER AND STABILIZER BAR BRACKETS INTO POSITION AND INSTALL ALL FASTENERS AS SHOWN. RECEIVER SIDE BRACKETS GO BETWEEN FRAME RAILS AND STABILIZER BAR BRACKETS.

TIGHTEN ALL 1/2 GR5 FASTENERS TO 75 LB-FT.  
TIGHTEN ALL M8 CL9.8 FASTENERS TO 20 LB-FT.

APPROX WEIGHT: 37 LB. / 16.8 KG

NOTE: Check receiver frequently, making sure all fasteners are properly tightened. A receiver which has been damaged should be removed and replaced. Observe safety precautions when working beneath a vehicle and wear eye protection.

**WARNING:** DO NOT CUT ACCESS OR ATTACHMENT HOLES WITH A TORCH.  
DO NOT CUT, WELD, OR MODIFY RECEIVER.

Reese Products, INC.  
Elkhart, IN.  
Oakville, ONT. Canada