

# FRONT MOUNTED RECEIVER INSTALLATION INSTRUCTIONS

VEHICLE

RECEIVER NO.

FORD F-150 SERIES  
(WITH STABILIZER BAR)

13535

## EQUIPMENT REQUIRED:

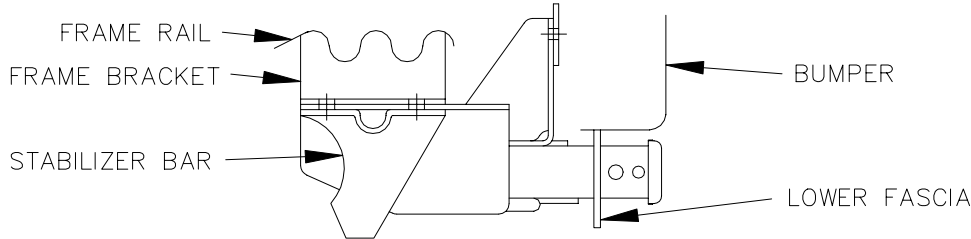
### DRILL BITS:

HITCH REQUIRES 5/8" PIN AND CLIP IF STABILIZING PIN IS NOT INSTALLED.

WRENCHES: (TIGHTEN ALL FASTENERS WITH TORQUE WRENCH) 13mm, 21mm, 11/16

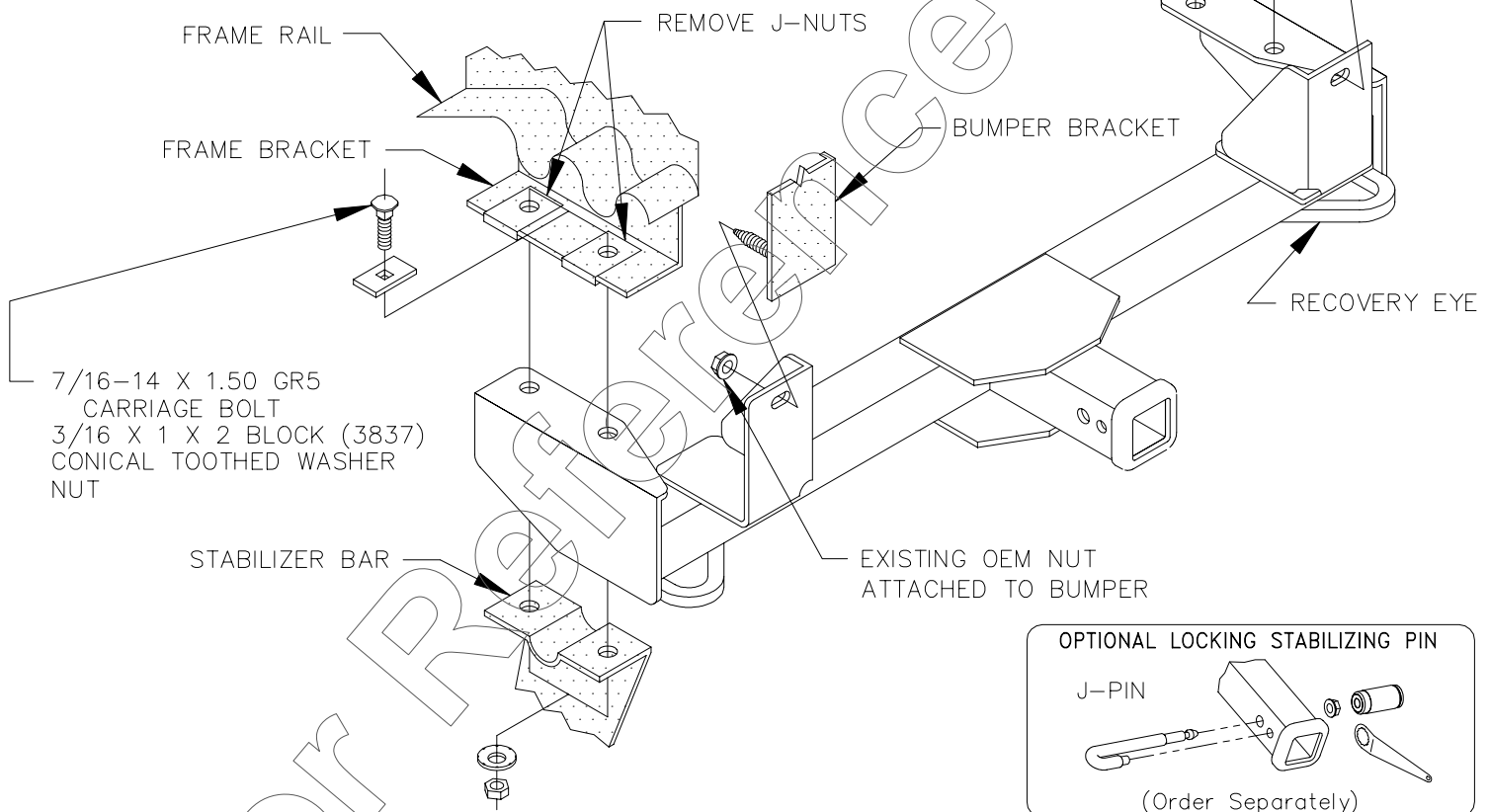
CARGO CAPACITY – DO NOT EXCEED  
500 LB. OR VEHICLE FRONT GROSS  
AXLE WEIGHT RATING. (GAWR)

9000 LB. MAX. WINCH LINE PULL



RECEIVER SHOWN IN PROPER POSITION

NOTE: ALL FASTENERS TYPICAL BOTH SIDES OF VEHICLE



1. IF PRESENT, REMOVE OR TRIM LOWER FASCIA. **CONSULT VEHICLE OWNER BEFORE TRIMMING.**
2. REMOVE TWO (2) BOLTS HOLDING STABILIZER BAR, EACH SIDE.
3. REMOVE J-NUTS FROM FRAME BRACKET, EACH SIDE.
4. REMOVE THE LOWER OEM NUT FROM THE BUMPER BRACKET, EACH SIDE.
5. RAISE RECEIVER INTO POSITION AND REINSTALL THE EXISTING OEM NUT AS SHOWN ABOVE.
6. RAISE STABILIZER BAR SO THAT RECEIVER IS BETWEEN STABILIZER AND FRAME BRACKET.
7. INSTALL REMAINING FASTENERS AS SHOWN ABOVE.

TIGHTEN ALL 7/16 GR5 FASTENERS TO 50 LB-FT.  
TIGHTEN ALL M12 CL8.8 FASTENERS TO 68 LB-FT.

APPROX WEIGHT: 47 LB. / 21.3 KG

NOTE: Check receiver frequently, making sure all fasteners are properly tightened. A receiver which has been damaged should be removed and replaced. Observe safety precautions when working beneath a vehicle and wear eye protection.

**WARNING:** DO NOT CUT ACCESS OR ATTACHMENT HOLES WITH A TORCH.  
DO NOT CUT, WELD, OR MODIFY RECEIVER.

Reese Products, INC.  
Elkhart, IN.  
Oakville, ONT. Canada