

16448

FORD SUPER DUTY 6 1/2' & 8' BOX

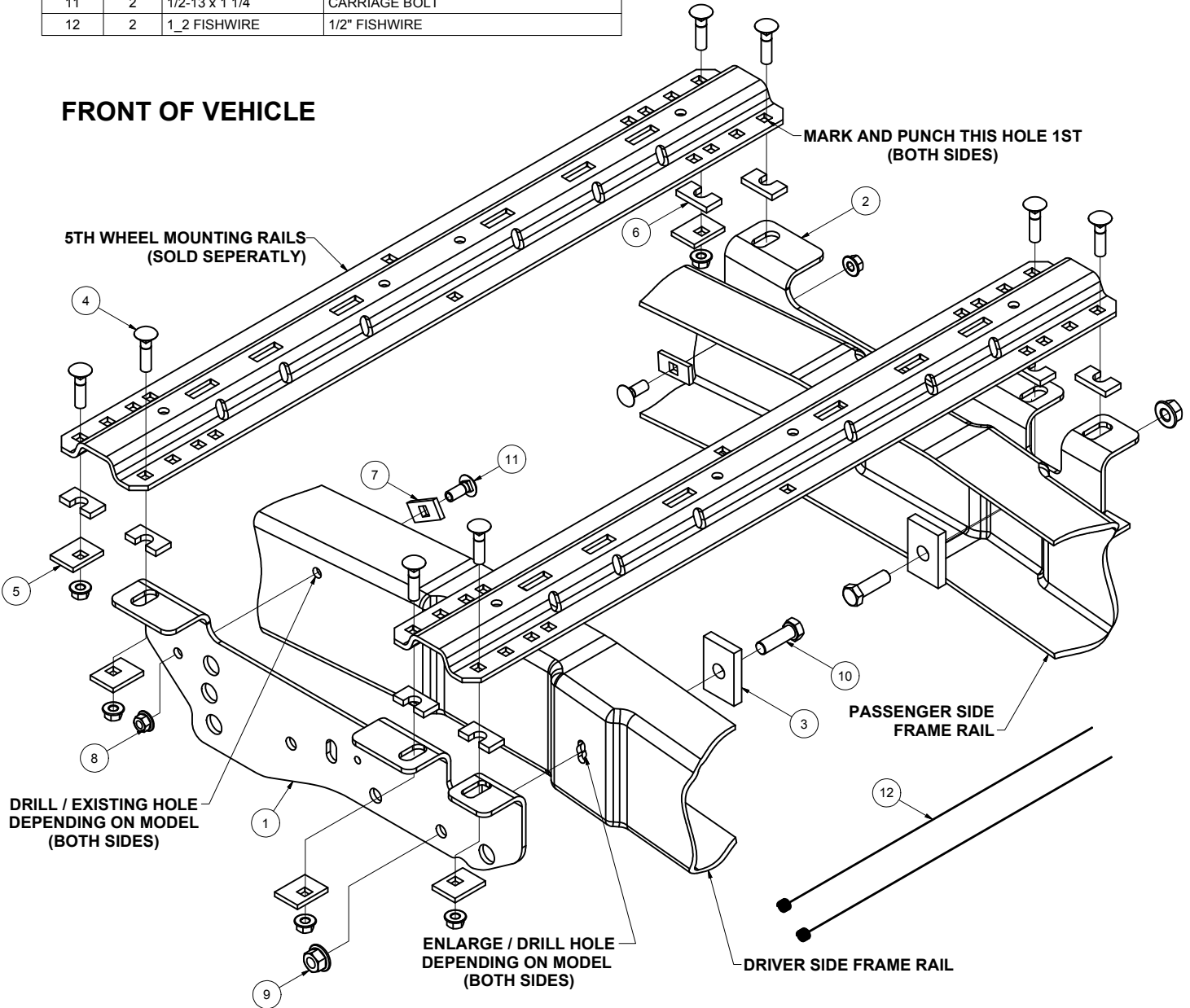
7/13/2012

\*\*\*DO NOT EXCEED VEHICLE MANUFACTURER'S RECOMMENDED TOWING CAPACITY.\*\*\*

Parts List			
ITEM	QTY	PART NUMBER	DESCRIPTION
1	1	CM-16448-DS	.250" DRIVER SIDE PLATE
2	1	CM-16448-PS	.250" PASSENGER SIDE PLATE
3	2	CM-16448-SP	.50 x 2.00" SPACER
4	8	1/2 - 13 x 2"	CARRIAGE BOLT
5	8	CM-SP33	.250 x 1.50 x 2.00" SQUARE HOLE SPACER
6	8	CM-SP136	.313" x 1.00 x 2.00" U-SHAPE SPACER
7	2	CM-SP12	.250 x 1.00 x 2.00" SQUARE HOLE SPACER
8	10	HFN 1213	HEX FLANGE NUT
9	2	5/8-11	HEX FLANGE NUT
10	2	5_8 - 11 x 2 HEX	HEX BOLT
11	2	1/2-13 x 1 1/4	CARRIAGE BOLT
12	2	1_2 FISHWIRE	1/2" FISHWIRE

DRILL APPLICATION : YES  
 APPROX. INSTALL TIME: 120 MIN.  
 OTHER NOTES:  
 LOWER SPARE TIRE, FISHWIRING REQUIRED, MAY  
 REQUIRE EMERGENCY BRAKE LINE CABLE  
 REMOVED TEMPORARILY

FRONT OF VEHICLE



REAR OF VEHICLE

Curt Manufacturing Inc., warrants this product to be free of defects in material and/or workmanship at the time of retail purchase by the original purchaser. If the product is found to be defective, Curt Manufacturing Inc., may repair or replace the product, at their option, when the product is returned, prepaid, with proof of purchase. Alteration to, misuse of, or improper installation of this product voids the warranty. Curt Manufacturing Inc.'s liability is limited to repair or replacement of products found to be defective, and specifically excludes liability for incidental or consequential loss or damage.

16448

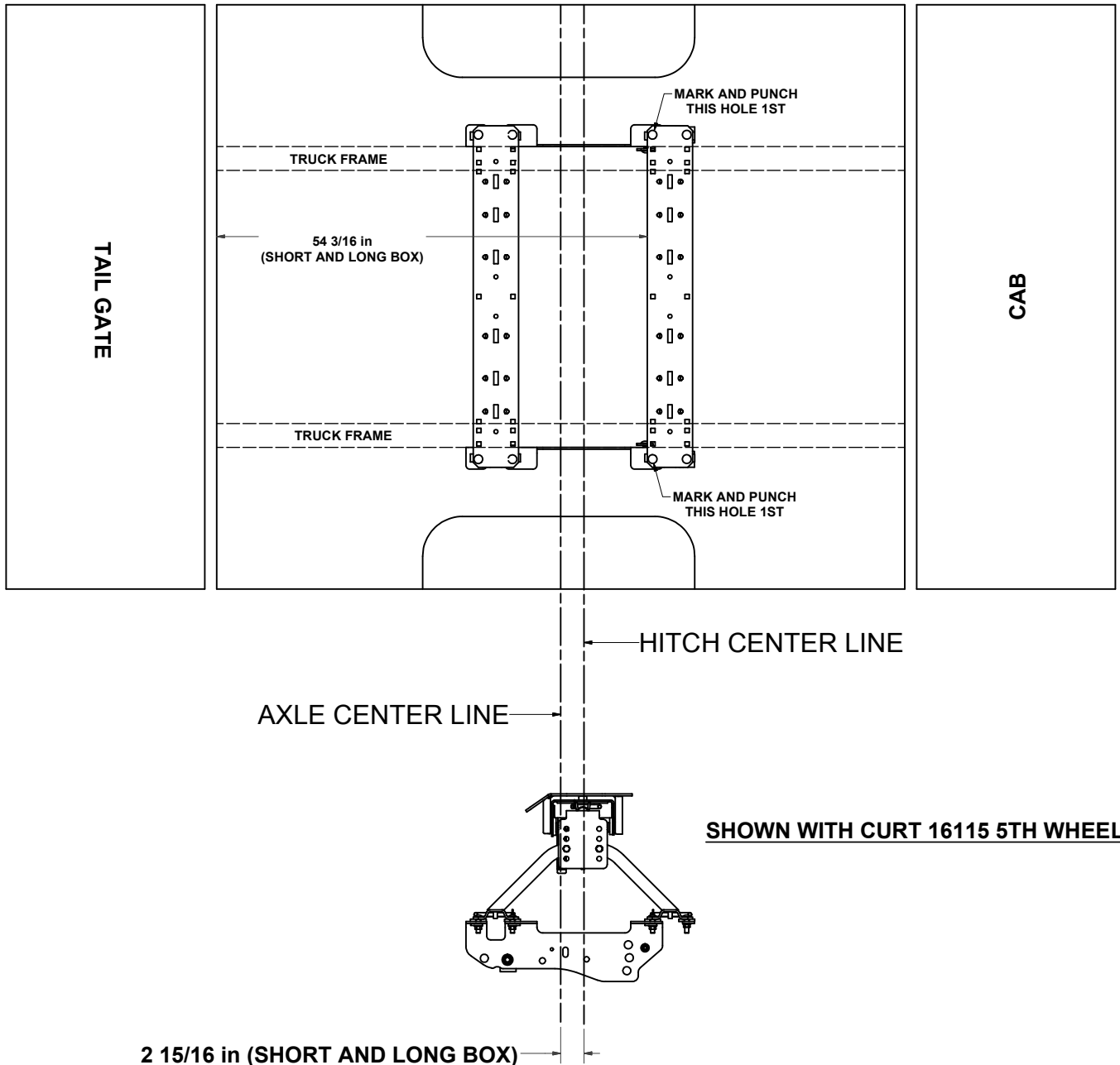
# FORD SUPER DUTY 6 1/2' & 8' BOX

7/13/2012

**\*\*\*DO NOT EXCEED VEHICLE MANUFACTURER'S RECOMMENDED TOWING CAPACITY.\*\*\***

## RAIL LOCATION DIAGRAM

**!!IMPORTANT!  
SYSTEM MAY NOT WORK WITH  
2003 AND EARLIER COMPETITOR  
PRODUCTS**



Curt Manufacturing Inc., warrants this product to be free of defects in material and/or workmanship at the time of retail purchase by the original purchaser. If the product is found to be defective, Curt Manufacturing Inc., may repair or replace the product, at their option, when the product is returned, prepaid, with proof of purchase. Alteration to, misuse of, or improper installation of this product voids the warranty. Curt Manufacturing Inc.'s liability is limited to repair or replacement of products found to be defective, and specifically excludes liability for incidental or consequential loss or damage.

16448

## FORD SUPER DUTY 6 1/2' & 8' BOX

7/13/2012

**\*\*\*DO NOT EXCEED VEHICLE MANUFACTURER'S RECOMMENDED TOWING CAPACITY.\*\*\***

**!WARNING!**

- Do not install mounting rails over plastic bed liners. Plastic bed liners must be cut out of the way to provide metal to metal contact. Base rails may be installed on spray in liners.
- Use only bolts, nuts, and washers supplied to install this kit. All bolts are grade 5 and nuts are grade 5 unless specified otherwise.
- These instructions are guidelines only, actual installation is the responsibility of the installer and the owner. Always measure truck and trailer before installing hitch to be sure that there is clearance at the cab and at the bumper to allow for turns.
- During installation, when drilling, protect the fuel tank and filler tubes, brake lines, and wire harness by placing a piece of metal between the box floor and potential components at risk on the driver side. This will prevent drilling into these items.

- 1) Lower and remove spare tire.
- 2) Place one mounting rail in the box of the truck, using your tape measure, center the rail between the weld seams on the length of the truck box floor and the proper distance from the rear edge of the truck box as shown on the "Rail Location Diagram"
- 3) Mark and center punch the holes as per the install diagram.
- 4) Temporarily position the side plate on the outside of the frame and check that the punches from step 4 align with the slots of the side plate. Remove the side plate from the vehicle and drill hole with a 1/8" drill bit.

**WARNING: When drilling holes be aware of potential risks to vehicle components and make appropriate safe guards to protect them from damage.**

- 5) Enlarge the 1/8" drilled holes to 9/16" with a step drill.
- 6) **Locate the driver side plate as follows:**
  - If brake cable interferes with driver side plate position it will need to be relocated onto driver side plate. Remove brake cable hanger from the frame of the truck and keep the hardware for reinstallation.
  - Mount the side plate to the vehicle by centering it over the box support with the two clearance holes located over the frame holes as shown.
  - Attach the side plate to the frame of the vehicle with the 5/8" hardware provided as shown and tighten snug to keep the side plate from moving.**Locate the passenger side plate as follows:**
  - Mount the side plate the vehicle by centering it over the box support with the clearance holes located over the shock tower rivets as shown.
  - Attach the side plate to the frame of the vehicle with the 5/8" hardware provided as shown and tighten snug to keep the side plate from moving.

NOTE: On some models, hole enlargement or drilling for the mounting hole for the 5/8" fasteners is required. Use the side plates as templates pushed against the bottom of the truck bed, mark and drill or enlarge holes to allow for bolts to pass through.

- 7) Reposition the mounting rail over the holes.
- 8) Install the 1/2" x 2" long carriage bolts with the u-shaped spacer to be located in the corrugation between the box and the side plates.

**NOTE: The U-shaped spacer will have to be installed before inserting the 1/2" carriage bolts through the mounting rail and box floor. This insures a metal to metal contact. Attach with spacers and flange nuts as shown and tighten snug to keep the mounting rail from moving.**

- 9) Place the unassembled 5th wheel / roller / gooseneck hitch into the already installed mounting rail. Position the second mounting rail with the 5th wheel / roller / gooseneck hitch by inserting the tabs into the mounting rail and pushing the mounting rail tight towards the other mounting rail. Ensure that the mounting rail is centered between the weld seams on the length of the truck box floor. This will position the mounting rail in the correct location and ensure that the 5th wheel will have a snug fit to the truck.

**NOTE: If more than one hitch product will be used with the rails then both should be used at the same time to align the second rail. This will ensure that one product does not compromise the fit of the other.**

- 10) Repeat steps 4, 5, 6, and 8
- 11) Tighten the 1/2" hardware.

- 12) **Install the driver side plate as follows:**
  - If hole is not present use the front mounting hole in the side plate as a guide and drill a 9/16" hole into the truck frame as shown.  
NOTE: Take precautions for any fuel lines, fuel tank, and electrical harnesses on the back side of the frame.
  - Slide the spacer over the coiled end of the fishwire and attach the fishwire to the 1/2" x 1 1/4" long carriage bolt.
  - With the other end of the fishwire, thread it through the back side of the frame and side plate.
  - Gently pull on the end of the fishwire to draw the bolt through the truck frame and then position the plate on the bolt.
  - Remove the bolt leader and install the 1/2" flange nut.

**Install the passenger side plate as follows:**

- Using the front mounting hole in the frame brackets as a guide drill a 9/16" hole into the truck frame as shown.  
NOTE: Take precautions for any fuel lines, fuel tank, and electrical harnesses on the back side of the frame.
- With the coiled end of the fishwire, thread it through the front side of the frame and out the gap at the top of the shock tower.
- Slide the spacer over the coiled end of the fishwire and attach to the 1/2" x 1 1/4" long carriage bolt.
- Push the hardware into the shock tower cavity through the gap at the top.
- With the other end of the fishwire, thread it through the back side of the side plate.
- Gently pull on the end of the bolt leader to draw the bolt through the truck frame and then position the bracket on the bolt.
- Remove the fishwire and install the 1/2" flange nut.

- 13) Torque all 1/2" fasteners to 110 lb-ft, and all 5/8" fasteners to 210 lb-ft. Torque the mounting rails to the side plates first then torque remaining fasteners.
- 14) Re-install spare tire.