

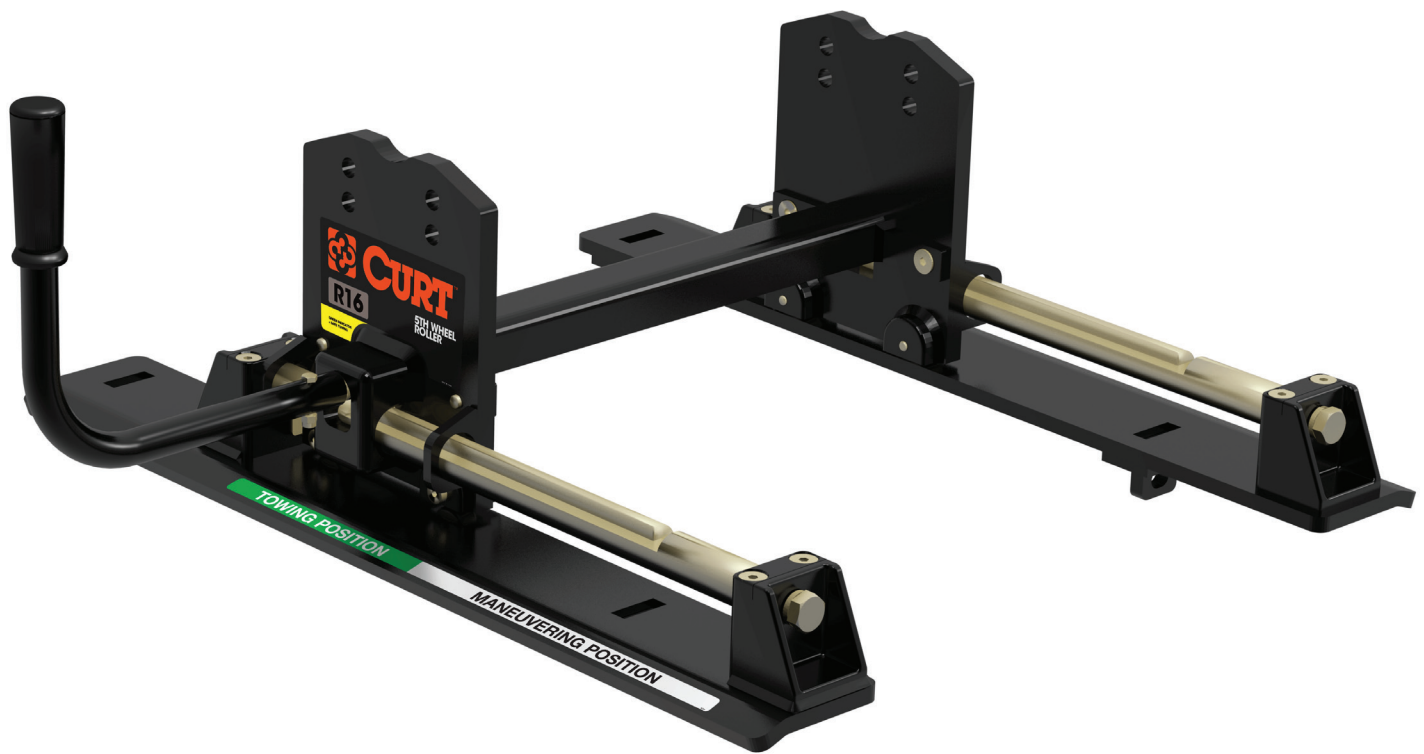


# CURT™

The FIRST Name  
in Towing Products™

# R16 ROLLER

## INSTRUCTION MANUAL - 16560



Installer: read and understand this manual. Fully instruct and demonstrate the operation of this 5th wheel hitch to the end user. Include the importance of observing all warnings contained herein, including warning labels on 5th wheel hitch mid section. Provide this manual in its entirety to the end-user.

**WARNING:** to avoid serious injury, do not expose hands, body parts, or clothing between the truck and trailer or the truck's bed sides and trailer. Extreme care should be observed to avoid serious injury to self, property, and observers.

**Never Position yourself or others under the trailer's kingpin area during coupling and uncoupling. Serious injury or death may result if the warning above is not observed.**

# 16560 R16 5th Wheel Roller

## Unpacking

### 1. Unpacking

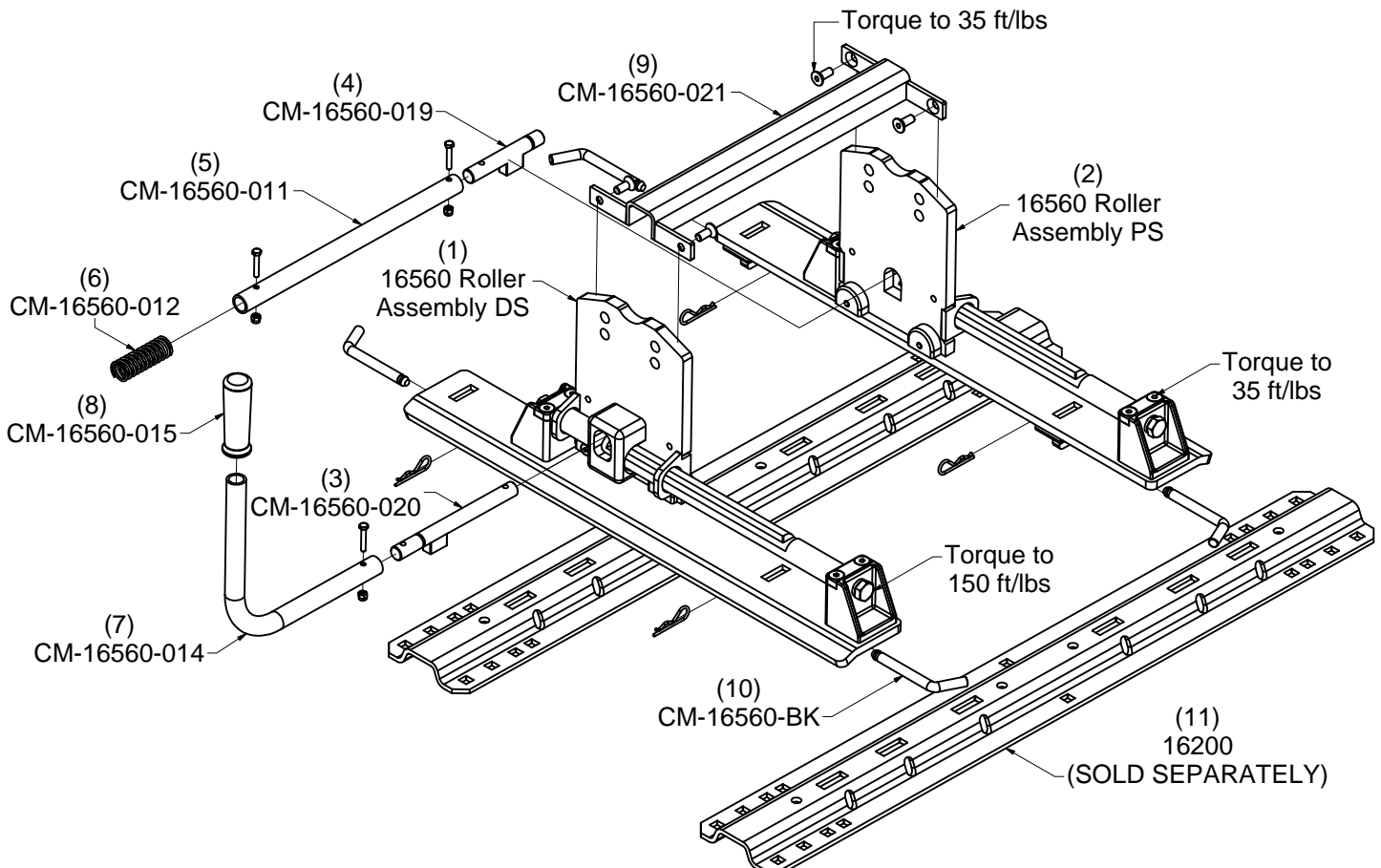
The R16 5th Wheel Roller ships in two boxes as indicated below. Inspect all parts for damage and verify that all items listed are present.

#### Box 1 Contains:

- (1) CM-16560-RA R16 Roller Assembly DS (Qty 1)
- (2) CM-16560-RA R16 Roller Assembly PS (Qty 1)
- (3) CM-16560-020 Lock Rod Weldment DS (Qty 1)
- (4) CM-16560-019 Lock Rod Weldment PS (Qty 1)
- (5) CM-16560-011 Outer Tube (Qty 1)
- (6) CM-16560-012 Compression Spring (Qty 1)
- (7) CM-16560-014 Handle (Qty 1)
- (8) CM-16560-015 Handle Grip (Qty 1)
- (9) CM-16560-021 Cross Member Weldment (Qty 1)
- (10) CM-16560-BK Bolt Kit (Qty 1)

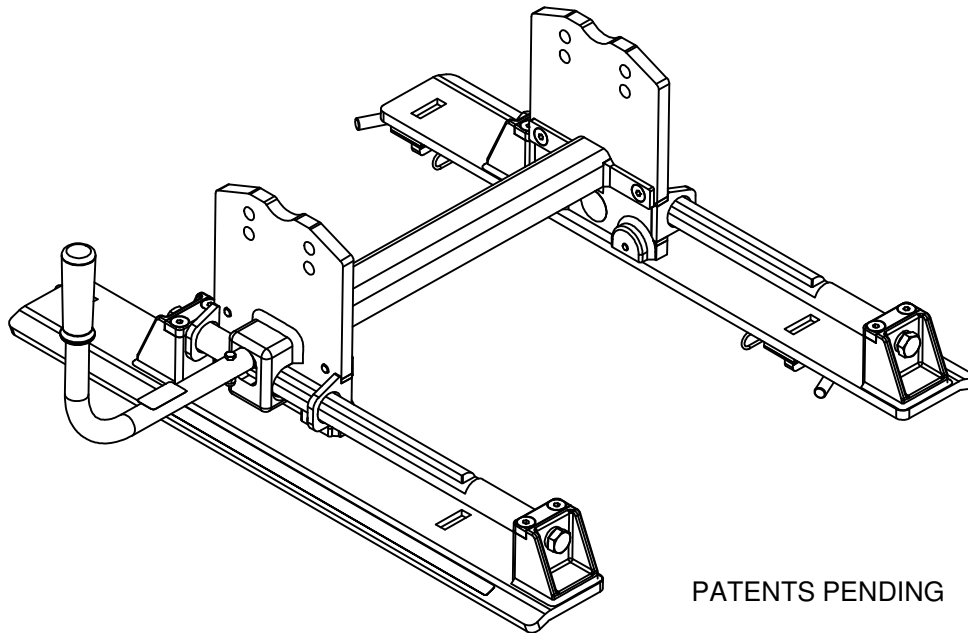
#### Box 2 Contains:

- (11) 16200 Mounting Rail Kit (Ordered Separately) (Qty 1)



**ILLUSTRATION 1**

# **16560 R16 5th Wheel Roller** **Installation Instructions**



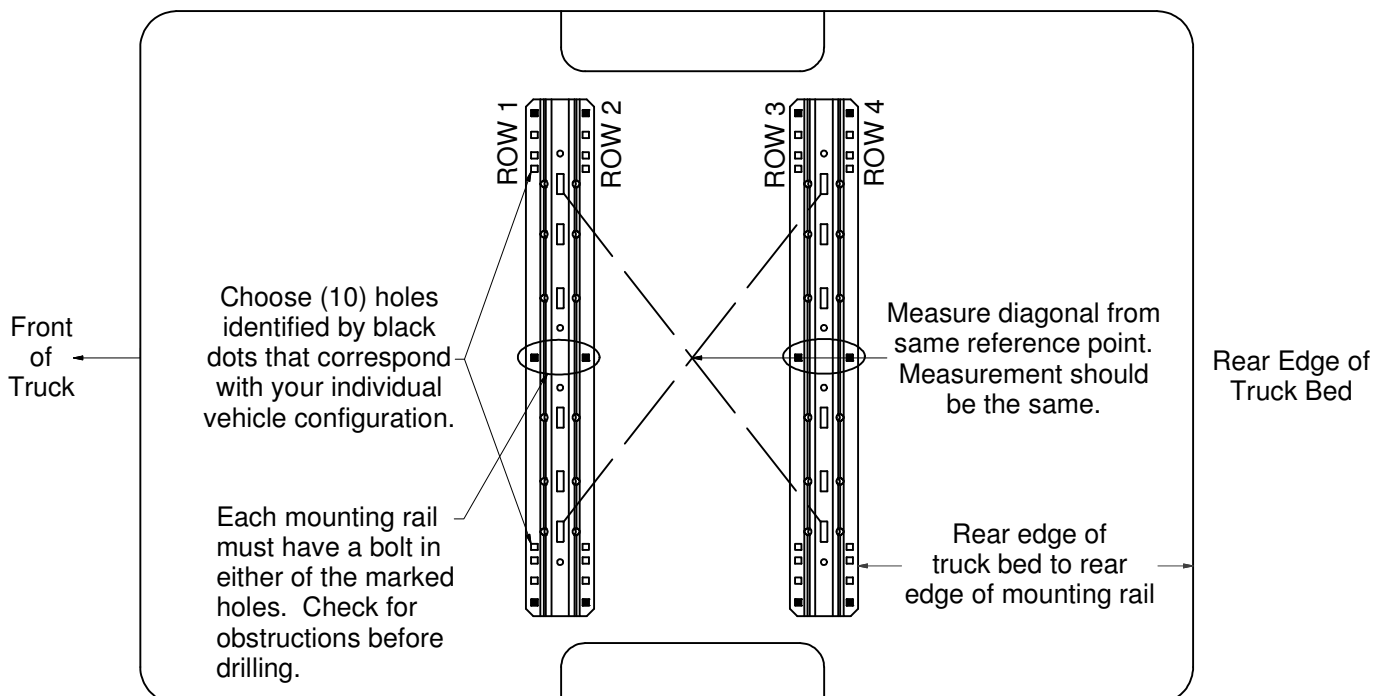
PATENTS PENDING

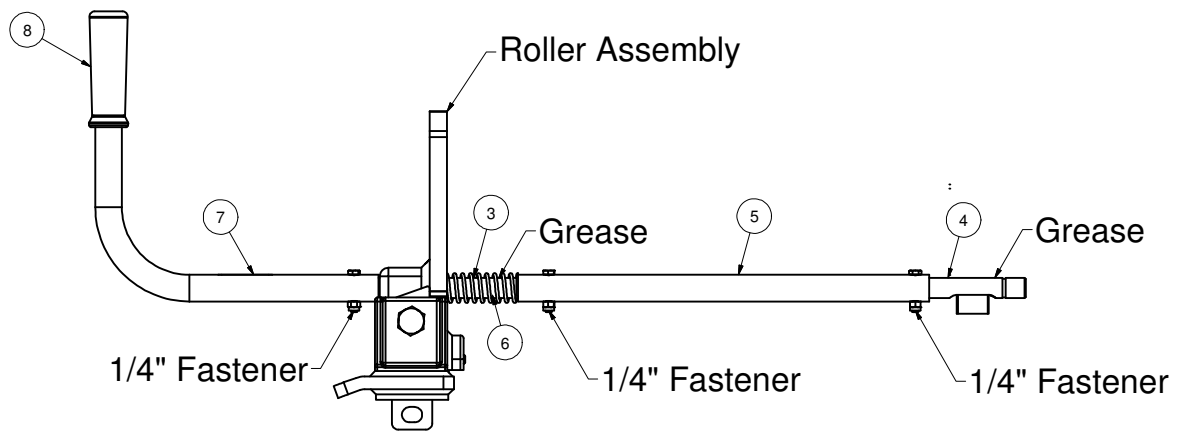
The **R16** roller is to be used with 5th wheel trailers which weigh up to 16,000 lbs. Never use on trailers exceeding 16,000 lbs.

**Caution:** The **R16** roller will reposition your 5th wheel hitch 12" rearward. HOWEVER this will **NOT** guarantee complete truck cab/trailer clearance when towing.

1. Before beginning assembly of the **R16** roller, check the base rails in your truck to be sure they are properly installed and are parallel with each other. The diagonal dimensions should be the same. See Illustration 2. With the base rails correctly positioned the assembled **R16** will drop into the slots on the top surface of the base rails.

**ILLUSTRATION 2**





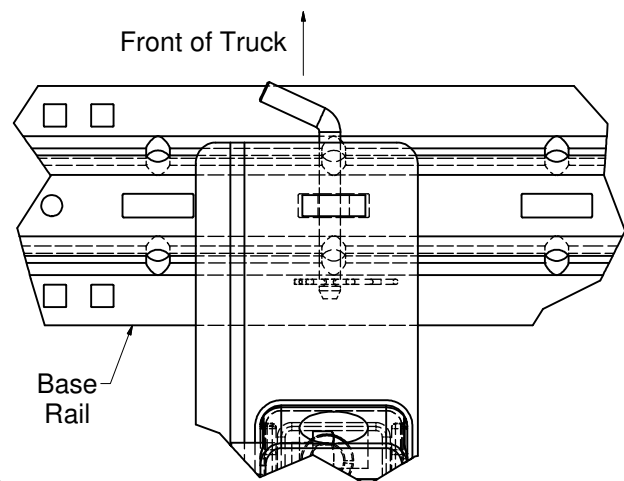
### ILLUSTRATION 3

2. Grease the ends of the Lock Rod Weldments (3) and (4) as shown in Illustration 3.
3. Slide Lock Rod Weldment (3) into the DS Roller Assembly and slide Lock Rod Weldment (4) into the PS Roller Assembly.
4. Slide the Outer Tube (5) over Lock Rod Weldment (4) until holes line up. Secure with 1/4" fastener. Tighten until nylock nuts are fully engaged.
5. Slide Compression Spring (6) over Lock Rod Weldment (3).
6. Slide Lock Rod Weldment (3) with Compression Spring (6) into Outer Tube (5) until the holes line up. Secure with 1/4" fastener. Tighten until nylock nuts are fully engaged.
7. Slide Handle (7) over Lock Rod Weldment (3) until the holes line up. Secure with 1/4" fastener. Tighten until nylock nuts are fully engaged.
8. Slide Cross Member Weldment (9) between Roller Assembly DS (1), Roller Assembly PS (2) and over the Lock Rod assembly as shown in Illustration 1. Secure with 3/8" flat head bolts and torque to 35 ft/lbs.
9. Place the assembled **R16** roller into the base rails and pin in place with the supplied hitch pins and clips.

#### **CAUTION**

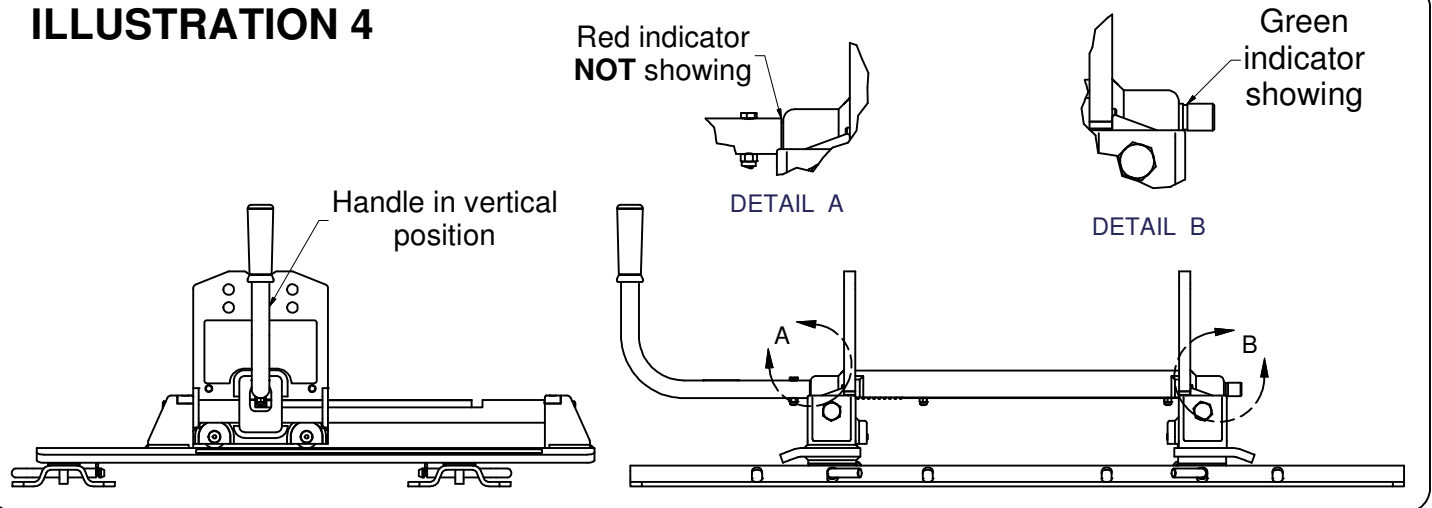
Be sure that all base rail hitch pins are positioned as shown in the illustration to the right and that all hitch pin clips are secured before towing.

#### **BASE RAIL HITCH PIN ILLUSTRATION**



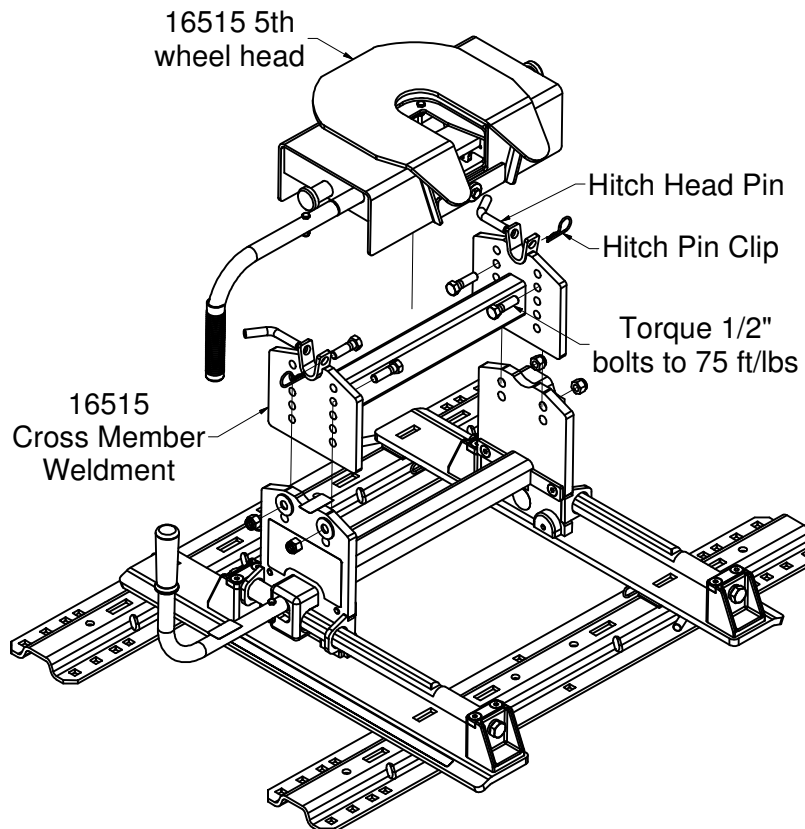
10. Pull handle out and rotate as shown on the operation decal on the roller. Roller should move smoothly fore and aft on the rails. **Note:** When the **R16** roller is locked in its fore and aft positions the lock bar handle should be vertical, the red indicator **WILL NOT** be showing and the green indicator **WILL** be showing. See Illustration 4.
11. If unit binds, make sure all bolts are torqued to proper specifications. Make sure the base rails are square and parallel.

## ILLUSTRATION 4



## Fifth Wheel Head Installation

1. To install the 16515 5th wheel head, slide the 16515 cross member weldment into the **R16** roller as shown. Select desired height using the adjustment holes in the cross member weldment. From the inside, insert four supplied 1/2" x 1 3/4" bolts into the four holes of the cross member weldment into the **R16** roller. Place 1/2" nylock nuts on each bolt. **Torque to 75 ft/lbs.** Place the 16515 5th wheel head into the cross member weldment saddle, insert supplied 3/8" hitch head pins and secure with hitch pin clips.
2. Your **R16** is now ready for operation. See **OPERATION INSTRUCTIONS**.



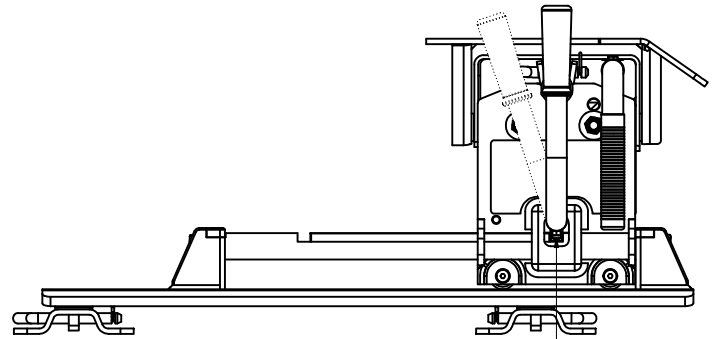
# OPERATION INSTRUCTIONS

## TO MANEUVER

1. Align trailer and tow vehicle in a straight line on a level surface.
2. Pull handle out and rotate counter clockwise to place lock bar in the ready to lock position.
3. Set trailer brakes and slowly drive the tow vehicle forward until **R16** roller stops. Locking bars will automatically engage in the Rear Locking Groove.
4. **NOTE: Visually check that lock bar handle is vertical and both lock bars are fully engaged and that the green indicator is visible.**

### MANEUVER POSITION

Roller and Hitch will move 12" REARWARD



MANEUVERING  
REAR LOCKING GROOVE

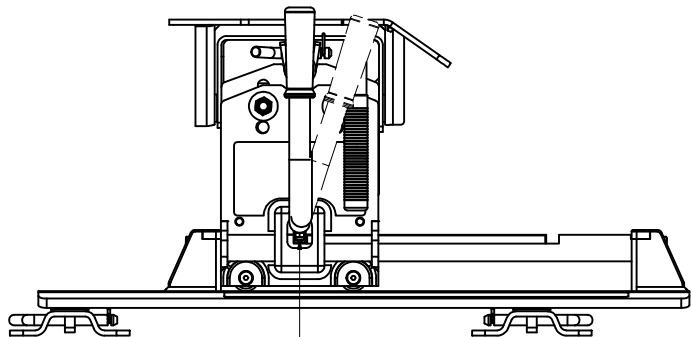
← Front of Tow Vehicle

## TO TOW

1. Align trailer and tow vehicle in a straight line on a level surface.
2. Pull handle out and rotate clockwise to place lock bar in the ready to lock position.
3. Set trailer brakes and slowly back up the tow vehicle until **R16** roller stops. Lock bars will automatically engage in the Forward Locking Groove.
4. **NOTE: Visually check that lock bar handle is vertical and both lock bars are fully engaged and that the green indicator is visible. Set trailer brakes and move the tow vehicle forward slightly to be sure both lock bars are fully engaged.**
5. You are now ready to tow.

### TOWING POSITION

Roller and Hitch will move 12" FORWARD



TOWING  
FRONT LOCKING GROOVE

← Front of Tow Vehicle

This product complies with **V-5** regulations and safety requirements for connecting devices and towing systems of the State of Wisconsin.

## **16515 / 16560 REMOVAL**

1. For removal of the **16515** fifth wheel head from the **16560 R16** Roller, reverse the steps found under the Fifth Wheel Head Installation on **page 5**. See Illustrations on **page 5**.
2. For removal of the **16560 R16** Roller, reverse steps 3-9 found under the **16560 R16** 5<sup>th</sup> Wheel Roller Installation Instructions on **page 4**. See Base Rail Hitch Pin Illustration & Illustration 3 found on **page 4**.

## **WARRANTY**

### **Limited 7 Year Warranty**

CURT Manufacturing LLC warrants, to the original purchaser, its products to be free from defect workmanship under normal use and service, ordinary wear and tear excepted for as long as product is owned by the original purchaser.

### **Limitations of the Warranty**

CURT Manufacturing LLC's obligation under this warranty is limited to repair or replacement, at its option. CURT Manufacturing LLC shall not be liable for the loss of or use of vehicles, cost of removal and /or installation, loss of time, inconvenience, rental of vehicles, loss or damage to personal property, expenses such as telephone, lodging, gasoline, towing, or any incidental or consequential damages. CURT Manufacturing LLC will examine the returned product. If the defect is covered under the warranty, CURT Manufacturing will repair the item or replace it at that time. Alterations or misuse of the items will not be covered under the warranty.

Some states do not allow the exclusion or limitation of incidental or consequential damages. So the above limitation or exclusion may not apply to you.

This warranty gives you specific legal rights and you may also have other rights, which vary, from state to state.

### **Obligations of Purchaser/Consumer**

The following steps need to be followed completely.

1. The purchaser/consumer must present proof of purchase of the defective CURT product to the headquarters of CURT Manufacturing LLC. Toll Free Number: 1-877-CURTMFG.
2. The purchaser/consumer must pay all handling charges and shipping charges incurred by the defective products to CURT Manufacturing LLC and for delivery of the replacement products by CURT Manufacturing LLC to the purchaser/consumer.

Curt Manufacturing, LLC.  
6208 Industrial Drive  
Eau Claire, WI 54701