

### Parts List

1	Driver / left running board
1	Passenger / right running board
2	Mounting bracket, front
2	Mounting bracket, rear
2	T-bolt, 37mm tab
2	T-bolt, 85mm tab
2	U-bolt, 8mm
4	Hex flange nut, 8mm
6	Flat washer, 8mm
2	Lock washer, 8mm
2	Hex nut, 8mm
4	Bolt retainer, plastic, 8mm
2	Flat washer, 12mm
2	Lock washer, 12mm
2	Hex nut, 12mm
2	Bolt retainer, plastic, 12mm

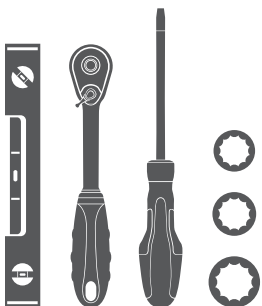
### Additional Hardware\*

12	Hex bolt, 8mm
12	Flat washer, 8mm
12	Lock washer, 8mm
12	Hex nut, 8mm

\* Running boards are supplied with additional hardware. Quantities listed are in addition to the standard supplied hardware.

### Tools Required

Ratchet	Socket, 12mm
Level	Socket, 13mm
Flathead screwdriver	Socket, 18mm



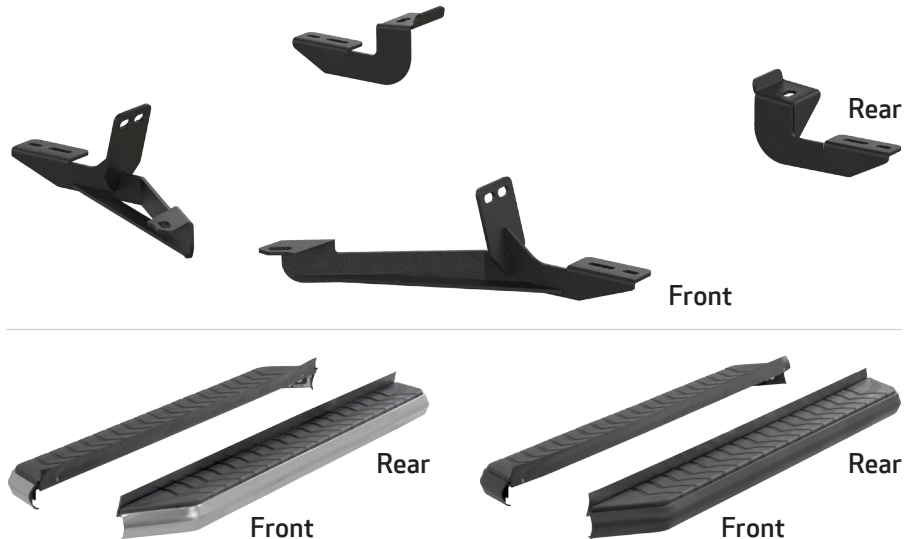
### Level of Difficulty

Easy



Scan for helpful install tips

### Product Image



### Notes and Maintenance

Before you begin installation, read all instructions thoroughly.

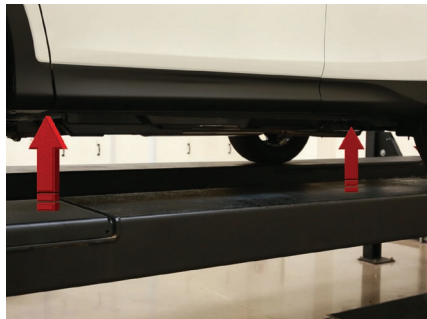
Proper tools will improve the quality of installation and reduce the time required.

For stainless steel, polish may be used to clear small scratches and scuffs on the finish. Mild soap may be used also to clean the product.

For black finishes, mild soap may be used to clean the product.

### Step 1

Starting on the driver side, locate the two mounting locations underneath the vehicle. Locate the front bracket for the driver side.



### Step 2

Insert a 37mm T-bolt plate into the opening. Slide a plastic bolt retainer over the thread of the bolt to hold the bolt in place.



### Step 3

Place the front driver-side bracket onto the vehicle to locate the remaining two mounting points.

Mark the two locations on the vehicle and remove the plugs to expose the mounting holes.

Note: The underbody sealer may need to be cut away to expose the mounting locations.



### Step 4

Insert a U-bolt into the side-by-side mounting holes. Slide a plastic bolt retainer over each end of the U-bolt to hold it in place.



### Step 5

Place the front driver-side bracket onto the vehicle and starting with the T-bolt mounting location, secure with an 8mm hex nut, 8mm lock washer and 8mm flat washer.

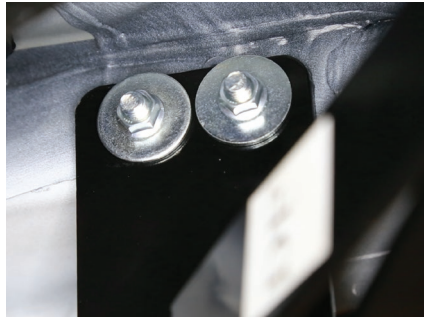
Snug the hardware, but do not fully tighten.



### Step 6

Finish securing the bracket with two 8mm hex nuts, two 8mm lock washers and two 8mm flat washers on the U-bolt.

Snug the hardware, but do not fully tighten.



### Step 7

Locate the hole plug on the rear driver side and remove it to clear the opening.

Insert an 85mm T-bolt plate into the opening. Slide a plastic bolt retainer over the thread of the bolt to hold the bolt in place.



### Step 8

Place the rear driver-side bracket onto the vehicle and secure with a 12mm hex nut, 12mm lock washer and 12mm flat washer.

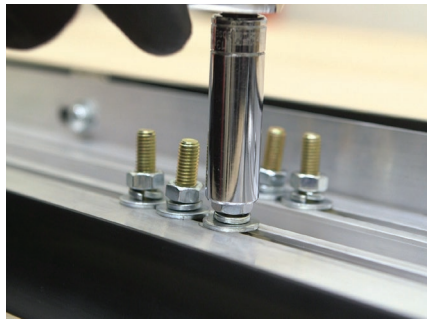
Snug the hardware, but do not fully tighten.



### Step 9

Remove the 8mm nuts, 8mm lock washers and 8mm flat washers from the running board.

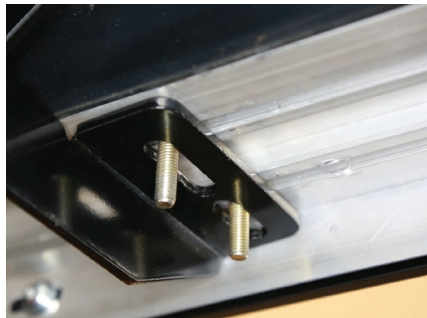
Place the running board onto the brackets and align the 8mm bolts with the slots in the brackets on the vehicle.



### Step 10

Attach the running board to the brackets using six 8mm bolts, lock washers, flat washers and nuts.

Snug the hardware, but do not fully tighten.



### Step 11

Adjust and level the running board, centering it between the front and rear wheel wells.

With the running board in position, it is recommended to tighten all brackets to the vehicle first, followed by the running board connections.



### Step 12

Repeat steps 1 through 11 on the passenger side of the vehicle.

Congratulations on the installation of your brand new ARIES AeroTread™ running boards.

With the running boards installed, periodic inspections should be performed to ensure all mounting hardware remains tight.

To protect your investment, see the 'Notes and Maintenance' section on the first page of this instruction manual.

