

Parts List

1	Driver / left, side bar / running board
1	Passenger / right, side bar / running board
4	VersaTrac™ mounting bracket, universal
8	Clip nut, M8*
16	Hex bolt, M8 - 1.25 x 25mm (B)
16	Lock washer, M8 (B)
16	Flat washer, M8 (B)
8	Hex nut, M8 (B)

(B) = Black hardware

* Depending on the year of the vehicle, clip nuts may or may not be needed.

Tools Required

Ratchet	Extension
Torque wrench	Socket, 13mm
Level	

Level of Difficulty

Easy



Scan for helpful install tips

Product Image



AdvantEDGE™



RidgeStep™



Torque Specifications

	METRIC	SAE
M6 bolt	3 ft.-lbs.	
M8 bolt	7 ft.-lbs.	
M10 bolt	16 ft.-lbs.	
M12 bolt	28 ft.-lbs.	
1/4" bolt		3 ft.-lbs.
5/16" bolt		7 ft.-lbs.
3/8" bolt		16 ft.-lbs.
7/16" bolt		20 ft.-lbs.
1/2" bolt		28 ft.-lbs.

Notes and Maintenance

Before you begin installation, read all instructions thoroughly.

Proper tools will improve the quality of installation and reduce the time required.

For chrome powder coat, polish may be used to clear small scratches and scuffs on the finish. Mild soap may be used also to clean the product.

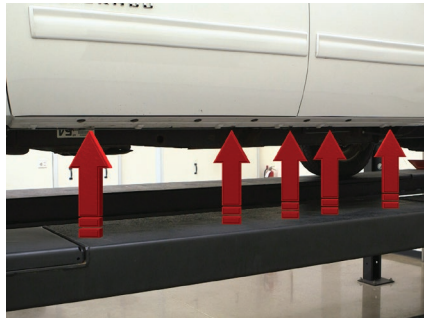
For black finishes, mild soap may be used to clean the product.

Refer to the table to the left when securing hardware during the installation process to help prevent damage to the product or vehicle.

Step 1

Starting on the driver side, locate the five mounting tabs along the bottom edge of the vehicle body.

This installation will use the first and fifth mounting tabs.



Step 2

Starting at the front driver side mounting location, locate the threaded hole on the inside of the body panel.

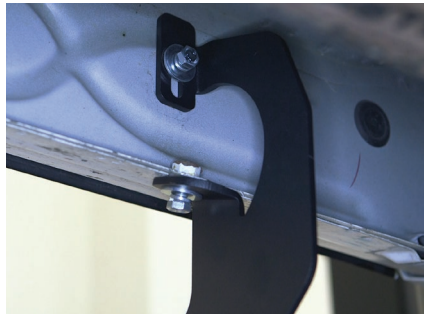
Attach the bracket to the body panel using an M8 hex bolt, lock washer and flat washer.

The bolt should only be finger tight to allow for adjustment later in the installation process.



Step 3

Secure the bracket with a second M8 hex bolt, lock washer and flat washer, using the factory threaded nut on the edge of the body panel.



Step 4

Locate the fifth tab location from step 1.

Insert a clip nut through the access hole and align it over the adjacent small hole and over the lower mounting tab.

Secure the bracket to the vehicle with an M8 hex bolt, lock washer and flat washer in each mounting location.



If installing RidgeStep™ running boards, skip to Step 6A

Step 5A - AdvantEDGE™ Side Bars

Carefully place the side bar onto the mounting brackets.

Ensure outer edge of the side bar is lined up with the outer edge of the mounting brackets.

Begin by locating the round rail slots closest to the front tire underneath the side bar.

Locate the round slots on the base of the side bar. Insert four M8 hex bolts into the rail slots, two by the front tire opening and two by the back tire opening.



Step 5B - AdvantEDGE™ Side Bars

Slide the bolts down the rail so that two bolts are positioned for each bracket.

Carefully lift the side bar up and move the bolts as necessary so they are in line with the slots on the mounting brackets.

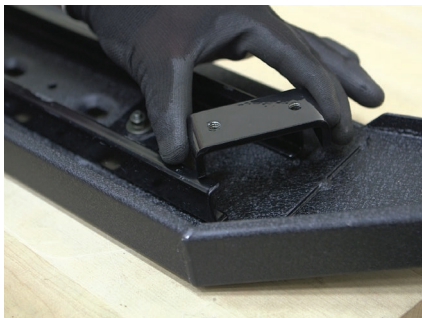
Secure the side bar to the brackets using flat washers, lock washers and M8 hex nuts.

Snug the hardware, but do not fully tighten. Continue to step 7.



Step 6A - RidgeStep™ Running Boards

Slide the three C-shaped track mounting brackets into the rail slot.



Step 6B - RidgeStep™ Running Boards

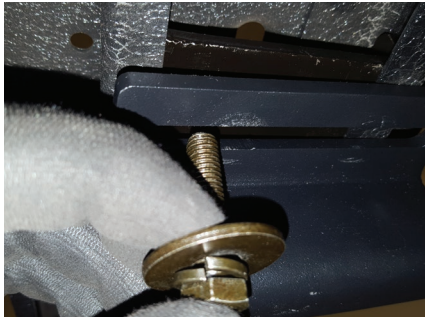
Carefully place the RidgeStep™ board onto the mounting brackets.

Align the C-shaped track mounting brackets with the mounting brackets on the vehicle.



Step 6C - RidgeStep™ Running Boards

Attach the C-shaped track mounting brackets to the mounting brackets using an M8 hex bolt, lock washer and flat washer.



Step 7

At this time, adjust the side bar / running board to the desired location.

With the side bar / running board in position, it is recommended to tighten all brackets to the vehicle first, followed by the side bar / running board connections.

For recommended torque specifications, refer to the table on page two.



Step 8

Repeat steps 1 through 7 on the passenger side of the vehicle.

Congratulations on the installation of your new ARIES AdvantEDGE™ side bars / RidgeStep™ running boards.

With the side bars / running boards installed, periodic inspections should be performed to ensure all mounting hardware remains tight.

To protect your investment, see the 'Notes and Maintenance' section on the second page of this instruction manual.

