

INSTALLATION INSTRUCTIONS

VEHICLE	HITCH NO.
JEEP RENEGADE WRANGLER	24557
JEEP YJ - CANADA	60859
JEEP WRANGLER	77003

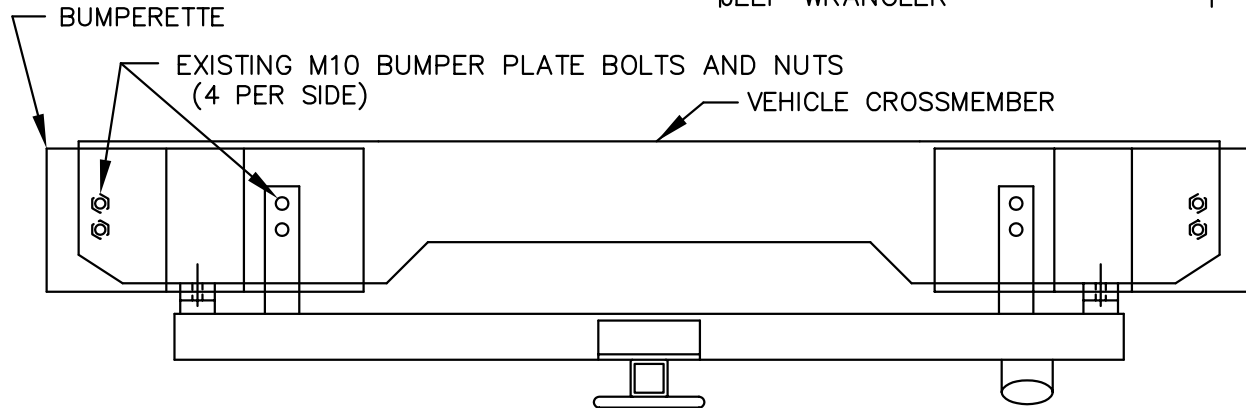


FIGURE 3. WRANGLER MODEL

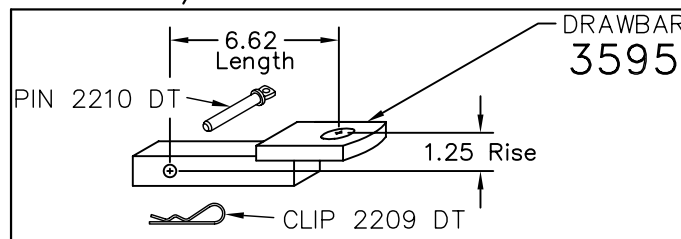
RENEGADE MODELS ONLY:

1. REMOVE FIVE (5) PLASTIC RETAINERS AND TWO (2) M6 BOLTS FROM BUMPER FASCIA. REMOVE FASCIA FROM BUMPER TO EXPOSE EIGHT (8) M10 MOUNTING NUTS.
2. REMOVE THE THREE (3) REAR M8 SPLASH GUARD MOUNTING BOLTS AND LOOSEN THE TWO (2) M8 SIDE BRACKET BOLTS SO THE SPLASH GUARD RESTS ON THE TAILPIPE.
3. REMOVE BUMPER PLATE ASSEMBLY FROM VEHICLE CROSSMEMBER BY REMOVING THE EIGHT (8) M10 NUTS.
4. WHILE BUMPER PLATE IS DETACHED, REMOVE THE THREE J-NUTS AND ELONGATE THE THREE EXPOSED MOUNTING HOLES DOWNWARD BY 1/4" USING 3/8 DRILL. REINSTALL J-NUTS OVER ELONGATED HOLES.
5. REMOVE THE FOUR (4) INNERMOST M10 BUMPER PLATE MOUNTING BOLTS FROM VEHICLE (TWO EACH SIDE).
6. REINSTALL BUMPER PLATE ASSEMBLY ONTO FOUR (4) REMAINING EXISTING BOLTS. LOOSELY SECURE WITH EXISTING M10 NUTS.
7. LIFT HITCH INTO PLACE AND INSTALL 3/8 FASTENERS IN HITCH UPRIGHTS AS SHOWN. USE 3/8 DRILL TO PROVIDE CLEARANCE IN VEHICLE HOLES, IF NECESSARY. ATTACH 3/8 FLAT WASHER TO HANDLE NUT WITH TAPE FOR EASIER INSTALLATION.
8. INSTALL 7/16 FASTENERS AS SHOWN IN FIG 1A.
9. TIGHTEN HITCH AND BUMPER FASTENERS.
10. ROTATE SPLASH GUARD BACK INTO POSITION, REINSTALL THREE (3) EXISTING M8 BOLTS, AND TIGHTEN THE TWO (2) SIDE BRACKET BOLTS.
11. REPLACE BUMPER FASCIA, TRIMMING FOR CLEARANCE. REINSTALL FASCIA FASTENERS.

WRANGLER MODELS ONLY

1. REMOVE INBOARD M10 BUMPERETTE BOLTS AND NUTS (TWO EACH SIDE) FROM VEHICLE CROSSMEMBER.
2. SLIDE HITCH UPRIGHT OVER OUTSIDE OF BUMPERETTE MOUNTING SURFACE; EACH SIDE. FASTEN AS SHOWN WITH 3/8 FASTENERS. ATTACH 3/8 FLAT WASHER TO HANDLE NUT WITH TAPE FOR EASIER INSTALLATION.
3. INSTALL 7/16 FASTENERS AS SHOWN IN FIGURE 1B.

TIGHTEN 3/8 GR5 FASTENERS TO 31 LB.-FT.
TIGHTEN 7/16 GR5 FASTENERS TO 50 LB.-FT.



USE ONLY THE DRAWBAR SHOWN FOR CORRECT BUMPER CLEARANCE AND HEIGHT.
DRAWBAR MUST BE USED IN THE RISE POSITION ONLY.

THIS PRODUCT COMPLIES WITH SAFETY SPECIFICATIONS AND REQUIREMENTS FOR CONNECTING DEVICES AND TOWING SYSTEMS OF THE STATE OF NEW YORK AND V.E.S.C. REGULATION V-5.

APPROX WEIGHT (LB.)	FASTENER KIT
24.5	01130-786

NOTE: Check hitch frequently, making sure all fasteners and ball are properly tightened. If hitch is removed, plug all holes in trunk pan or other body panels to prevent entry of water and exhaust fumes. A hitch or ball which has been damaged should be removed and replaced. Observe safety precautions when working beneath a vehicle and wear eye protection. Follow car maker's specs for maximum trailer weight and tongue weight. Do not cut access or attachment holes with a torch.

TOWING PRODUCTS
Plymouth, Michigan

INSTALLATION INSTRUCTIONS

EQUIPMENT REQUIRED: UTILITY KNIFE
 WIRING ACCESS LOCATION: SUV5, SUV7
 DRILL BITS: 3/8
 HITCH REQUIRES 1/2" PIN AND CLIP

WRENCHES: (TIGHTEN ALL FASTENERS WITH TORQUE WRENCH) 10mm, 13mm, 17mm, 9/16, 5/8

VEHICLE	HITCH NO.
JEEP RENEGADE WRANGLER	24557
JEEP YJ - CANADA	60859
JEEP WRANGLER	77003

2000 LB MAX GROSS TRAILER WT
 200 LB MAX TONGUE WEIGHT
 DO NOT EXCEED TOWING VEHICLE RATINGS

FASCIA TRIMMING REQUIRED, OBTAIN VEHICLE OWNER APPROVAL BEFORE CUTTING.

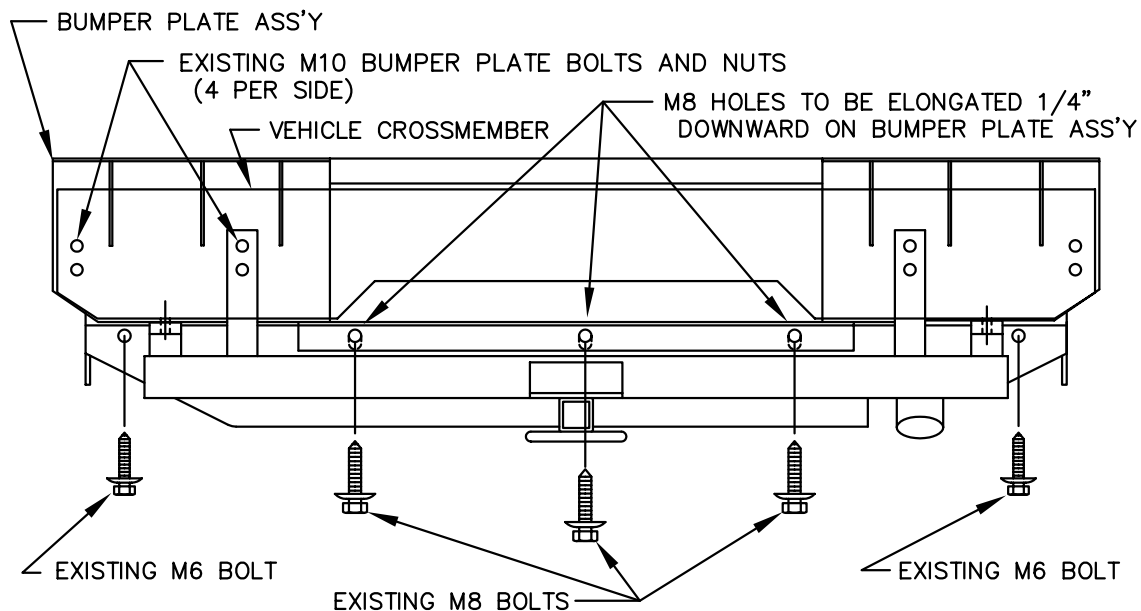
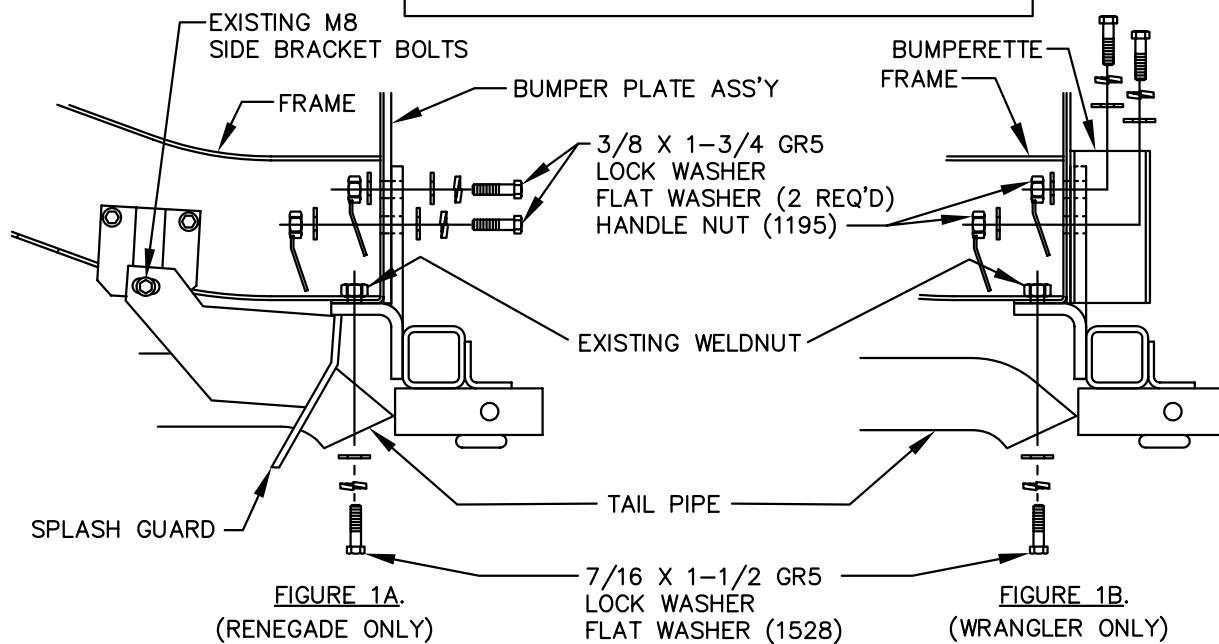


FIGURE 2. RENEGADE MODEL SHOWN WITH FASCIA REMOVED

THIS PRODUCT COMPLIES WITH SAFETY SPECIFICATIONS AND REQUIREMENTS FOR CONNECTING DEVICES AND TOWING SYSTEMS OF THE STATE OF NEW YORK AND V.E.S.C. REGULATION V-5.

APPROX WEIGHT (LB.)	FASTENER KIT
24.5	01130-786

NOTE: Check hitch frequently, making sure all fasteners and ball are properly tightened. If hitch is removed, plug all holes in trunk pan or other body panels to prevent entry of water and exhaust fumes. A hitch or ball which has been damaged should be removed and replaced. Observe safety precautions when working beneath a vehicle and wear eye protection. Follow car maker's specs for maximum trailer weight and tongue weight. Do not cut access or attachment holes with a torch.

TOWING PRODUCTS
 Plymouth, Michigan