

INSTALLATION INSTRUCTIONS

EQUIPMENT REQUIRED: UTILITY KNIFE, PHILLIPS HEAD SCREWDRIVER

DRILL BITS: 1/2

WRENCHES: (TIGHTEN ALL FASTENERS WITH TORQUE WRENCH) 10mm, 12mm, 13mm, 11/16, 7/8

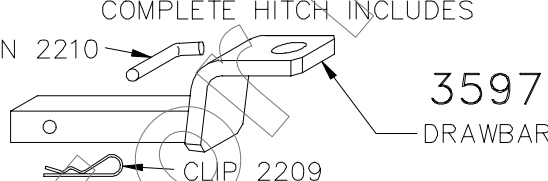
VEHICLE	HITCH NO.
MITSUBISHI ECLIPSE (2WD ONLY) EAGLE TALON (2WD ONLY)	24565

2000 LB MAX GROSS TRAILER WT
200 LB MAX TONGUE WEIGHT
DO NOT EXCEED TOWING VEHICLE RATINGS

FASCIA TRIMMING REQUIRED OBTAIN
VEHICLE OWNER APPROVAL BEFORE CUTTING

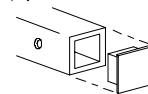
- SLIDE THREE REARMOST RUBBER EXHAUST HANGERS OFF OF VEHICLE EXHAUST HANGER HOOKS. LEAVE RUBBER HANGERS ATTACHED TO EXHAUST SYSTEM.
SUGGESTION: SPRAY RUBBER HANGERS WITH SILICON-TYPE LUBRICANT FOR EASIER REMOVAL AND REPLACEMENT.
- REMOVE TWO EXHAUST SHIELD BOLTS NEAR THE CENTER REAR OF THE VEHICLE AND DISCARD.
- MITSUBISHI ECLIPSE: REMOVE THREE CENTERMOST FASCIA TO IMPACT BAR ATTACHING SCREWS.
EAGLE TALON: REMOVE FASCIA REINFORCEMENT AND TRIM 1-1/4 OUT OF THE CENTER. SEE FIGURE 4.
- POSITION HITCH ON VEHICLE AS SHOWN IN FIGURE 1, PLACING HITCH BARS BETWEEN FASCIA AND IMPACT BAR.
- INSTALL ENERGY ABSORBING (E/A) UNIT BRACKETS (4222), 7/16" CARRIAGE BOLTS, CONICAL TOOTHED WASHERS AND NUTS AS SHOWN IN FIGURE 2.
- INSTALL M8 HEX BOLTS, LOCK WASHERS AND FLAT WASHERS INTO THE EXISTING WELD NUTS FOR THE EXHAUST SHIELD, MAKING SURE THE EXHAUST SHIELD IS BETWEEN THE HITCH AND THE TRUNK PAN.
- MITSUBISHI ECLIPSE: TRIM FASCIA AS NEEDED TO ACCESS HITCH BARS. SEE FIGURE 3.
NOTE: DO NOT SANDWICH FASCIA BETWEEN IMPACT BARS AND HITCH BARS. HITCH MUST MAKE METAL TO METAL CONTACT WITH IMPACT BAR.
- USING HITCH AS A TEMPLATE, DRILL 1/2" HOLES THROUGH IMPACT BAR ALSO THROUGH SIDE ARM INTO THE FRAME.
- FISHWIRE 7/16" CARRIAGE BOLT AND 7/16 WASHER (1204) THROUGH EXISTING LARGE HOLE DOWN THROUGH FRAME AND SIDE ARM. INSTALL FLAT WASHER, LOCK WASHER AND NUT AS SHOWN IN FIGURE 1.
- INSTALL 1/2" CARRIAGE BOLTS, BLOCKS (1277), BLOCKS (1097-006), FLAT WASHERS, LOCK WASHERS AND NUTS AS SHOWN IN FIGURE 1. BLOCK (1097-006) MUST BE PLACED BETWEEN HITCH BAR AND IMPACT BAR AS SHOWN.
NOTE: ON SOME MODELS, REMOVAL OF BACKUP LIGHTS WILL ALLOW EASIER CARRIAGE BOLT AND BLOCK PLACEMENT.
- EAGLE TALON: TRIM FASCIA AS NEEDED FOR DRAWBAR APPLICATION, ABOUT A 1-1/4 X 2 RECTANGLE. SEE FIGURE 4.
- REATTACH FASCIA MOUNTING SCREWS AND RUBBER EXHAUST HANGERS.

TIGHTEN M8 CL10,9 FASTENERS TO 20 LB.-FT.
TIGHTEN 7/16" GR5 FASTENERS TO 50 LB.-FT.
TIGHTEN 1/2" GR5 FASTENERS TO 75 LB.-FT.

 <p>COMPLETE HITCH INCLUDES</p> <p>PIN 2210</p> <p>CLIP 2209</p> <p>3597 DRAWBAR</p>	<p>DRAWBAR REPLACEMENT KIT (INCLUDES PIN & CLIP)</p> <p>3592</p> <p>NOTE: REPLACEMENT DRAWBAR AVAILABLE ONLY IN KIT. PINS & CLIPS AVAILABLE SEPARATELY.</p>
-------------------------------------------------------------------------------------------------------------------------------------------------------------------------	--------------------------------------------------------------------------------------------------------------------------------------------------------------------------------

USE ONLY THE DRAWBAR SHOWN FOR CORRECT BUMPER CLEARANCE AND HEIGHT.
DRAWBAR MUST BE USED IN THE RISE POSITION ONLY.

REMOVE DRAWBAR WHEN NOT TOWING
TO PROTECT DRAWBAR OPENING IN HITCH WHEN NOT TOWING,
INSERT COVER #2211 (PURCHASED SEPARATELY).



THIS PRODUCT COMPLIES WITH SAFETY SPECIFICATIONS AND REQUIREMENTS FOR CONNECTING DEVICES AND TOWING SYSTEMS OF THE STATE OF NEW YORK AND V.E.S.C. REGULATION V-5.



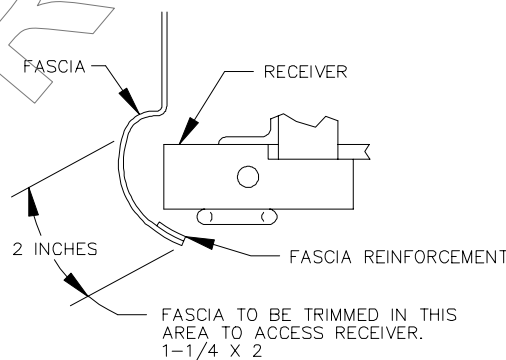
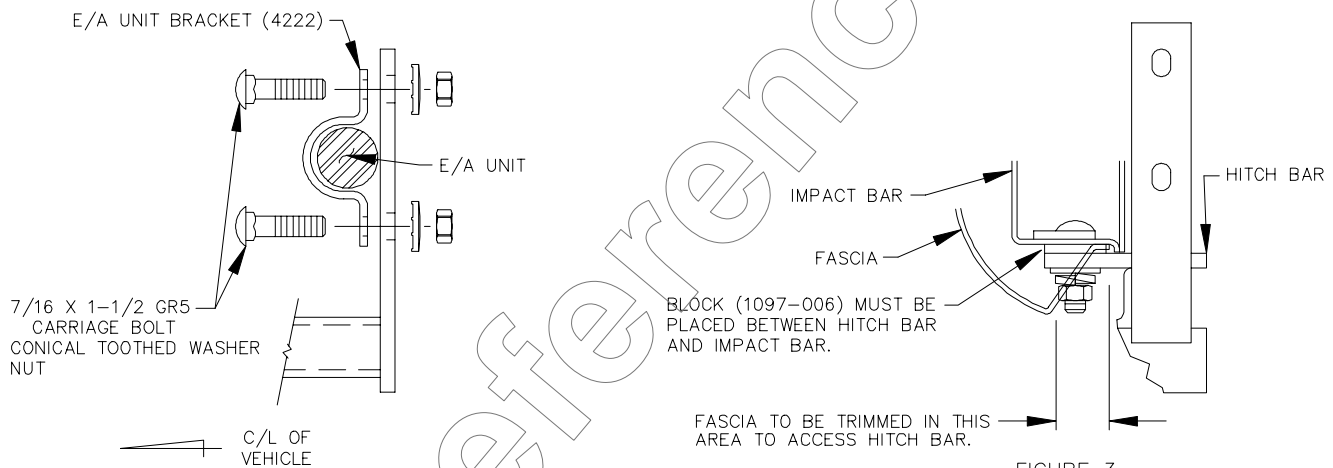
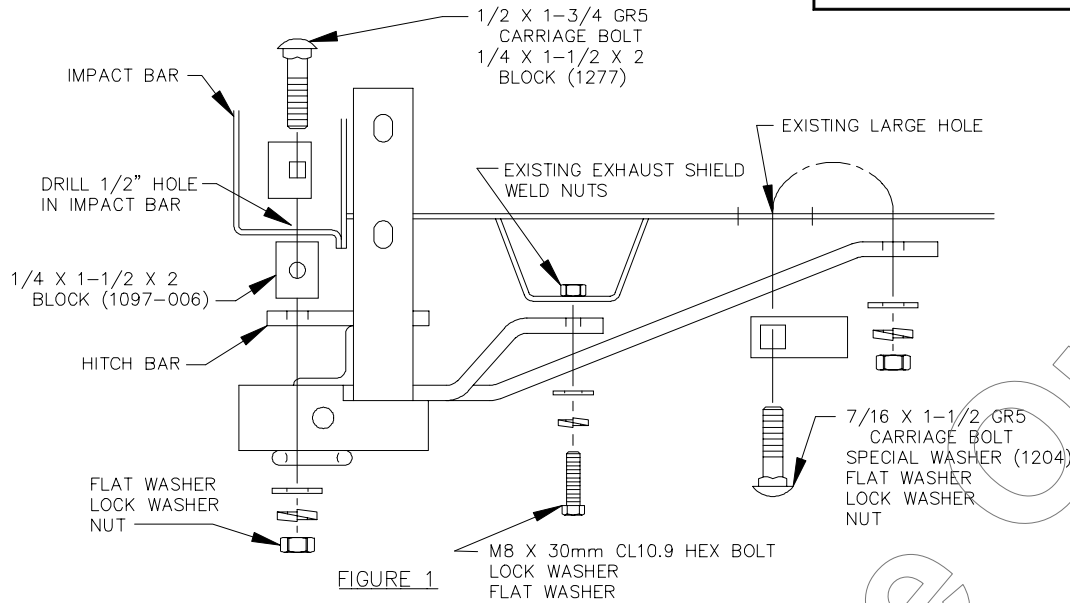
Draw-Tite, Inc.
40500 Van Born Road
Canton, Michigan 48188

APPROX WEIGHT (LB.)	25	FASTENER KIT NO.	1130-812
---------------------	----	------------------	----------

NOTE: Check hitch frequently, making sure all fasteners and ball are properly tightened. If hitch is removed, plug all holes in trunk pan or other body panels to prevent entry of water and exhaust fumes. A hitch or ball which has been damaged should be removed and replaced. Observe safety precautions when working beneath a vehicle and wear eye protection. Follow car maker's specs for maximum trailer weight and tongue weight. Do not cut access or attachment holes with a torch.

INSTALLATION INSTRUCTIONS

FASCIA TRIMMING REQUIRED OBTAIN VEHICLE OWNER APPROVAL BEFORE CUTTING



THIS PRODUCT COMPLIES WITH SAFETY SPECIFICATIONS AND REQUIREMENTS FOR CONNECTING DEVICES AND TOWING SYSTEMS OF THE STATE OF NEW YORK AND V.E.S.C. REGULATION V-5.

APPROX WEIGHT (LB.)

FASTENER KIT NO.


Draw-Tite, Inc.

 40500 Van Born Road
Canton, Michigan 48188

NOTE: Check hitch frequently, making sure all fasteners and ball are properly tightened. If hitch is removed, plug all holes in trunk pan or other body panels to prevent entry of water and exhaust fumes. A hitch or ball which has been damaged should be removed and replaced. Observe safety precautions when working beneath a vehicle and wear eye protection. Follow car maker's specs for maximum trailer weight and tongue weight. Do not cut access or attachment holes with a torch.