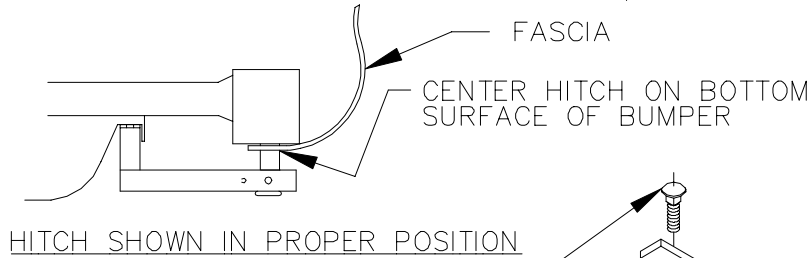


SPORTFRAME®**INSTALLATION INSTRUCTIONS**

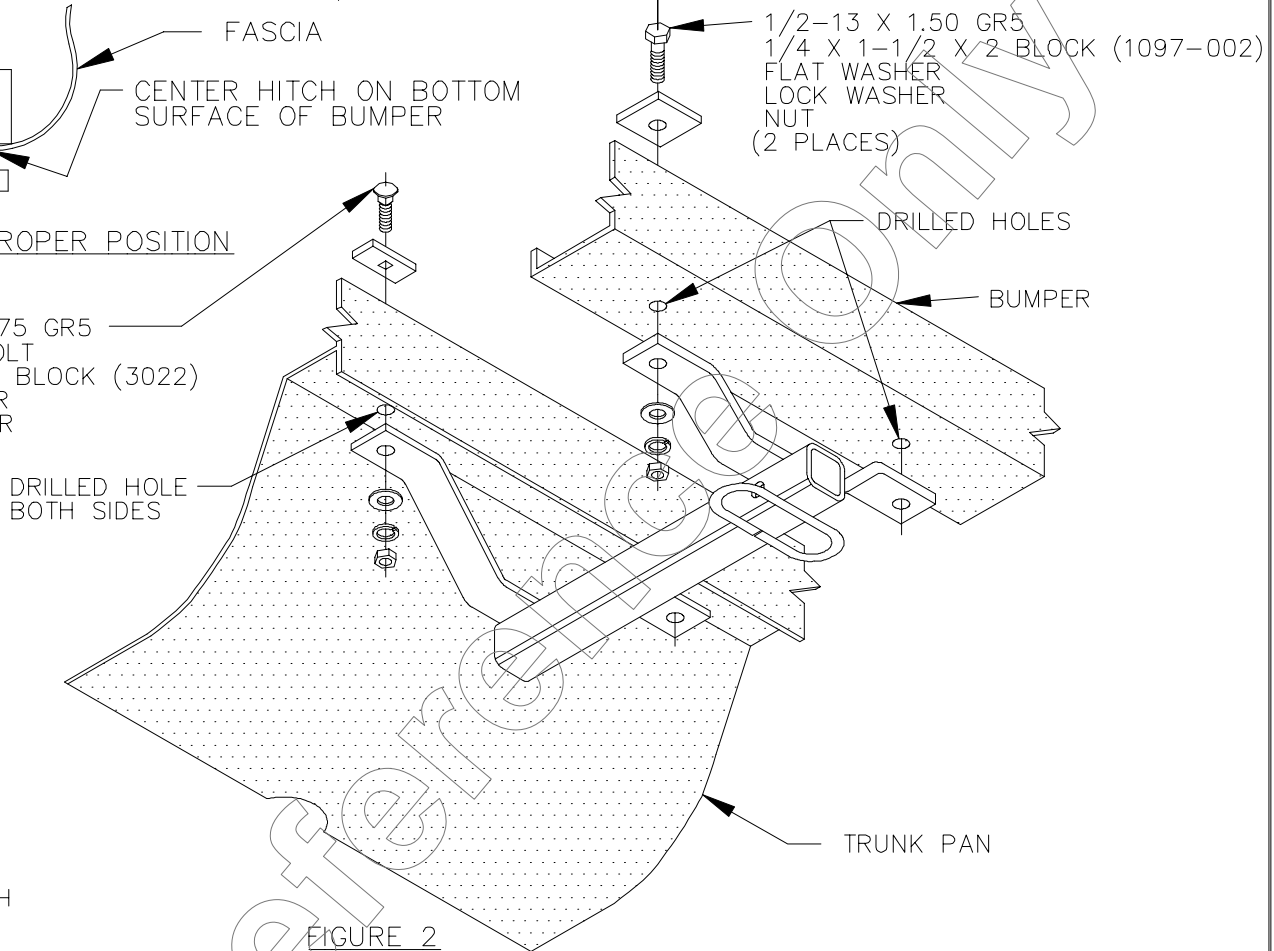
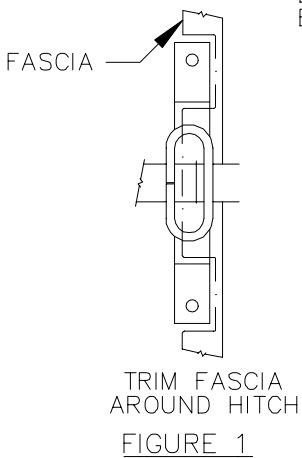
EQUIPMENT REQUIRED: KNIFE
 WIRING ACCESS LOCATION: PC3, PC4
 DRILL BITS: 1/2"

WRENCHES: (TIGHTEN ALL FASTENERS WITH TORQUE WRENCH) 7/8"

2000 LB MAX GROSS TRAILER WT
 200 LB MAX TONGUE WEIGHT
 DO NOT EXCEED TOWING VEHICLE RATINGS



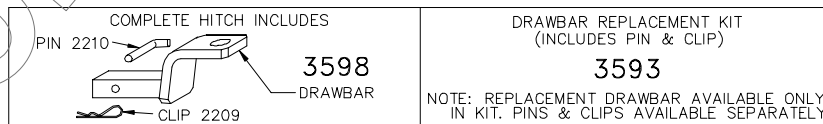
1/2-13 X 1.75 GR5
 CARRIAGE BOLT
 1/4 X 1 X 3 BLOCK (3022)
 FLAT WASHER
 LOCK WASHER
 NUT
 (2 PLACES)



1. RAISE HITCH INTO POSITION CENTERED ON VEHICLE.
2. WITH HITCH IN POSITION, MARK LOCATION OF HOLES ON VEHICLES BUMPER AND TRUNK PAN.
3. REMOVE SPARE TIRE COVER AND CARPETING BEFORE DRILLING HOLES IN TRUNK PAN.
4. DRILL 1/2" HOLES IN VEHICLE BUMPER AND TRUNK PAN AT LOCATIONS MARKED IN STEP 2.
5. RAISE HITCH BACK INTO POSITION AND TRIM FASCIA AS SHOWN IN FIGURE 1.
6. INSTALL FASTENERS AS SHOWN IN FIGURE 2 AND REPLACE SPARE TIRE COVER.

NOTE: SEAL HOLES IN TRUNK PAN TO PREVENT ENTRY OF EXHAUST FUMES OR WATER.

TIGHTEN ALL 1/2 GR5 FASTENERS TO 75 LB.-FT.



USE ONLY THE DRAWBAR SHOWN FOR CORRECT BUMPER CLEARANCE AND HEIGHT.
 DRAWBAR MUST BE USED IN THE RISE POSITION ONLY.

REMOVE DRAWBAR WHEN NOT TOWING
 TO PROTECT DRAWBAR OPENING IN HITCH WHEN NOT TOWING,
 INSERT COVER #2211 (PURCHASED SEPARATELY).

THIS PRODUCT COMPLIES WITH SAFETY SPECIFICATIONS AND REQUIREMENTS FOR CONNECTING DEVICES AND TOWING SYSTEMS OF THE STATE OF NEW YORK AND V.E.S.C. REGULATION V-5.

APPROX WEIGHT (LB.)	10	FASTENER KIT NO.	K24626
---------------------	----	------------------	--------

NOTE: Check hitch frequently, making sure all fasteners and ball are properly tightened. If hitch is removed, plug all holes in trunk pan or other body panels to prevent entry of water and exhaust fumes. A hitch or ball which has been damaged should be removed and replaced. Observe safety precautions when working beneath a vehicle and wear eye protection. Follow car maker's specs for maximum trailer weight and tongue weight. Do not cut access or attachment holes with a torch.

DRAW-TITE®
 Canton, Michigan