

INSTALLATION INSTRUCTIONS

EQUIPMENT REQUIRED: TIN SNIPS, PLIERS

WIRING ACCESS LOCATION: PC1 & PC2

DRILL BITS: 9/16"

HITCH REQUIRES 1/2" PIN AND CLIP

WRENCHES: (TIGHTEN ALL FASTENERS WITH TORQUE WRENCH) 9/16, 11/16, 13/16

VEHICLE

FORD ESCORT-ALL MODELS
MERCURY TRACER-ALL MODELS2000 LB MAX GROSS TRAILER WT
200 LB MAX TONGUE WEIGHT
DO NOT EXCEED TOWING VEHICLE RATINGS

1. SLIDE THREE (3) REARMOST RUBBER EXHAUST HANGERS OFF OF EXHAUST HANGER HOOKS. LEAVE RUBBER HANGERS ATTACHED TO EXHAUST SYSTEM.

SUGGESTION: SPRAY RUBBER HANGERS WITH SILICONE-TYPE LUBRICANT FOR EASIER REMOVAL AND REPLACEMENT.

2. WITH TIN SNIPS, TRIM SHEET METAL PANEL AT TOW HOOKS AS SHOWN IN FIGURE 1 AND BEND UP TO CLEAR SIDE BRACKETS.

NOTE: ON STATION WAGON MODELS IT MAY BE NECESSARY TO BEND REMAINING SHEET METAL PANEL SLIGHTLY FORWARD TO ALLOW CLEARANCE FOR CROSSTUBE.

3. POSITION HITCH ON VEHICLE AS SHOWN IN FIGURE 2 (SEE NOTE), USING HITCH AS A TEMPLATE, MARK LOCATIONS FOR HOLES TO BE DRILLED INTO VEHICLE FRAME [TWO (2) HOLES PER SIDE] FOR U-BOLTS.

NOTE: DRIVER'S SIDE BRACKET IS POSITIONED INBOARD OF TOW HOOK, PASSENGER'S SIDE BRACKET IS POSITIONED OUTBOARD OF TOW HOOK.

SUGGESTION: WHEN HITCH IS POSITIONED IN PLACE INSERT 9/16" X 2.00 GR5 BOLTS THROUGH TOW HOOKS TO INSURE CORRECT LOCATION OF HITCH; REMOVE BOLTS WHEN HOLES ARE MARKED.

4. LOWER HITCH AND DRILL 9/16" HOLES (MARKED IN STEP 3) INTO FRAME. INSTALL U-BOLTS AS SHOWN IN FIGURE 3.

NOTE: ON SOME MODELS, IT MAY BE NECESSARY TO BEND DOWN LIP OF HOLE TO PROVIDE CLEARANCE FOR U-BOLT.

5. POSITION HITCH ON VEHICLE BEING CAREFUL NOT TO PUSH U-BOLTS BACK INTO THE FRAME. LOOSELY INSTALL FLAT WASHERS, CONICAL TOOTHED WASHERS AND NUTS ONTO U-BOLTS AS SHOWN.

SUGGESTION: BEFORE REPOSITIONING HITCH ONTO VEHICLE WITH U-BOLTS IN PLACE, ATTACH FISHWIRE AS SHOWN IN FIGURE 3 TO PREVENT U-BOLTS FROM BEING PUSHED INTO FRAME.

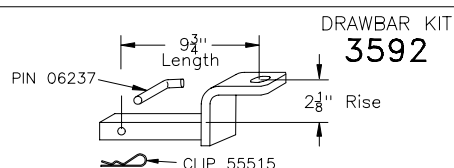
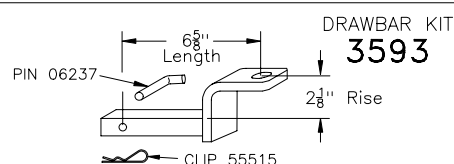
6. INSTALL 9/16" X 2.00 GR5 BOLTS, 1/4 X 1-1/2 X 2 BLOCKS, LOCK WASHERS, AND NUTS THROUGH SIDE BRACKETS AND TOW HOOKS AS SHOWN IN FIGURE 2.

7. TIGHTEN 3/8 GR5 FASTENERS TO 31 LB.-FT.
TIGHTEN 9/16 GR5 FASTENERS TO 110 LB.-FT.

8. REPLACE THREE (3) RUBBER EXHAUST HANGERS REMOVED IN STEP 1.

NOTE: ON SOME MODELS WITH CHROME TWIN TIP PIPES, IT MAY BE NECESSARY TO ALLOW MORE CLEARANCE BETWEEN EXHAUST PIPES AND CROSSTUBE. BEND EXHAUST SYSTEM HANGER HOOKS UP TO PROVIDE CLEARANCE, AS SHOWN IN FIGURE 4.

STANDARD DRAWBAR

OPTIONAL DRAWBAR (SOLD SEPERATELY)
FOR 97 & LATER ESCORT/TRACER SEDANS ONLYUSE ONLY THE DRAWBAR SHOWN FOR CORRECT BUMPER CLEARANCE AND HEIGHT.
DRAWBAR MUST BE USED IN THE RISE POSITION ONLY.

THIS PRODUCT COMPLIES WITH SAFETY SPECIFICATIONS AND REQUIREMENTS FOR CONNECTING DEVICES AND TOWING SYSTEMS OF THE STATE OF NEW YORK AND V.E.S.C. REGULATION V-5.

APPROX WEIGHT (LB.)

19.2

FASTENER KIT

01130-753

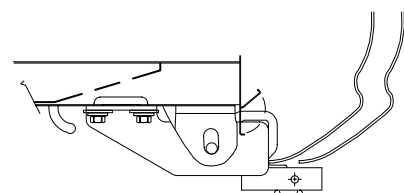
NOTE: Check hitch frequently, making sure all fasteners and ball are properly tightened. If hitch is removed, plug all holes in trunk pan or other body panels to prevent entry of water and exhaust fumes. A hitch or ball which has been damaged should be removed and replaced. Observe safety precautions when working beneath vehicle and wear eye protection. Follow car maker's specs for maximum trailer weight and tongue weight. Do not cut access or attachment holes with a torch.

TOWING PRODUCTS
Plymouth, Michigan

INSTALLATION INSTRUCTIONS

VEHICLE

FORD ESCORT-ALL MODELS
MERCURY TRACER-ALL MODELS



HITCH SHOWN IN PROPER POSITION

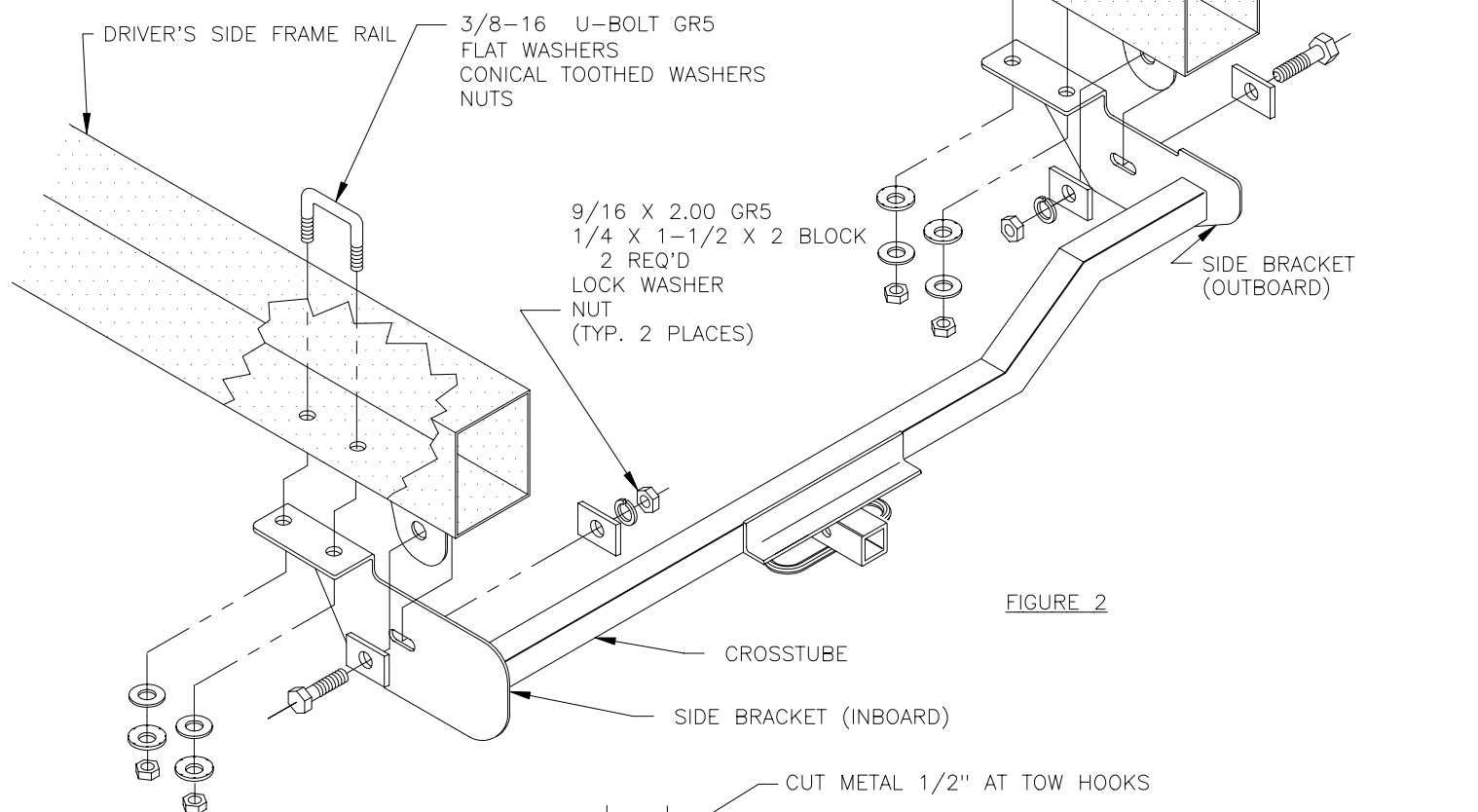


FIGURE 2

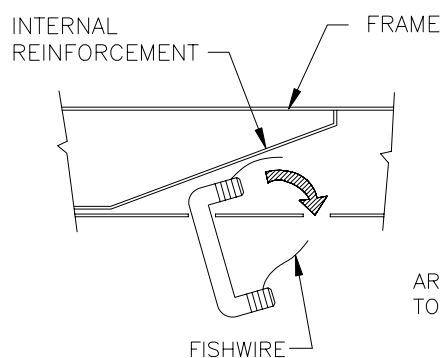


FIGURE 3
U-BOLT INSTALLATION

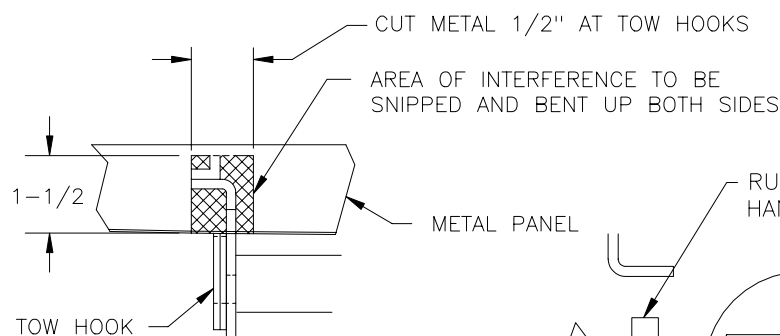


FIGURE 1
AREA TO BE SNIPPED & BENT UP EACH SIDE
TO ALLOW CLEARANCE FOR SIDE BRACKETS

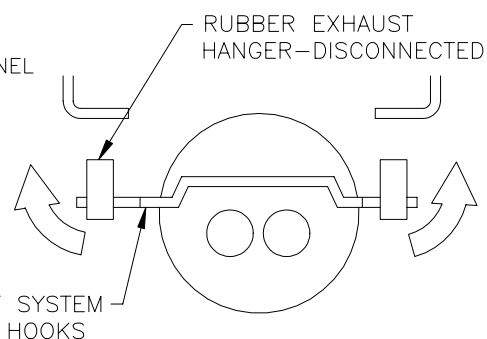


FIGURE 4
BEND EXHAUST SYSTEM HANGER HOOKS UP ON
BOTH ENDS TO LOWER EXHAUST PIPES

THIS PRODUCT COMPLIES WITH SAFETY SPECIFICATIONS AND REQUIREMENTS FOR CONNECTING DEVICES AND TOWING SYSTEMS OF THE STATE OF NEW YORK AND V.E.S.C. REGULATION V-5.

APPROX WEIGHT (LB.)

NOTE: Check hitch frequently, making sure all fasteners and ball are properly tightened. If hitch is removed, plug all holes in trunk pan or other body panels to prevent entry of water and exhaust fumes. A hitch or ball which has been damaged should be removed and replaced. Observe safety precautions when working beneath a vehicle and wear eye protection. Follow car maker's specs for maximum trailer weight and tongue weight. Do not cut access or attachment holes with a torch.

TOWING PRODUCTS
Plymouth, Michigan