

INSTALLATION INSTRUCTIONS

VEHICLE

HONDA PRELUDE

EQUIPMENT REQUIRED:

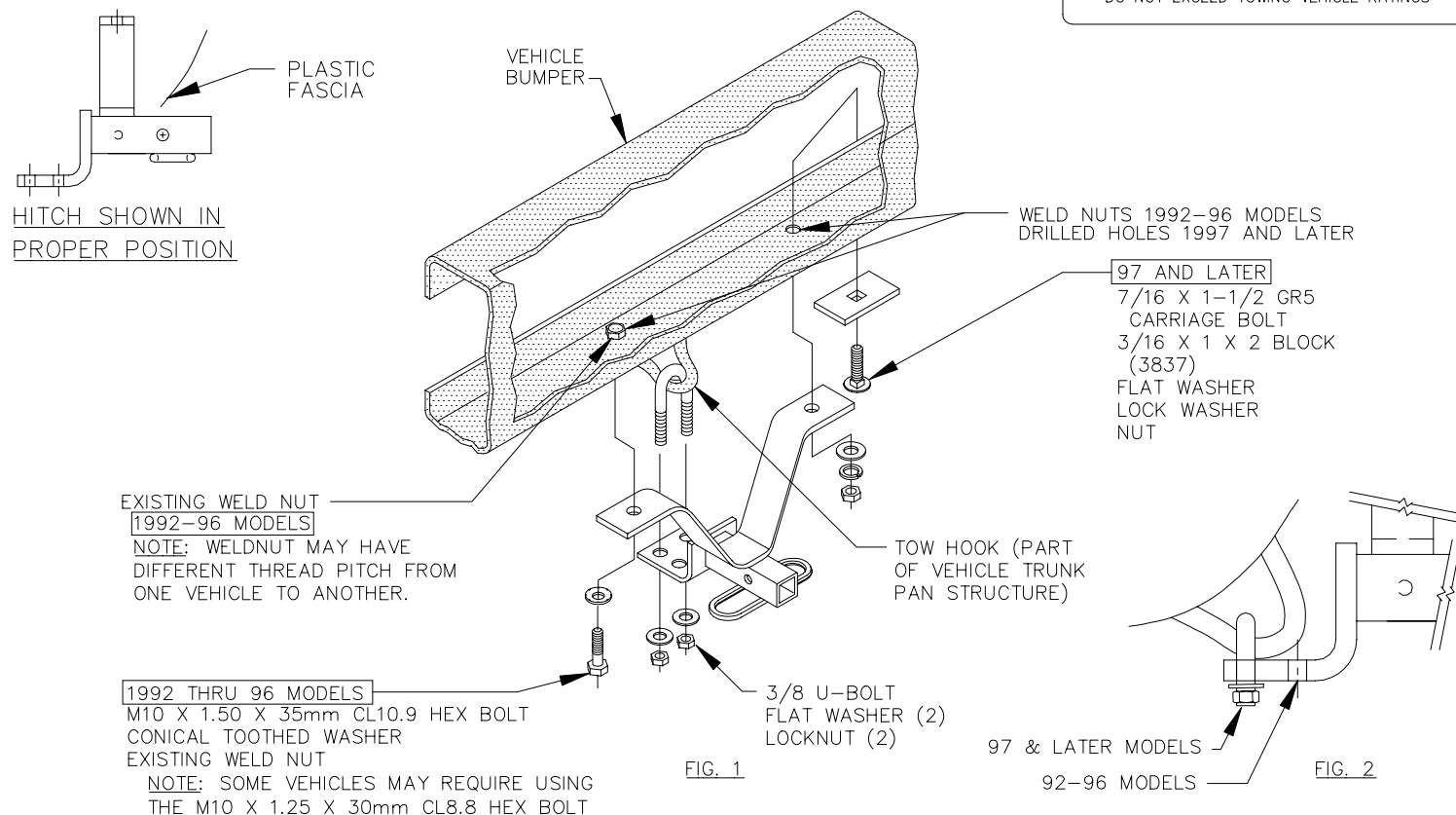
WIRING ACCESS LOCATION:

DRILL BITS: 7/16

HITCH REQUIRES 1/2" PIN AND CLIP.

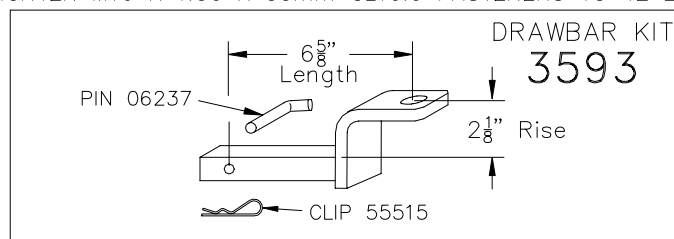
WRENCHES: (TIGHTEN ALL FASTENERS WITH TORQUE WRENCH) 9/16, 11/16, 17mm

2000 LB MAX GROSS TRAILER WT
200 LB MAX TONGUE WEIGHT
DO NOT EXCEED TOWING VEHICLE RATINGS



1. RAISE HITCH INTO POSITION, MAKING SURE HITCH IS CENTERED ON VEHICLE.
2. FASTEN TO VEHICLE TOW HOOK WITH 3/8 U-BOLT, FLAT WASHERS AND LOCKNUTS AS SHOWN IN FIG. 2.
3. INSTALL M10 HEX BOLTS AND CONICAL TOOTHED WASHERS INTO EXISTING WELD NUTS AS SHOWN IN FIG. 1.
NOTE: WELDNUT MAY HAVE DIFFERENT THREAD PITCH FROM ONE VEHICLE TO ANOTHER.
4. USING HITCH AS A TEMPLATE, DRILL TWO (2) 7/16 HOLES THRU BUMPER.
5. INSTALL 7/16 FASTENERS AS SHOWN ABOVE IN FIG. 1.

TIGHTEN 3/8 GR2 FASTENERS TO 20 LB.-FT.
TIGHTEN 7/16 GR5 FASTENERS TO 42 LB.-FT.
TIGHTEN M10 X 1.25 X 30mm CL8.8 FASTENERS TO 32 LB.-FT.
TIGHTEN M10 X 1.50 X 35mm CL10.9 FASTENERS TO 42 LB.-FT.



USE ONLY THE DRAWBAR SHOWN FOR CORRECT BUMPER CLEARANCE AND HEIGHT.
DRAWBAR MUST BE USED IN THE RISE POSITION ONLY.

THIS PRODUCT COMPLIES WITH SAFETY SPECIFICATIONS AND REQUIREMENTS FOR CONNECTING DEVICES AND TOWING SYSTEMS OF THE STATE OF NEW YORK, V.E.S.C. REGULATION V-5 AND SAE J684.

APPROX WEIGHT (LB.)	FASTENER KIT
6.5	01130-999

NOTE: Check hitch frequently, making sure all fasteners and ball are properly tightened. If hitch is removed, plug all holes in trunk pan or other body panels to prevent entry of water and exhaust fumes. A hitch or ball which has been damaged should be removed and replaced. Observe safety precautions when working beneath a vehicle and wear eye protection. Follow car maker's specs for maximum trailer weight and tongue weight. Do not cut access or attachment holes with a torch.

TOWING PRODUCTS
Plymouth, Michigan