

# INSTALLATION INSTRUCTIONS

EQUIPMENT REQUIRED: PHILLIPS SCREWDRIVER, KNIFE

WIRING ACCESS LOCATION:

DRILL BITS: 1/2"

HITCH REQUIRES 1/2" PIN AND CLIP

WRENCHES: (TIGHTEN ALL FASTENERS WITH TORQUE WRENCH) 19mm, 11/16

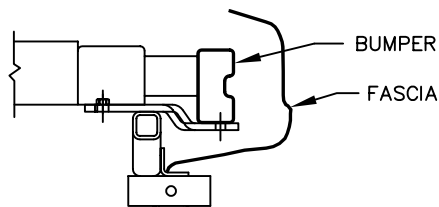
## VEHICLE

MERCURY VILLAGER

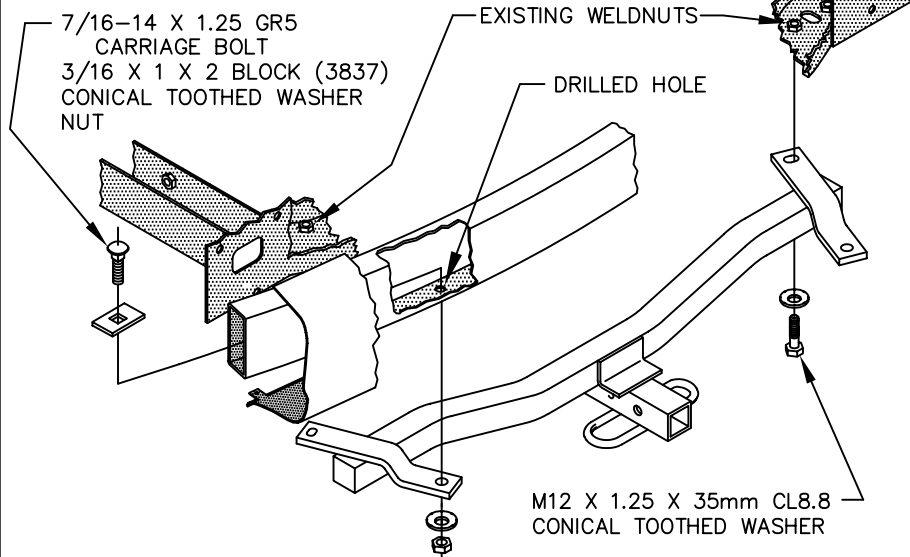
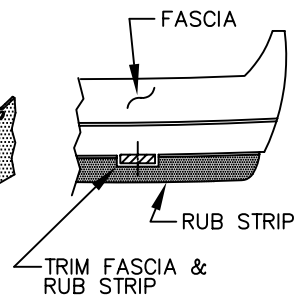
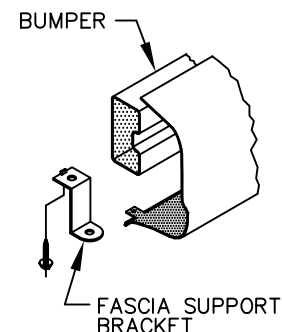
NISSAN QUEST

FASCIA CUTTING REQUIRED ON 1993-1995 MODELS

2000 LB MAX GROSS TRAILER WT  
200 LB MAX TONGUE WEIGHT  
DO NOT EXCEED TOWING VEHICLE RATINGS



HITCH SHOWN IN PROPER POSITION

FIGURE 1.  
ALL MODELSFIGURE 2.  
1993-95 MODELSFIGURE 3.  
1999 & LATER MODELS

### 1996 & LATER VEHICLES

1. REMOVE VEHICLE FASCIA. ON 1999 AND LATER MODELS REMOVE THE STEEL SUPPORT BRACKETS SHOWN IN FIGURE 3 AND RETURN TO VEHICLE OWNER.

### 1993-1995 VEHICLES

1. LOWER VEHICLE RUB STRIP AS SHOWN IN FIGURE 2 BY REMOVING PLASTIC RETAINERS.

### ALL VEHICLES

2. RAISE HITCH INTO POSITION AND INSTALL M12 FASTENERS AS SHOWN IN FIGURE 1.

NOTE: HITCH MUST CONTACT STEEL BUMPER FOR ADEQUATE SUPPORT.

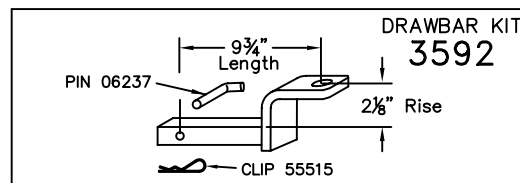
### 1993-1995 VEHICLES

3. TRIM THE FASCIA AND RUB STRIP AROUND THE HITCH SUPPORT BRACKETS AS SHOWN IN FIGURE 2. CONSULT VEHICLE OWNER BEFORE TRIMMING.

### ALL VEHICLES

4. USING THE HITCH AS A TEMPLATE, DRILL TWO 1/2" HOLES IN THE BUMPER.
5. FISHWIRE CARRIAGE BOLTS AND BLOCKS (3837) THRU BUMPER AND ATTACH CONICAL TOOTHED WASHERS AND NUTS.
6. REATTACH RUB STRIP AND/OR VEHICLE FASCIA.

TIGHTEN ALL M12 CL8.8 FASTENERS TO 68 LB.-FT.  
TIGHTEN ALL 7/16 GR5 FASTENERS TO 50 LB.-FT.



USE ONLY THE DRAWBAR SHOWN FOR CORRECT BUMPER CLEARANCE AND HEIGHT.  
DRAWBAR MUST BE USED IN THE RISE POSITION ONLY.

THIS PRODUCT COMPLIES WITH SAFETY SPECIFICATIONS AND REQUIREMENTS FOR CONNECTING DEVICES AND TOWING SYSTEMS OF THE STATE OF NEW YORK, V.E.S.C. REGULATION V-5 AND SAE J684.

APPROX WEIGHT (LB.)  
17

FASTENER KIT  
01131-134

NOTE: Check hitch frequently, making sure all fasteners and ball are properly tightened. If hitch is removed, plug all holes in trunk pan or other body panels to prevent entry of water and exhaust fumes. A hitch or ball which has been damaged should be removed and replaced. Observe safety precautions when working beneath a vehicle and wear eye protection. Follow car maker's specs for maximum trailer weight and tongue weight. Do not cut access or attachment holes with a torch.

**TOWING PRODUCTS**  
Plymouth, Michigan