

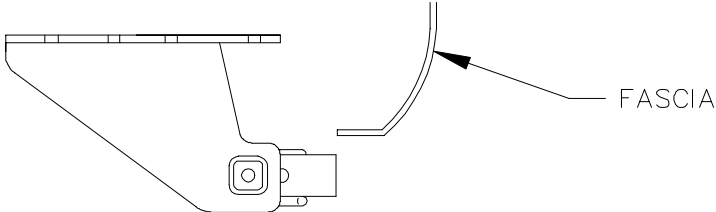
SPORTFRAME®

INSTALLATION INSTRUCTIONS

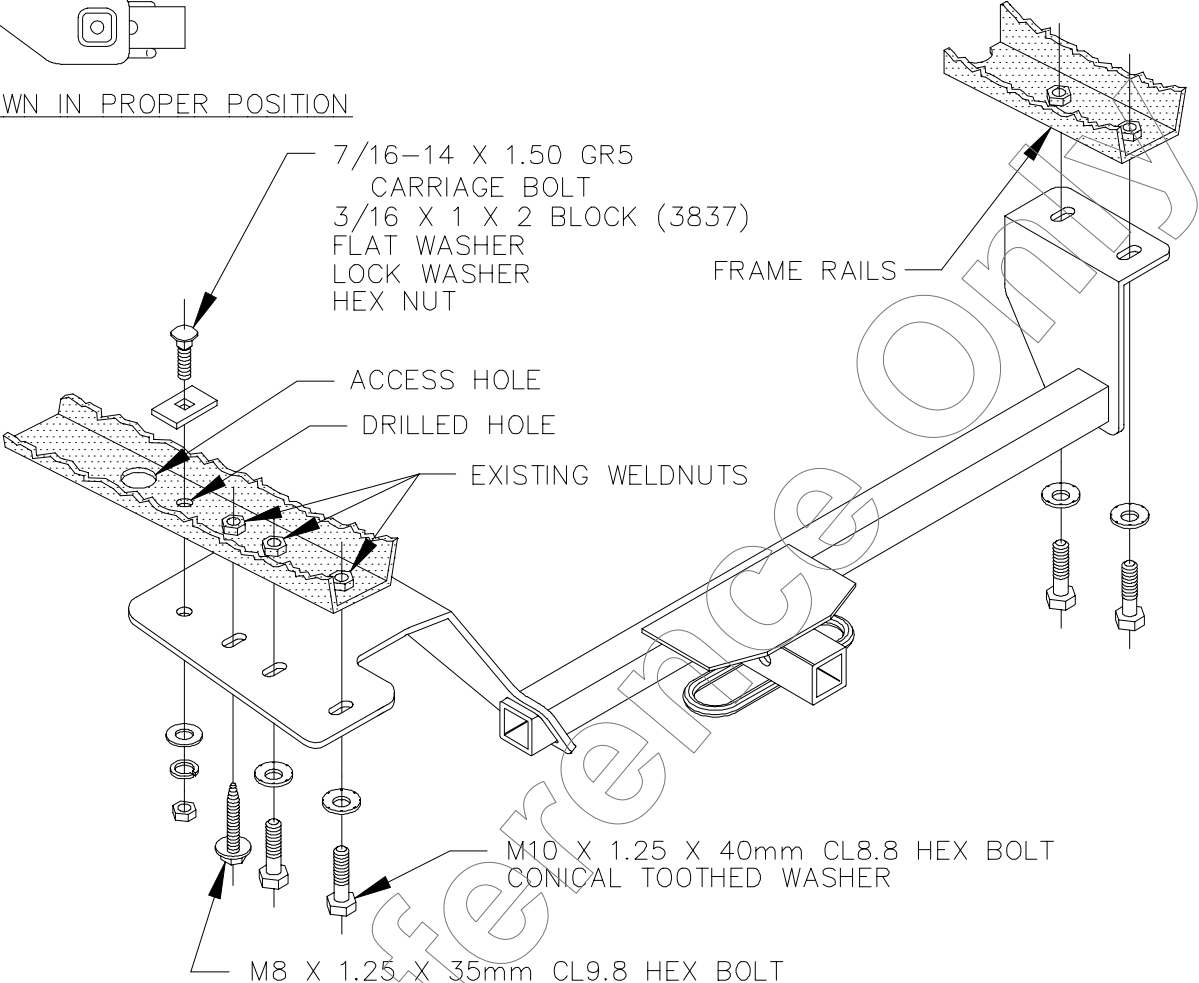
VEHICLE	HITCH NO.
DODGE AVENGER DODGE STRATUS 2DR CHRYSLER SEBRING 2DR	24700

EQUIPMENT REQUIRED:  
WIRING ACCESS LOCATION: PC3, PC4  
DRILL BITS: 1/2  
HITCH REQUIRES 1/2" PIN AND CLIP  
WRENCHES: (TIGHTEN ALL FASTENERS WITH TORQUE WRENCH) 11/16, 12mm, 13mm, 14mm

2000 LB MAX GROSS TRAILER WT  
200 LB MAX TONGUE WEIGHT  
DO NOT EXCEED TOWING VEHICLE RATINGS



HITCH SHOWN IN PROPER POSITION



1. REMOVE MUFFLER AND HEAT SHIELD.
2. REMOVE FOUR (4) EXISTING M10 BOLTS FROM FRAME RAILS.
3. RAISE HITCH INTO POSITION AND INSTALL FOUR (4) M10 BOLTS (SUPPLIED WITH HITCH) AS SHOWN ABOVE.  
NOTE: HEAT SHIELD ATTACHMENT ON THE TRUNK PAN WILL NEED TO BE SHIFTED FOR HITCH CLEARANCE.
4. USING HITCH AS A TEMPLATE, DRILL ONE 1/2" HOLE FOR FORWARD ATTACHMENT AS SHOWN ABOVE.
5. FISHWIRE 7/16 CARRIAGE BOLT AND 3/16 X 1 X 2 BLOCK (3837) THROUGH ACCESS HOLE ON THE FRAME RAIL. INSTALL FLAT WASHER, LOCK WASHER, AND HEX NUT.
6. INSTALL M8 FASTENER.
7. REINSTALL MUFFLER. IF EXISTING FASTENERS ARE DAMAGED, REPLACE WITH M10 FASTENERS PROVIDED.
8. RETURN HEAT SHIELD, BOLTS, & FRAME RAIL BOLTS TO VEHICLE OWNER FOR REINSTALLATION IF HITCH IS REMOVED.

TIGHTEN M8 CL9.8 FASTENERS TO 25 LB.-FT.  
TIGHTEN M10 CL8.8 FASTENERS TO 38 LB.-FT.  
TIGHTEN 7/16 GR5 FASTENERS TO 50 LB.-FT.

COMPLETE HITCH INCLUDES

PIN 2210

CLIP 2209

DRAWBAR

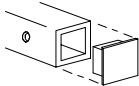
3597

DRAWBAR REPLACEMENT KIT  
(INCLUDES PIN & CLIP)

3592

NOTE: REPLACEMENT DRAWBAR AVAILABLE ONLY  
IN KIT. PINS & CLIPS AVAILABLE SEPARATELY.

USE ONLY THE DRAWBAR SHOWN FOR CORRECT BUMPER CLEARANCE AND HEIGHT.  
DRAWBAR MUST BE USED IN THE RISE POSITION ONLY.  
REMOVE DRAWBAR WHEN NOT TOWING  
TO PROTECT DRAWBAR OPENING IN HITCH WHEN NOT TOWING,  
INSERT COVER #2211 (PURCHASED SEPARATELY).



THIS PRODUCT COMPLIES WITH SAFETY SPECIFICATIONS AND REQUIREMENTS FOR CONNECTING DEVICES AND TOWING SYSTEMS OF THE STATE OF NEW YORK AND V.E.S.C. REGULATION V-5.

APPROX WEIGHT (LB.)	29	FASTENER KIT NO.	F24700
---------------------	----	------------------	--------

NOTE: Check hitch frequently, making sure all fasteners and ball are properly tightened. If hitch is removed, plug all holes in trunk pan or other body panels to prevent entry of water and exhaust fumes. A hitch or ball which has been damaged should be removed and replaced. Observe safety precautions when working beneath a vehicle and wear eye protection. Follow car maker's specs for maximum trailer weight and tongue weight. Do not cut access or attachment holes with a torch.

