

INSTALLATION MANUAL

2055117

Level of Difficulty

Easy

Parts List

1	Driver / left side bar / running board*
1	Passenger / right side bar / running board*
6	VersaTrac™ mounting bracket, universal
12	Hex bolt, M8
30	Flat washer, M8
30	Lock washer, M8
30	Hex nut, M8

* Side bars / running boards sold separately

Tools Required

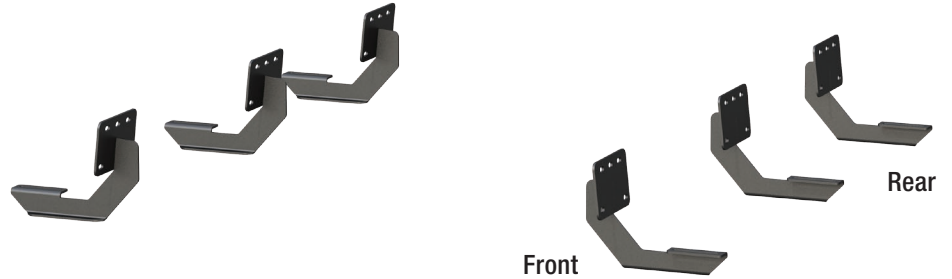
Ratchet	Socket set
Torque wrench	Level

Torque Specifications

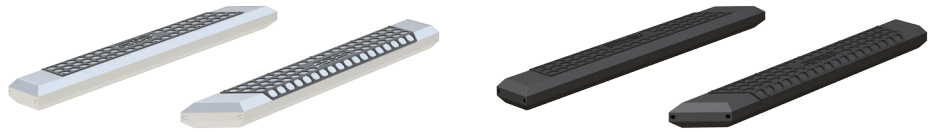
	Metric	SAE	
	M6 bolt		3 ft-lbs.
	M8 bolt		7 ft-lbs.
	M10 bolt		16 ft-lbs.
	M12 bolt		28 ft-lbs.
	1/4" bolt		3 ft-lbs.
	5/16" bolt		7 ft-lbs.
	3/8" bolt		16 ft-lbs.
	7/16" bolt		20 ft-lbs.
	1/2" bolt		28 ft-lbs.

Use above torque setting unless otherwise noted

Product Photo



AdvantEDGE™ (not included)



RidgeStep™ (not included)



Notes and Maintenance

Before you begin installation, read all instructions thoroughly.

Proper tools will improve the quality of installation and reduce the time required.

To protect the product, wax after installing. Regular waxing is recommended to add a protective layer over the finish. Do not use any type of polish or wax that may contain abrasives that could damage the finish.

For polished, gloss and other smooth finishes, polish may be used to clear small scratches and scuffs on the finish.

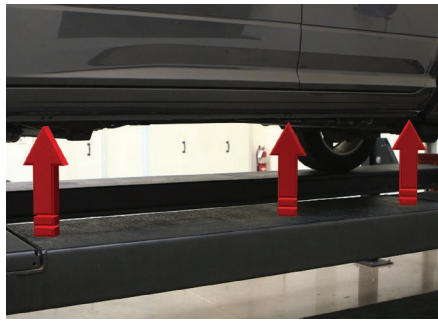
Mild automotive detergent may be used to clean the product. Do not use dish detergent, abrasive cleaners, abrasive pads, wire brushes or other similar products that may damage the finish.

Refer to the last page of this manual for troubleshooting, warranty and product registration information.

Refer to the table to the left when securing hardware during the installation process to help prevent damage to the product or vehicle.

Step 1

Starting on the driver side, locate the three mounting tabs along the bottom edge of the vehicle.



Step 2

Starting at the front mounting location, remove any debris from the factory studs.

Attach a mounting bracket using an M8 flat washer, lock washer and hex nut.

Note: Apply anti-seize to the studs to keep nuts from seizing up.

Repeat this process for the middle and rear mounting locations.

Snug the hardware, but do not fully tighten at this time.



Step 3

Repeat step 2 for the front, middle and rear mounting locations on the passenger side.



If installing RidgeStep™ running boards, skip to Step 5A

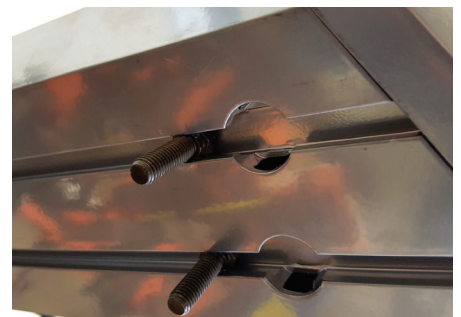
Step 4A - AdvantEDGE™ Side Bars

Carefully place the side bar onto the mounting brackets.

Align the edge of the side bar with the outer edge of the mounting brackets.

Locate the round slots on the base of the side bar.

Insert two black M8 hex bolts into the rail slots for each bracket.



Step 4B - AdvantEDGE™ Side Bars

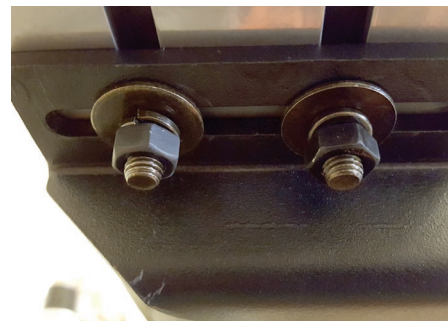
Slide the bolts down the rail so that two bolts are positioned for each bracket.

Carefully lift the side bar up and move the bolts as necessary so they are in line with the slots on the mounting brackets.

Secure the side bar to the brackets using black M8 flat washers, lock washers and hex nuts.

Snug the hardware, but do not fully tighten.

Continue to step 6.



Step 5A - RidgeStep™ Running Boards

Slide the three C-shaped track mounting brackets into the rail slots.



Step 5B - RidgeStep™ Running Boards

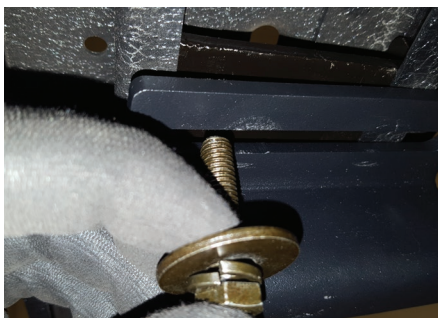
Carefully place the running board onto the mounting brackets.

Align the C-shaped track mounting brackets with the mounting brackets on the vehicle.



Step 5C - RidgeStep™ Running Boards

Secure the C-shaped track mounting brackets to the mounting brackets using black M8 hex bolts, lock washers and flat washers.



Step 6

At this time, adjust the side bar / running board to the desired location.

With the side bar / running board in position, it is recommended to tighten all brackets to the vehicle first, followed by the side bar / running board connections.

For recommended torque specifications, refer to the table on page one.



Step 7

Repeat steps 4 through 6 to install the side bar / running board to the brackets on the passenger side of the vehicle.

Congratulations on the installation of your new ARIES AdvantEDGE™ side bars / RidgeStep™ running boards.

With the side bars / running boards installed, periodic inspections should be performed to ensure all mounting hardware remains tight.

To protect your investment, see the 'Notes and Maintenance' section on the second page of this instruction manual.



Product Registration

CURT Group stands behind our products with industry leading warranties. You can help us continue to improve our product line and help us understand your needs by registering your purchase by visiting:

warranty.curtgroup.com/surveys

At CURT Group, customer is king. We value your feedback and we use that information to make improvements on our products. Please, take a minute and let us know how we are doing.