

INSTALLATION INSTRUCTIONS

EQUIPMENT REQUIRED:

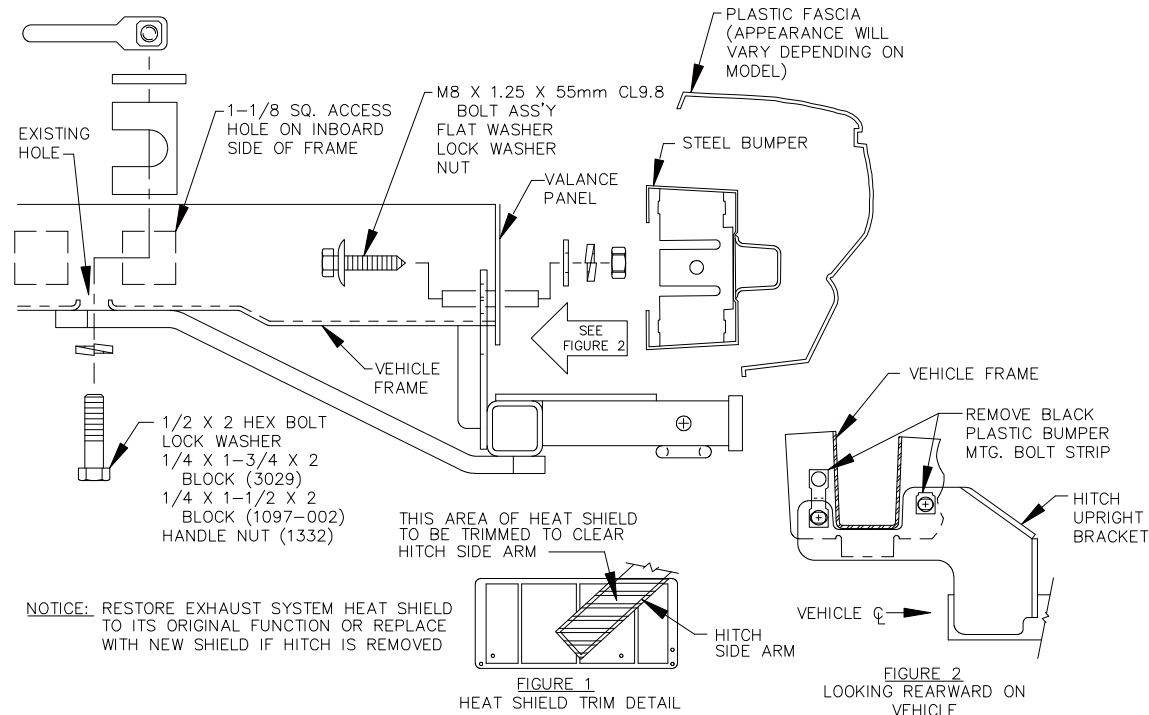
WIRING ACCESS LOCATION: PC3, PC4

DRILL BITS: NONE

HITCH REQUIRES 1/2" PIN AND CLIP

WRENCHES: (TIGHTEN ALL FASTENERS WITH TORQUE WRENCH) 7mm, 10mm, 13mm, 3/4

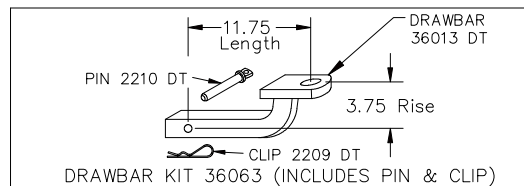
3500 LB MAX GROSS TRAILER WT
300 LB MAX TONGUE WEIGHT
DO NOT EXCEED TOWING VEHICLE RATINGS



NOTICE: RESTORE EXHAUST SYSTEM HEAT SHIELD TO ITS ORIGINAL FUNCTION OR REPLACE WITH NEW SHIELD IF HITCH IS REMOVED

1. REMOVE BLACK PLASTIC BUMPER MOUNTING BOLT STRIPS BY REMOVING THREE (3) NUTS AT REAR SURFACE OF VALANCE PANEL, TWO (2) OUTBOARD AND ONE (1) INBOARD OF VEHICLE FRAME, EACH SIDE.
2. LOWER DRIVER'S SIDE MUFFLER BY REMOVING BOLTS CONNECTING MUFFLER HANGER BRACKET TO VEHICLE FRAME.
ON VEHICLES WITH DUAL EXHAUST:
LOWER PASSENGER'S SIDE MUFFLER BY REMOVING ONE (1) BOLT FROM MUFFLER HANGER BRACKET, FORWARD OF MUFFLER.
3. REMOVE EXHAUST HEAT SHIELD FROM OVER MUFFLER ON DRIVER'S SIDE BY REMOVING FIVE (5) SHEET METAL SCREWS. TRIM HEAT SHIELD AS SHOWN IN FIGURE 1.
NOTE: ON VEHICLES WITH DUAL EXHAUST, PASSENGER'S SIDE MUFFLER DOES NOT HAVE A HEAT SHIELD.
4. RAISE HITCH INTO POSITION, LINING UP HOLES IN HITCH UPRIGHT BRACKETS WITH HOLES IN FORWARD SURFACE OF VEHICLE VALANCE PANEL. INSTALL M8 FASTENERS THROUGH VALANCE PANEL AND HITCH UPRIGHT BRACKET, EACH SIDE, AS SHOWN.
5. INSTALL C-SHAPED BLOCK (3029) THROUGH SQUARE ACCESS HOLE ON INBOARD SIDE OF FRAME AROUND EXISTING HOLE, EACH SIDE. THROUGH ACCESS HOLE, INSTALL BLOCK (1097-002) OVER C-SHAPED BLOCK AND HANDLE NUT (1332) AS SHOWN, EACH SIDE.
6. INSTALL 1/2 X 2 BOLT AND LOCK WASHER UP THROUGH HITCH SIDE ARM, EXISTING HOLE IN FRAME, BLOCKS (3029 & 1097-002) AND HANDLE NUT (1332), EACH SIDE.
7. REINSTALL EXHAUST HEAT SHIELD REMOVED AND TRIMMED IN STEP 3.
NOTICE: RESTORE EXHAUST SYSTEM HEAT SHIELD TO ITS ORIGINAL FUNCTION OR REPLACE WITH NEW SHIELD IF HITCH IS REMOVED.
8. REATTACH MUFFLER(S) BY REVERSING STEP 2.

TIGHTEN M8 CL9.8 FASTENERS TO 25 LB.-FT.
TIGHTEN 1/2 GR5 FASTENERS TO 75 LB.-FT.



USE ONLY THE DRAWBAR SHOWN FOR CORRECT BUMPER CLEARANCE AND HEIGHT.
DRAWBAR MUST BE USED IN THE RISE POSITION ONLY.

THIS PRODUCT COMPLIES WITH SAFETY SPECIFICATIONS AND REQUIREMENTS FOR CONNECTING DEVICES AND TOWING SYSTEMS OF THE STATE OF NEW YORK AND V.E.S.C. REGULATION V-5.

APPROX WEIGHT (LB.)	FASTENER KIT NO.
37.6	1130-813

NOTE: Check hitch frequently, making sure all fasteners and ball are properly tightened. If hitch is removed, plug all holes in trunk pan or other body panels to prevent entry of water and exhaust fumes. A hitch or ball which has been damaged should be removed and replaced. Observe safety precautions when working beneath a vehicle and wear eye protection. Follow car maker's specs for maximum trailer weight and tongue weight. Do not cut access or attachment holes with a torch.

TOWING PRODUCTS

Canton, Michigan
Elkhart, Indiana