

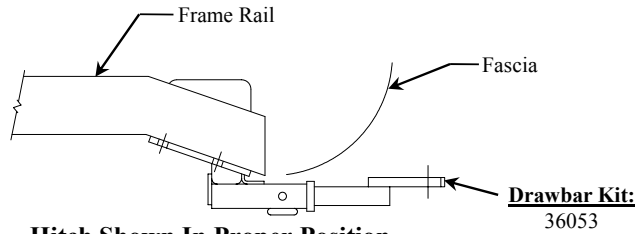
Optional Drawbar Kit 36061  
 (Sold Separately)  
 For 1998-2000 Model Years  
 Must be used in Rise position only

# Installation Instructions

## Toyota Sienna

Part Numbers:

**36298**  
**90638**  
**06077**



**Do Not Exceed Lower of Towing Vehicle  
 Manufacturer's Rating or**

**3500 LB (1589 Kg.) Max Gross Trailer Weight**  
**300 LB (136 Kg.) Max Tongue Weight**

**Wiring Access Location:** SUV3, SUV4

**Hitch Shown In Proper Position**

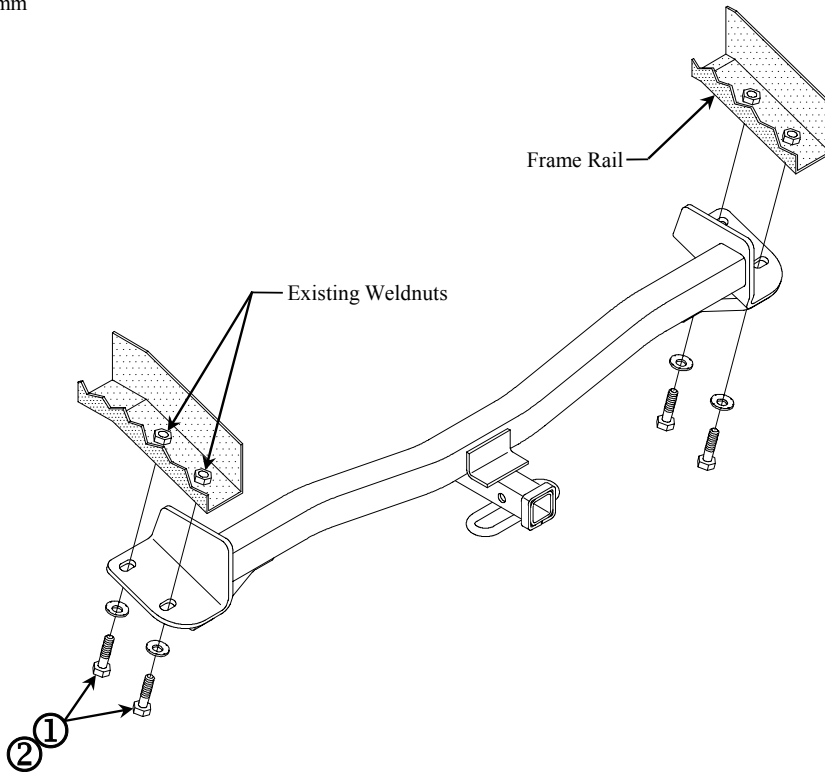
Drawbar must be used in the Rise position only.

**Equipment Required:**

**Fastener Kit:** F36298

**Wrenches:** 7/8", 16mm

**Drill Bits:** None



①	Qty. (4)	Hex Bolt – M10 x 1.25 x 30mm CL10.9	②	Qty. (4)	Conical Toothed Washer – 7/16"
---	----------	-------------------------------------	---	----------	--------------------------------

1. Remove tow hooks from frame rails.
2. Raise hitch into position and install fasteners as shown above.
3. Return all fasteners and tow hooks to vehicle owner.

Tighten all M10 x 1.25 CL10.9 fasteners with torque wrench to 53 Lb.-Ft. (72 N\*M)

Note: check hitch frequently, making sure all fasteners and ball are properly tightened. If hitch is removed, plug all holes in trunk pan or other body panels to prevent entry of water and exhaust fumes. A hitch or ball which has been damaged should be removed and replaced. Observe safety precautions when working beneath a vehicle and wear eye protection. Do not cut access or attachment holes with a torch.  
 This product complies with safety specifications and requirements for connecting devices and towing systems of the state of New York, V.E.S.C. Regulation V-5 and SAE J684.