

INSTALLATION INSTRUCTIONS

EQUIPMENT REQUIRED:

WIRING ACCESS LOCATION: SUV1, SUV2

DRILL BITS: 9/16

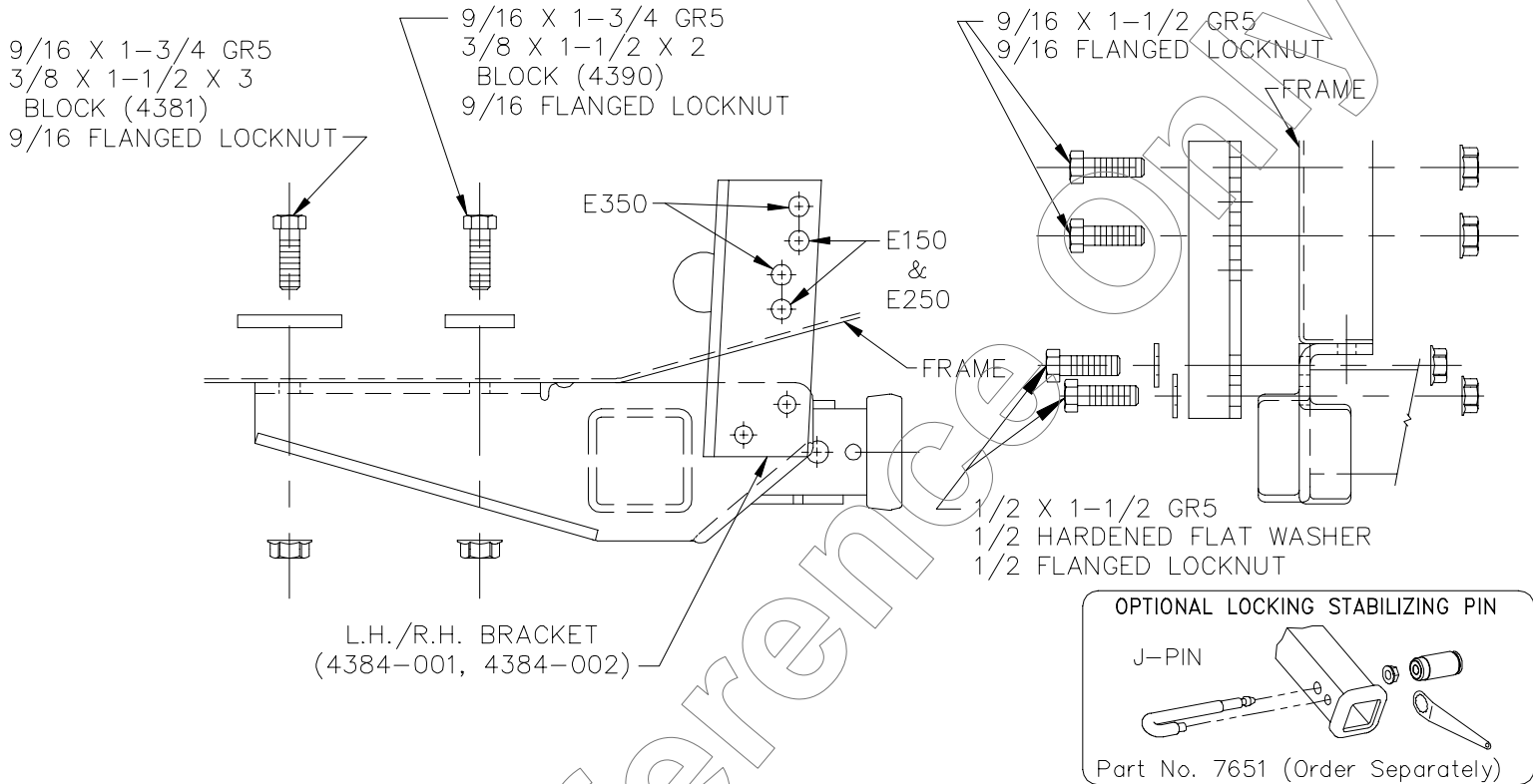
HITCH REQUIRES 5/8" PIN AND CLIP IF STABILIZING PIN (7651) IS NOT INSTALLED.

WRENCHES: (TIGHTEN ALL FASTENERS WITH TORQUE WRENCH) 3/4, 13/16, 7/8

VEHICLE	HITCH NO.
FORD VAN (FULL SIZE) MODELS WITH 138" WB WITHOUT FACTORY STEP BUMPER	41915

DO NOT EXCEED LOWER OF
TOWING VEHICLE MFR'S RATINGS OR

HITCH TYPE ▼	MAX GROSS TRLR WT(LB)	MAX TONGUE WT(LB)
WEIGHT DISTRIBUTING	12,000	1200
WEIGHT CARRYING BALL MOUNT	10,000	1000



NOTE: INSTALLATION OF THIS RECEIVER WILL REQUIRE RELOCATION OR MODIFICATION OF THE TAIL PIPE(S) AND/OR TAIL PIPE HANGER.

1. REMOVE THE BOLT ATTACHING THE REAR EXHAUST HANGER TO THE FRAME RAIL AND ALLOW THE EXHAUST PIPE(S) TO HANG DOWN.
2. LOOSELY ASSEMBLE THE TWO MOUNTING BRACKETS TO THE EXISTING HOLES IN THE SIDE OF EACH FRAME RAIL USING 9/16" X 1-1/2" HEX BOLTS AND 9/16" HEX NUTS. USE THE HIGHER SET OF HOLES IN THE MOUNTING BRACKETS FOR THE E350 AND THE LOWER SET FOR THE E150, E250 MODELS.
3. LIFT THE RECEIVER INTO POSITION AND CENTER ON THE FRAME RAILS. SECURELY CLAMP THE RECEIVER IN POSITION.
4. LOOSELY ASSEMBLE THE MOUNTING BRACKETS TO THE RECEIVER USING 1/2-20 X 1-1/2 HEX BOLTS, FLAT WASHERS, AND 1/2 FLANGED LOCKNUTS.
5. USING THE RECEIVER AS A TEMPLATE, DRILL FOUR (4) 9/16" HOLES INTO THE FRAME.
6. INSTALL THE REMAINING FASTENERS AS SHOWN, PLACING THE BLOCKS INSIDE THE FRAME RAILS.

TIGHTEN 1/2 GR5 FASTENERS TO 95 LB.-FT.

TIGHTEN 9/16 GR5 FASTENERS TO 110 LB.-FT.

7. MODIFY OR RELOCATE THE EXHAUST SYSTEM AS REQUIRED TO CLEAR THE RECEIVER.

THIS PRODUCT COMPLIES WITH SAFETY SPECIFICATIONS AND REQUIREMENTS FOR CONNECTING DEVICES AND TOWING SYSTEMS OF THE STATE OF NEW YORK AND V.E.S.C. REGULATION V-5.

APPROX WEIGHT (LB.)	62.2	FASTENER KIT NO.	1130-711
---------------------	------	------------------	----------

NOTE: Check hitch frequently, making sure all fasteners and ball are properly tightened. If hitch is removed, plug all holes in trunk pan or other body panels to prevent entry of water and exhaust fumes. A hitch or ball which has been damaged should be removed and replaced. Observe safety precautions when working beneath a vehicle and wear eye protection. Follow car maker's specs for maximum trailer weight and tongue weight. Do not cut access or attachment holes with a torch.

