

Parts List

| | |
|----|---|
| 1 | Driver / left side bar |
| 1 | Passenger / right side bar |
| 4 | Mounting bracket, universal |
| 2 | Mounting bracket, passenger / right, front, upper |
| 2 | Mounting bracket, passenger / right, front, lower |
| 6 | Bolt plate, stainless steel |
| 24 | Flat washer, M6 |
| 24 | Nylock nut, M6 x 1, CL8.8 |
| 10 | Flat washer, M8 |
| 10 | Lock washer, M8 |
| 10 | Hex head cap screw, M8 x 1.25 - 30mm, CL8.8 |
| 10 | Clip nut, M8 |
| 2 | Flat washer, M10 |
| 2 | Lock washer, M10 |
| 2 | Hex head cap screw, M10 x 1.5 - 30mm, CL8.8 |

Additional Hardware*

| | |
|----|---------------------------------|
| 24 | T-bolt, M8 x 1.25 - 25mm, CL8.8 |
| 24 | Flat washer, M8 |
| 24 | Lock washer, M8 |
| 24 | Hex nut, M8 x 1, CL8.8 |

* Aluminum boards are supplied with additional hardware. Quantities listed are in addition to the standard supplied hardware.

Tools Required

| | |
|-------------------|--------------|
| Ratchet | Socket, 10mm |
| Ratchet extension | Socket, 13mm |
| Wrench, 16mm | Socket, 16mm |
| Level | |

Level of Difficulty

Easy



Scan for helpful install tips

Product Image



Notes and Maintenance

Before you begin installation, read all instructions thoroughly.

Proper tools will improve the quality of installation and reduce the time required.

To protect the product, wax after installing. Regular waxing is recommended to add a protective layer over the finish. Do not use any type of polish or wax that may contain abrasives that could damage the finish.

For polished, gloss and other smooth finishes, polish may be used to clear small scratches and scuffs on the finish.

Mild automotive detergent may be used to clean the product. Do not use dish detergent, abrasive cleaners, abrasive pads, wire brushes or other similar products that may damage the finish.

Refer to the table below when securing hardware during the installation process to help prevent damage to the product or vehicle.

Torque Specifications

| METRIC | | SAE | |
|----------|-------------|------------|-------------|
| M6 bolt | 3 ft.-lbs. | 1/4" bolt | 3 ft.-lbs. |
| M8 bolt | 7 ft.-lbs. | 5/16" bolt | 7 ft.-lbs. |
| M12 bolt | 16 ft.-lbs. | 3/8" bolt | 16 ft.-lbs. |
| M12 bolt | 28 ft.-lbs. | 7/16" bolt | 20 ft.-lbs. |
| -- | -- | 1/2" bolt | 28 ft.-lbs. |

Use above torque setting unless otherwise noted

Step 1

Locate the mounting tabs along the bottom edge of the vehicle body.

For crew cab models, use the first, second and fifth mount locations.

For Extended cab and Double cab models, use the first, second and fourth mount locations.

For Regular cab models, only use two brackets per side.



Step 2

2A - Starting at the front driver side mount location, place a universal bracket over the two factory mount locations.

Attach the bracket to the body panel using two M8 hex bolts with lock and flat washers.

The bolts should be snug, but do not tighten at this time.



2B - Some models will require the use of an M8 clip nut for the bottom mount location if the vehicle is not supplied with the threaded mount.

If required, slide an M8 clip nut over the mounting tab with the nut on the top surface.

Attach the bracket to the body panel using an M8 hex bolt, lock and flat washer.



Step 3

Repeat steps 2A and 2B to install the second bracket over the second mounting tab location from step 1.



Step 4

Locate the fourth tab location from step 1 and remove the rubber plug from the access hole.

Insert a clip nut through the access hole and align it over the adjacent small hole.



Step 5

Repeat step 2B to secure the bottom of the bracket with an M8 clip nut, bolt, lock and flat washer.

Attach the bracket to the body panel using an M8 hex bolt, lock and flat washer.



Step 6

Carefully place the side bar onto the brackets with the larger step pad towards the front of the vehicle.



Step 7A - For Polished Stainless Steel Side Bars

Insert the bolt plate into the bottom channel of the side bar, and attach with a M6 flat washer and nylock nut.

Snug the hardware with a 10mm socket. To allow for adjustments, do not over tighten.



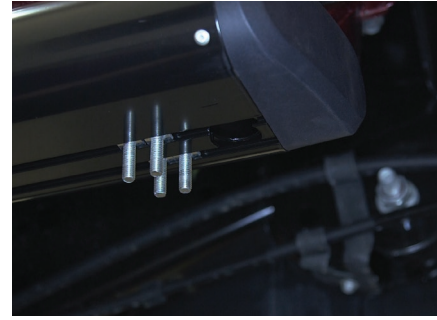
Step 7B - For Semi-Gloss Black, Aluminum Side Bars

Insert four T-bolts into the bottom channels of the side bar as shown.

Slide the bolts forward to the front bracket and insert them through the bracket cradle. Repeat this for the middle and rear brackets.

Secure the side bar to the brackets using twelve M8 flat washers, lock washers and hex nuts.

Snug the hardware, but do not fully tighten.



Step 8

Adjust and level the side bar, centering it between the front and rear wheel wells.

With the side bar in position, it is recommended to tighten all brackets to the vehicle first, followed by the side bar connections.



Step 9

Locate the front mounting point on the passenger side of the vehicle to install the front two passenger mounting brackets.

Note: If there is a Def tank you will not be able to insert the M8 hardware on front upper bracket.

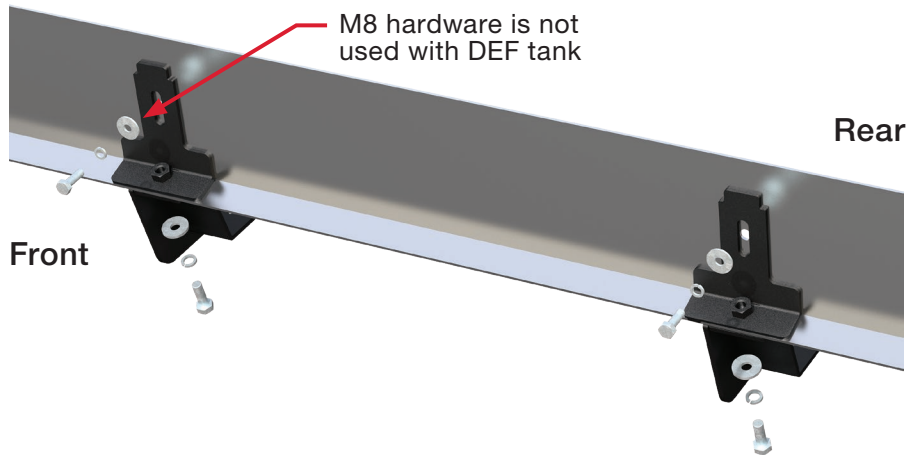
Place the upper mounting bracket against the rocker panel. Align the weld nut on the upper mounting bracket with the mounting hole in the rocker panel. Secure the top mounting bracket to the rocker panel using an M8 hex bolt, M8 lock washer and M8 flat washer.

Align one of the passenger front lower mounting brackets with the upper mounting bracket. Secure the two mounting brackets together using an M10 hex bolt, M10 lock washer and M10 flat washer.

Torque all M10 hardware to 31.6 ft-lbs.

Repeat this process to install the second passenger mounting bracket.

Snug the hardware, but do not fully tighten.



Step 10

Repeat steps 4 through 8 on the passenger side of the vehicle.

Congratulations on the installation of your new ARIES 6" oval side bars.

With the side bars installed, periodic inspections should be performed to ensure all mounting hardware remains tight.

To protect your investment, see the 'Notes and Maintenance' section on the first page of this instruction manual.

