

INSTALLATION INSTRUCTIONS

EQUIPMENT REQUIRED:

WIRING ACCESS LOCATION: SUV6

DRILL BITS:

HITCH REQUIRES 5/8" PIN AND CLIP IF STABILIZING PIN IS NOT INSTALLED.

WRENCHES: (TIGHTEN ALL FASTENERS WITH TORQUE WRENCH) 7/8, 22mm

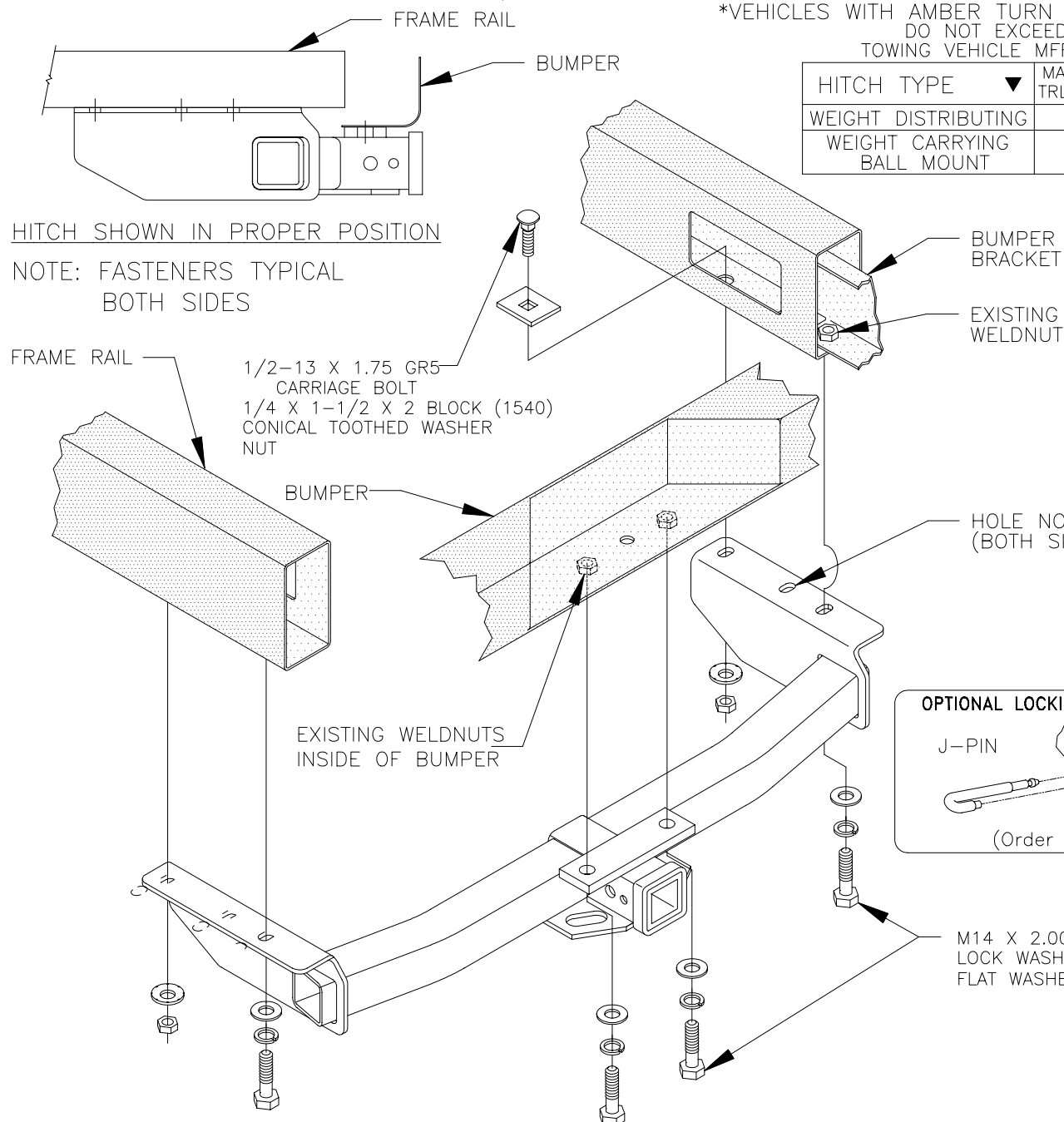
VEHICLE

HITCH NO.

ALL REQUIRE OEM BUMPER
 CHEVROLET SUBURBAN*
 CHEVROLET TAHOE*
 GMC YUKON XL*
 GMC YUKON*
 CADILLAC ESCALADE
 CHEVROLET AVALANCHE
 *VEHICLES WITH AMBER TURN SIGNALS
 DO NOT EXCEED LOWER OF
 TOWING VEHICLE MFR'S RATINGS OR

51041
 44095

HITCH TYPE ▼	MAX GROSS TRLR WT(LB)	MAX TONGUE WT(LB)
WEIGHT DISTRIBUTING	10,000	1000
WEIGHT CARRYING BALL MOUNT	5000	500



1. REMOVE EXISTING M14 BUMPER BRACKET BOLTS ON BOTH SIDES FROM BOTTOM SURFACE OF FRAME AND RETURN TO VEHICLE OWNER.

2. RAISE HITCH INTO POSITION AND INSTALL AS SHOWN WITH FASTENERS PROVIDED.

TIGHTEN ALL 1/2-13 GR5 FASTENERS TO 75 LB-FT.

TIGHTEN ALL M14 CL10.9 FASTENERS TO 148 LB-FT.

THIS PRODUCT COMPLIES WITH SAFETY SPECIFICATIONS AND REQUIREMENTS FOR CONNECTING DEVICES AND TOWING SYSTEMS OF THE STATE OF NEW YORK AND V.E.S.C. REGULATION V-5.

APPROX WEIGHT (LB.)

FASTENER KIT

35

K51041

NOTE: Check hitch frequently, making sure all fasteners and ball are properly tightened. If hitch is removed, plug all holes in trunk pan or other body panels to prevent entry of water and exhaust fumes. A hitch or ball which has been damaged should be removed and replaced. Observe safety precautions when working beneath vehicle and wear eye protection. Follow car maker's specs for maximum trailer weight and tongue weight. Do not cut access or attachment holes with a torch.

TOWING PRODUCTS

Plymouth, Michigan