



INSTALLATION INSTRUCTIONS

DO NOT EXCEED PRODUCT RATING OR TOW VEHICLE LAMP LOAD RATING, WHICHEVER IS LOWER

56292 APPLICATIONS

Make	Model
Ford	Edge Titanium

WIRING LOCATION GUIDE

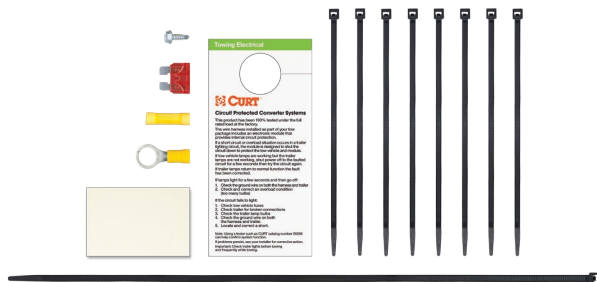
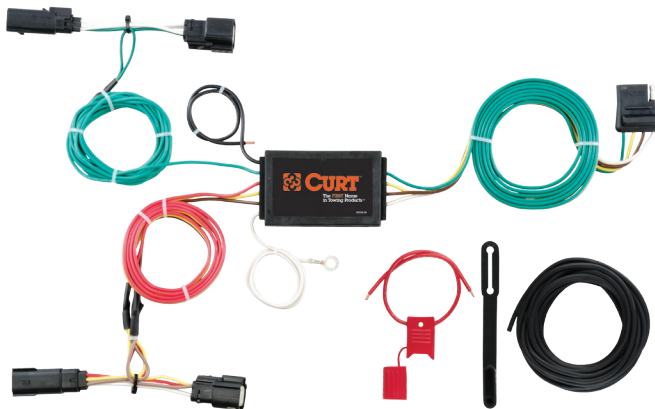
SUVs, MINI & FULL-SIZED VANS (S)

Representative vehicle shown below

S1 - Behind driver side taillight housing

S2 - Behind passenger side taillight housing

VEHICLE-TO-TRAILER WIRING HARNESS



NOTE

All steps must be followed to ensure the CURT wiring harness will function properly. Once installed, test for proper function by using a test light or connecting a properly wired trailer.

TOOLS NEEDED

- 7mm socket
- 10mm socket
- 1/4" socket
- Ratchet
- Ratchet extension
- Panel trim removal tool
- Wire stripper
- Crimping tool
- Side cutter
- Cutting tool
- T-25 Torx bit
- Grommet sealant

WARNING

The battery connection must be fuse protected, 10 amp max. Exceeding the product rating can cause loss of warranty, overheating and potential fire. Do not exceed product rating or tow vehicle lamp load rating, whichever is lower.

Signal Circuits - 3.0 amps per side

Tail / Running Circuits - 6.0 amps total

Check vehicle owner's manual or contact the vehicle manufacturer for more information.

INSTALLATION

Step 1

Locate vehicle battery on the driver side under the hood and disconnect the negative battery terminal (A).

Step 2

Open the vehicle tailgate. Remove all trunk floor coverings and storage trays (B).

Step 3

Remove the two fasteners securing the rear scuff panel. Remove the scuff panel by pulling out on the bottom and then up (C). Take care not to damage the alignment tabs on the back.

Step 4

Underneath the vehicle, locate a panel behind each rear tire. Remove the fasteners securing the panels in place. Remove the panels to gain access for routing the CURT wiring harness (D).

Step 5

Starting in the trunk on the driver side, pull back on the side trim panel to locate the grommet in the floor pan. Remove the grommet from the floor pan and route all the wiring harness wires, excluding the 4-flat and white ground wire, through the exposed hole (E).

Step 6

Continuing on the driver side, remove the plastic cover and fastener securing the taillight (F). Loosen the taillight assembly by gently pulling rearward and out.

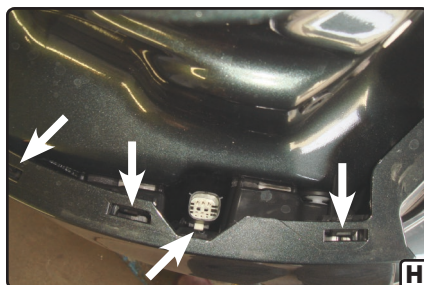
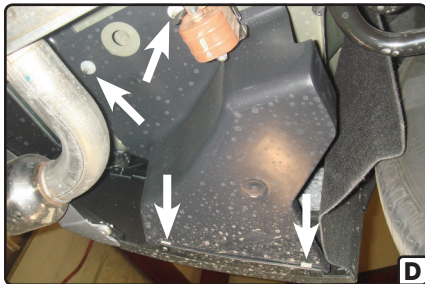
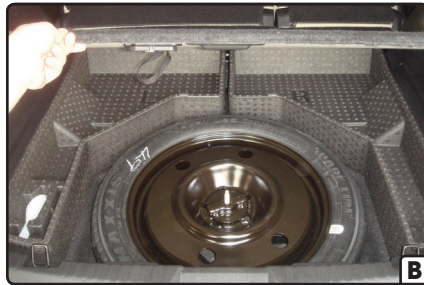
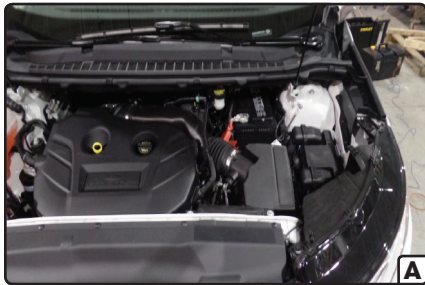
Step 7

Behind the taillight, locate the vehicle taillight wiring harness connectors. The connectors will be similar to those on the CURT wiring harness. Separate the connectors from the taillight housing taking care not to damage the locking tabs (G).

Step 8

Remove the fastener holding the taillight connector into place (H). Do not let the taillight connector fall behind the fascia. Pull back on the outer cover of the fascia and release the fasteners

Instructions continued on page 3



INSTALLATION CONTINUED

holding it in place to allow for routing the CURT wiring harness (I).

Step 9

Using a piece of wire (not included) route the wiring harness ends with the yellow wire behind the fascia to the taillight (J).

Step 10

Remove the white push fastener from the taillight connector and place it onto the wiring harness housing. Insert the CURT wiring harness end with yellow wire between the separated connectors. Make sure the connectors are fully inserted with locking tabs in place (K).

Step 11

Reinstall the connector with the white push fastener back into place (L).

Step 12

Taking the removed grommet from the vehicles floor pan (M). Make a small slit in the grommet from center out to allow the T-Connector wires to pass through. Seat the grommet with the T-Connector wires passing through. Use a sealant (not included) to seal grommet where the wires pass through and where grommet was cut (N).

Step 13

Locate a suitable grounding point near the connector such as an existing screw with nut in the vehicle frame or drill a 3/32" pilot hole for the provided screw. The area should be free of rust, dirt and paint. Secure the white ground wire using the ring terminal and provided screw.

WARNING: Check for miscellaneous items that may be

hidden behind or under any surface before drilling to avoid damage and / or personal injury.

Step 14

Locate a flat spot inside the vehicle, near the taillight. Adhere the black converter box using the provided double-sided tape (N).

Step 15

Route the CURT wiring harness end with the green wire to the passenger side along the back bumper. Repeat steps 6-11 on the passenger side using the harness end with the green wire.

Step 16

Route the black power wire from the vehicle battery as shown on the included CME-PCL-INS sheet.

Step 12

When in use, route the 4-flat to the center of the vehicle. When not in use, roll up and store in a convenient, out of the way location. Secure any loose wires with the provided cable ties.

Step 13

Reinstall all items removed during install and reconnect negative battery terminal. Install the provided 4-flat dust cover to help prevent corrosion.

