



**Warning: On two wheel drive trucks a clearance check must be performed when truck is loaded and unloaded to verify the inverted ball will not interfere with the top of the differential.**

Make/Model	Style	Years From	Years To	20K Part#	30K Part#	Foot Notes
<b>CHEVROLET/GMC</b>						
1500 C/K Series	Long Bed	1988	1998	61103	61503	
	Short Bed	1988	1998	61104	61504	
1500 Silverado/Sierra	New Body	2007	2013	61231	61331	
	Classic Body	1999	2007	61241	61341	Z
2500 & 3500 C/K Series	Long Bed (Old Body)	1988	2000	61103	61503	
	Short Bed (Old Body)	1988	2000	61104	61504	
2500HD/3500 Silverado/Sierra		2011	2015	61200	61301	Z
		2001	2010	61241	61341	Z
2500LD Silverado/Sierra	Classic Body	1999	2007	61241	61341	Z
<b>DODGE</b>						
Ram 1500		2002	2008	61219	61319	Z
		1994	2001	61109	61509	
Ram 2500/3500		2003	2012	61129	61529	
		1994	2002	61109	61509	
<b>FORD</b>						
F-150		2004	2013	61221	61321	Z
		1997	2003	61106	61506	
		1980	1996	61105	61505	
F-250	Heritage Edition	2004	2004	61106	61506	
	Old Body	1997	1998	61105	61505	
F-350		1980	1996	61105	61505	
		1997	1998	61105	61505	
F-250/350 Super Duty		1999	2015	61232	61332	Z
F-450 Super Duty	Excluding Cab & Chassis	2008	2011	61232	61332	Z
<b>TOYOTA</b>						
Tundra	Short Bed	2007	2012	61225	n/a	1
<b>UNIVERSAL</b>						
Universal Rail Kit	Raw Finish	n/a	n/a	61102	61502	

**\* While Supplies Last**

**Footnotes:**

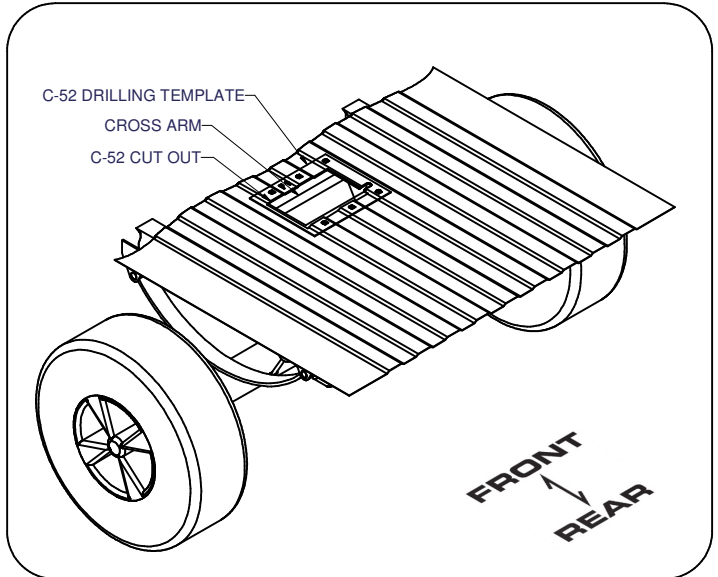
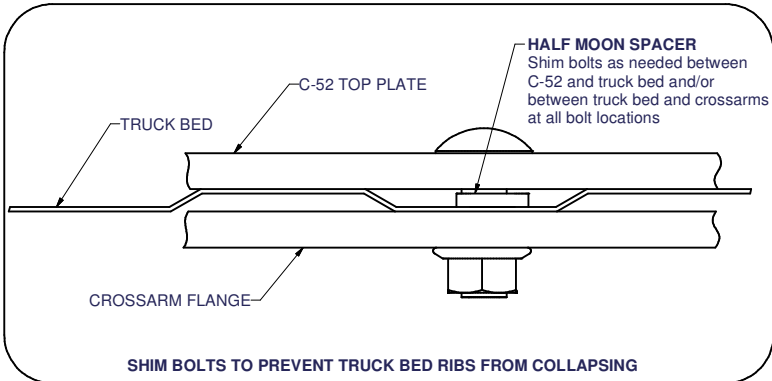
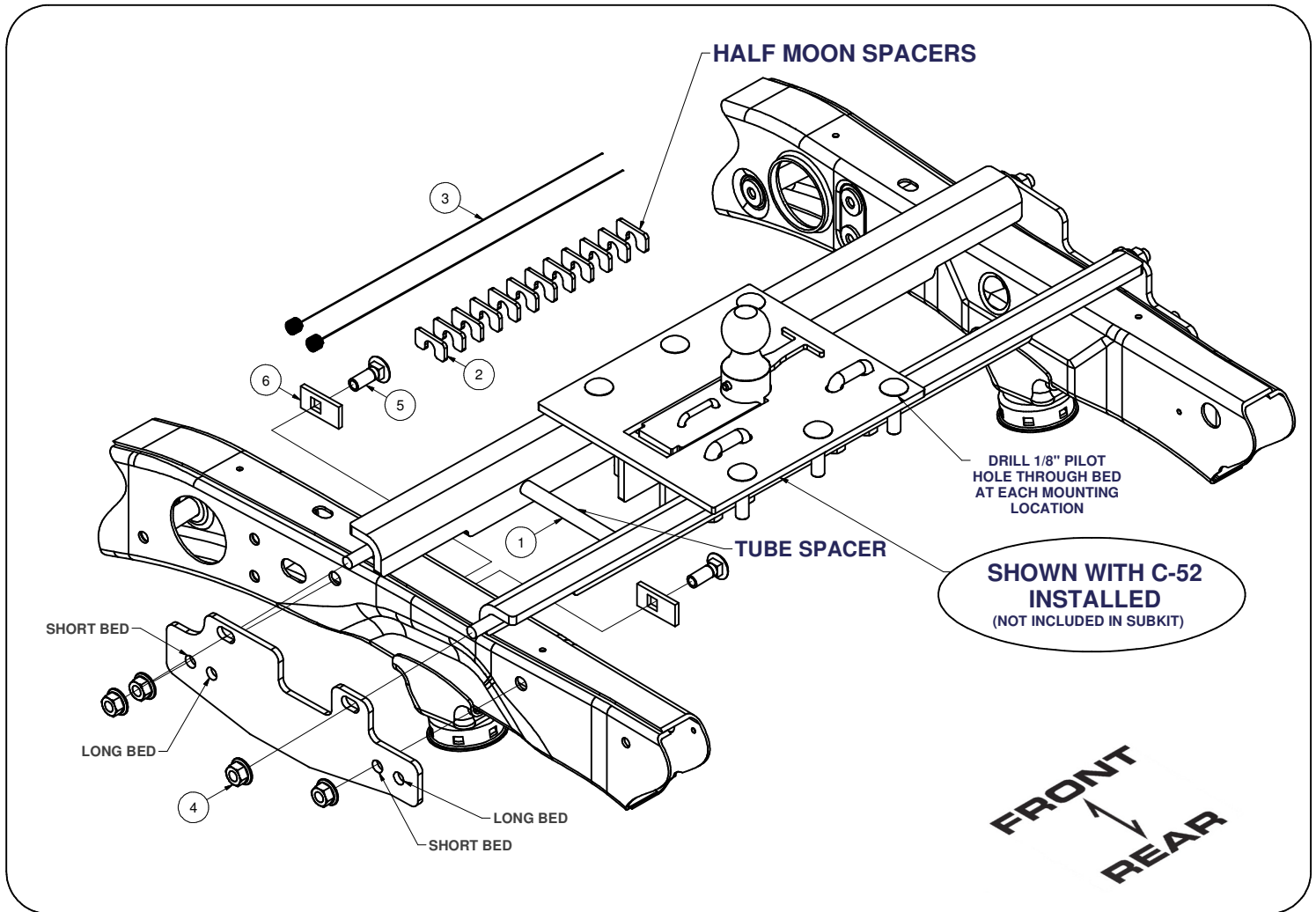
Z = No Drill

1 = Do not exceed recommended vehicle towing capacity.

61301

2011-CURRENT CHEVROLET / GMC 3/4 TON HD AND 1 TON

30,000 LBS GTW GOOSENECK KIT



Curt Manufacturing Inc., warrants this product to be free of defects in material or workmanship at the time of retail purchase by the original purchaser. If the product is found to be defective, Curt Manufacturing Inc., may repair or replace the product, at their option, when the product is returned, prepaid, with proof of purchase. Alteration to, misuse of, or improper installation of this product voids the warrant. Curt Manufacturing Inc.'s liability is limited to repair or replacement of products found to be defective, and specifically excludes liability for incidental or consequential loss or damage.

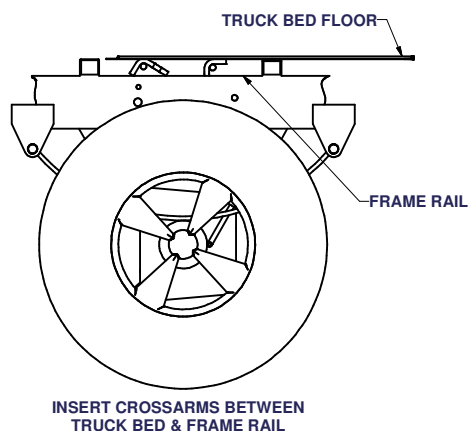
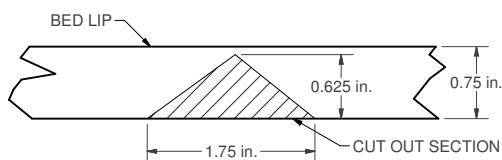
12/26/2012

30,000 LBS GTW GOOSENECK KIT

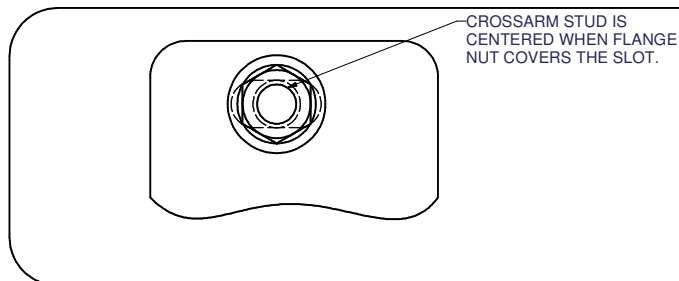
**INSTALLATION STEPS**

**WARNING!!** BRAKE, FUEL, AND ELECTRICAL LINES MAY NEED TO BE LOOSENEED OR REPOSITIONED TO PROVIDE CLEARANCE FOR NEW HARDWARE.  
ALL MODELS REQUIRE MODIFICATION OR REMOVAL OF HEAT SHIELDS

1. Remove spare tire for ease of installation.
2. Trim out heat shields between the bed supports on the passenger side of the vehicle.
3. Install cross arms by sliding them into gap between the truck bed and frame from inside the wheel well. The lip extending below the truck bed will need to be cut to allow the cross arms to slide into position as shown in diagram below. The front cross arm is 42 1/4" long and the rear cross arm is 41 11/16" long.
4. Align the side plates with the existing holes in the frame rails. Long and short bed vehicles will use different sets of holes. Fishwire 5/8" carriage bolts and CM-SP9 spacers through inside of frame rail and out mounting holes. Secure side plates with 5/8" hex flange nuts.
5. Rotate the cross arms until they contact the truck bed. Use provided tube spacer to achieve the correct distance between the cross arms. Center the threaded crossarm studs in the side plate slots as shown. Secure the cross arms with 5/8" hex flange nuts.  
**(Note: Do not tighten cross arms until center section installation is complete.)**
6. **Be sure the cross arms are vertical to the truck bed before drilling!** With cross arms secure and evenly spaced, drill a hole through the truck bed at the center of each cross arm mounting hole.
7. From inside the truck bed, center the six pilot holes with the letter "A" on the C-52 cutting template. Fasten the template to the truck bed with tape. Once fastened, drill four 1/8" pilot holes through section lettered "B".  
**(Be sure to check for brake lines and/or fuel lines before drilling.)**
8. With the pilot holes drilled, use a saw to cut out section "C". **(Cutting of bed rail supports may be necessary on some models.)**
9. Remove template and drill out the six holes with a 21/32" drill bit. Set the C-52 gooseneck (sold separately) hitch into position.
10. Attach the C-52 to the cross arms using (6) 5/8" carriage bolts and flange nuts. Torque bolts to 210 lb-ft.  
**(Note: Spacers must be installed at all bolt locations to prevent truck bed corrugations from collapsing.)**
11. After the C-52 has been fastened to the cross arms, torque 5/8" hardware connecting the cross arms to the side plates to 210 lb-ft.
12. Torque 5/8" hardware connecting side plates to vehicle frame to 210 lb-ft to finish installation.



Parts List			
ITEM	QTY	PART NUMBER	DESCRIPTION
1	1	CM-TS	.706 DIA. TUBE SPACER
2	12	CM-SP27	.188 x 1.00 x 2.00" U-SHAPE SPACER
3	2	5/8 FISHWIRE	5/8" FISHWIRE
4	8	5/8-11	HEX FLANGE NUT
5	4	5/8-11 x 1 3/4	CARRIAGE BOLT
6	4	CM-SP9	.250 x 1.25 x 2.50" SQUARE HOLE SPACER



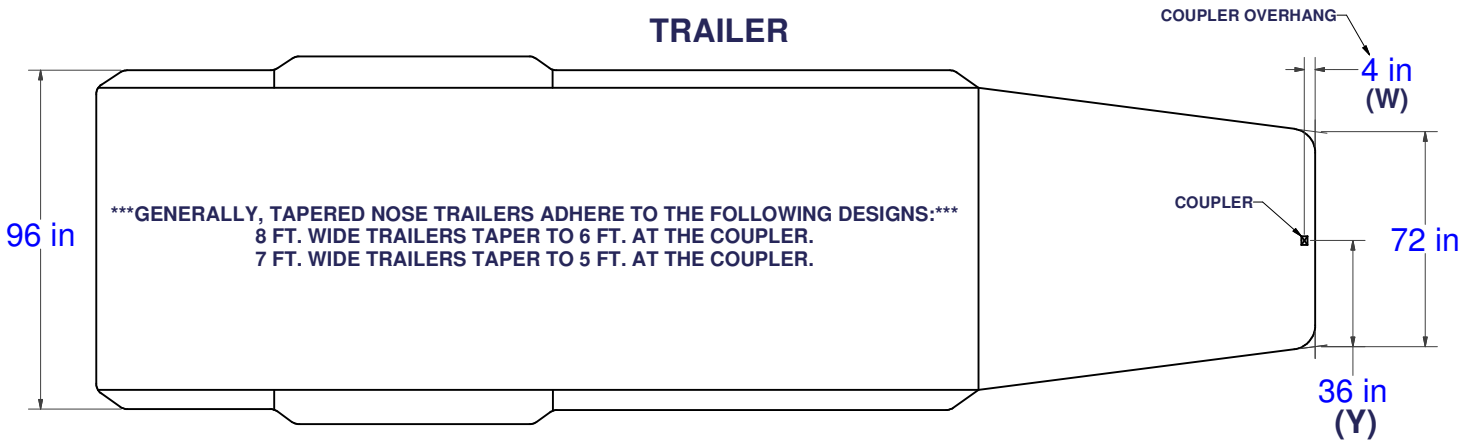
Curt Manufacturing Inc., warrants this product to be free of defects in material or workmanship at the time of retail purchase by the original purchaser. If the product is found to be defective, Curt Manufacturing Inc., may repair or replace the product, at their option, when the product is returned, prepaid, with proof of purchase. Alteration to, misuse of, or improper installation of this product voids the warrant. Curt Manufacturing Inc.'s liability is limited to repair or replacement of products found to be defective, and specifically excludes liability for incidental or consequential loss or damage.

\*\*\*DO NOT EXCEED VEHICLE MANUFACTURER'S RECOMMENDED TOWING CAPACITY.\*\*\*

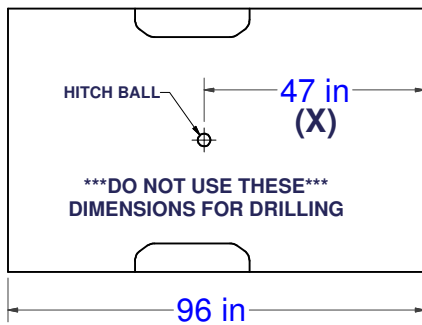
# CAB TO TRAILER CLEARANCE

\*\*REMOVAL OF REAR WINDOW ACCESSORIES MAY BE REQUIRED.\*\*

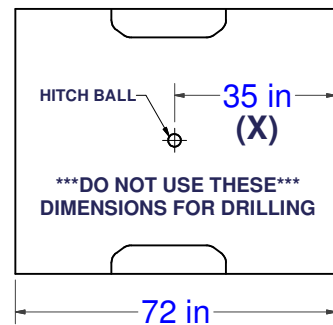
## TRAILER



## LONG & SHORT TRUCK BEDS



CAB OF TRUCK



CAB OF TRUCK

## \*\*WARNING REFERENCE CLEARANCE CLACULATOR BEFORE TOWING\*\*

### CLEARANCE CALCULATION

$$\begin{matrix} \text{(CAB TO BALL CENTER)} & - & 1/2 \text{ (TRAILER WIDTH)} & = & \text{(MINIMUM CLEARANCE)} \\ \text{(X)} & - & \text{(Y)} & = & \text{(Z)} \end{matrix}$$

IF THERE IS AN OVERHANG FROM THE COUPLER THEN THE EQUATION IS:

$$\begin{matrix} \text{[(X) - (W)]} & - & \text{(Y)} & = & \text{(Z)} \end{matrix}$$

\*\*\*IF (Z) IS POSITIVE, TRAILER **WILL NOT** INTERFERE WITH CAB OF TRUCK.\*\*\*  
IF (Z) IS NEGATIVE, TRAILER **WILL** INTERFERE WITH CAB OF TRUCK!!!

### EXAMPLE:

#### STANDARD TRAILER

$$X - Y = Z$$

$$35 - 36 = -1$$

(TRAILER **WILL INTERFERE** WITH CAB)

#### TRAILER WITH OVERHANG

$$\text{[(X) - (W)]} - Y = Z$$

$$\text{[35 - 4]} - 36 = -5$$

(TRAILER **WILL INTERFERE** WITH CAB)

### YOUR CALCULATION:

(CAB TO BALL CENTER) \_\_\_\_\_

(COUPLER OVERHANG) - \_\_\_\_\_

1/2 (TRAILER WIDTH) - \_\_\_\_\_

(MINIMUM CLEARANCE) = \_\_\_\_\_

Curt Manufacturing Inc., warrants this product to be free of defects in material and/or workmanship at the time of retail purchase by the original purchaser. If the product is found to be defective, Curt Manufacturing Inc., may repair or replace the product, at their option, when the product is returned, prepaid, with proof of purchase. Alteration to, misuse of, or improper installation of this product voids the warranty. Curt Manufacturing Inc.'s liability is limited to repair or replacement of products found to be defective, and specifically excludes liability for incidental or consequential loss or damage.