



Baseplate Installation Instructions

BX2623
2011 Ford F350

Commercial Application Only Installation Instructions

Serial Number

Please read BOTH these Installation Instructions and the General Towing Instructions before attempting to install or operate this equipment.

- Blue Ox® towing products and accessories are intended to be installed by Blue Ox® Dealers who are familiar with our products and have the equipment and knowledge to do “fit work.”

Attachment Tab Height: 22 1/4”

Attachment Tab Width: 31 7/8”

Bolt Torque Specifications

Torque in Foot-Pounds for Metric Bolts

Bolt Size	Grade 8.8	Grade 10.9
6MM	6	8
8MM	16	22
10MM	31	40
12MM	54	70
14MM	89	117

- Many Blue Ox® Baseplates are designed to use existing holes and hardware to mount the baseplate to the towed vehicle. Even though bolts are there, do not assume they are adequate for baseplate mounting. Always use hardware supplied in the hardware kit or existing hardware specified in the Baseplate Towing Installation Instructions.

Confirm the towability and pre-towing procedures for your vehicle with the owner’s manual or contact the vehicle’s manufacturer for specific towing procedures.

Bolt Torque Specifications

Torque in Foot-Pounds for Inch Bolts

Bolt Size	Grade 5	Grade 8
1/4”	10	14
5/16”	19	29
3/8”	33	47
7/16”	54	78
1/2”	78	119
5/8”	154	230



! WARNING

Failure to read and follow these instructions could result in separation of the towed vehicle from the tow bar, causing property damage, loss of towed vehicle, personal injury or death.

BX2623

2011 Ford F350 Commercial Application Only

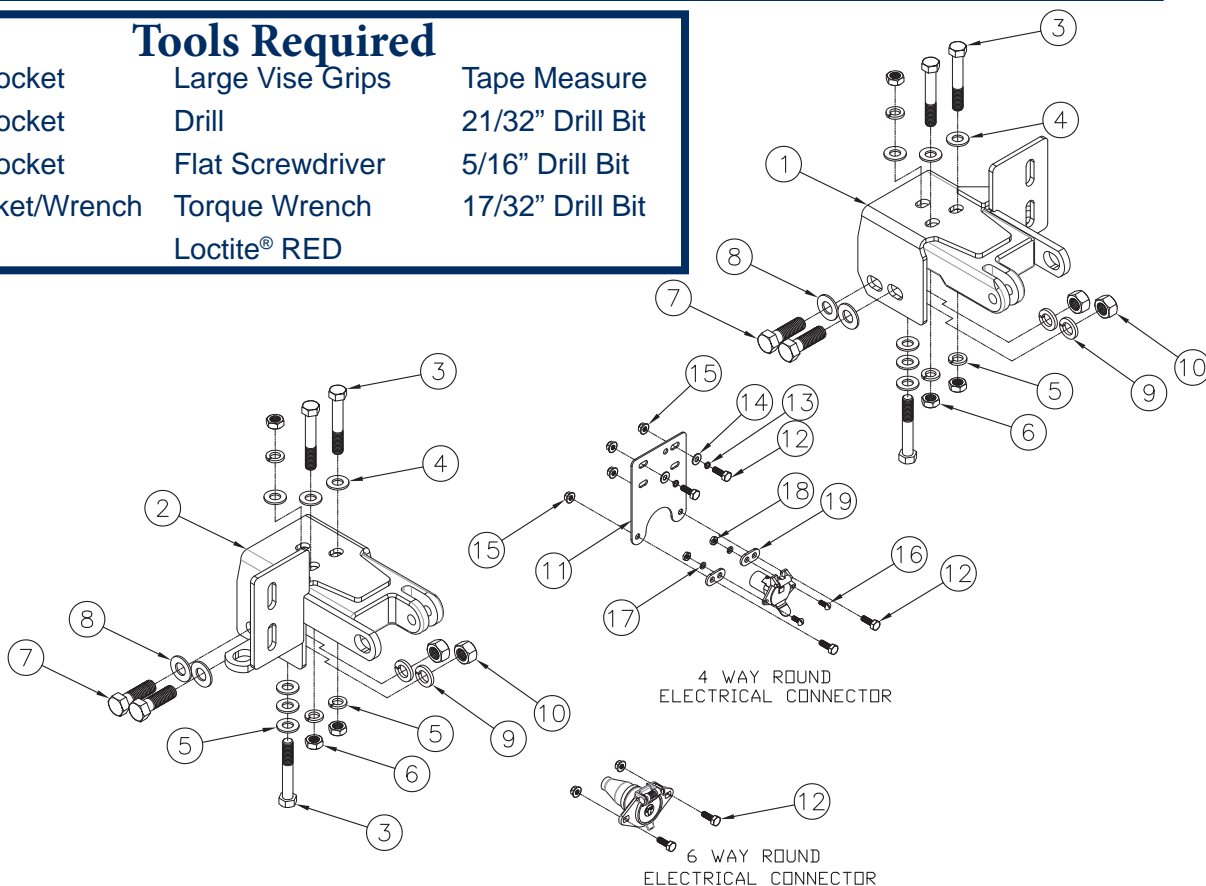
Installation Instructions

Parts List

Ref. No.	Qty.	Part #	Description
1	1	61-6768	WLDM'T, BP, DS, BX2623
2	1	61-6769	WLDM'T, BP, PS, BX2623
3	6	201-0369	1/2-13 X 3 1/2 HEX BOLT,GRD.5, ZP
4	12	203-0005	1/2 FLAT WASHER, ZP
5	6	203-0012	1/2 LOCK WASHER, ZP
6	6	202-0016	1/2-13 HEX CENT. DIMP. LOCK NUT, ZP
7	8	201-0351	5/8-11 X 2 HEX BOLT, GRD 5, ZP.
8	4	203-0006	5/8 FLAT WASHER, ZP
9	8	203-0013	5/8 LOCK WASHER, ZP
10	8	202-0008	5/8-11 HEX NUT, GRD. 8, ZP
11	1	101-6739	BRACKET, ELECTRICAL, BX2908
12	4	201-0050	1/4-20 X 3/4 HEX BOLT GRD.5, ZP
13	2	203-0001	1/4 FLAT WASHER, ZP
14	2	203-0008	1/4 LOCK WASHER, ZP
15	4	202-0069	1/4-20 HEX FLANGE WHIZ LOCK NUT, ZP
16	2	201-0192	10-32 X 1/2 SLOT, RD. HD. SCREW
17	2	203-0054	#10 LOCK WASHER
18	2	202-0047	#10-32 HEX NUT
19	2	101-5822	ADAPTER, 4 WAY CONNECTOR
	2	226-0049	BASEPLATE SAFETY CABLE, 36" CL IV (Not Shown)
	2	229-0512	QUICKLINK, 1/2, ZP (Not Shown)

Tools Required

13MM Socket	Large Vise Grips	Tape Measure
15MM Socket	Drill	21/32" Drill Bit
18MM Socket	Flat Screwdriver	5/16" Drill Bit
3/4" Socket/Wrench	Torque Wrench	17/32" Drill Bit
	Loctite® RED	



BX2623
2011 Ford F350
Commercial Application Only
Installation Instructions

Vehicle Weight:

Due to the weight of this vehicle, use of the BX7520P towbar is required. This baseplate will not work with standard Blue Ox towbar lugs or adapters due to the design of the attachment tabs. Also, you must insure your hitch rating is adequate for towing this vehicle.

Installation Notes: The fascia and air dam are removed for installation. Some drilling is required. Tow hooks must be removed and remain off the vehicle after installation.

The dimensional variations between otherwise identical vehicles can be considerable. While the baseplate was designed for easy installation, it may be necessary to tailor the baseplate slightly to compensate for auto manufacturer's tolerances. These minor adjustments may include filing a hole slightly, bending electrical rods or bending end plates.

The BX8848 4-Diode Wiring Kit is recommended for this vehicle.

Handling of some cosmetic parts when installing this product may require the use of protective covers, rags, specialty tools, etc. to prevent damage.

Installation Instructions:

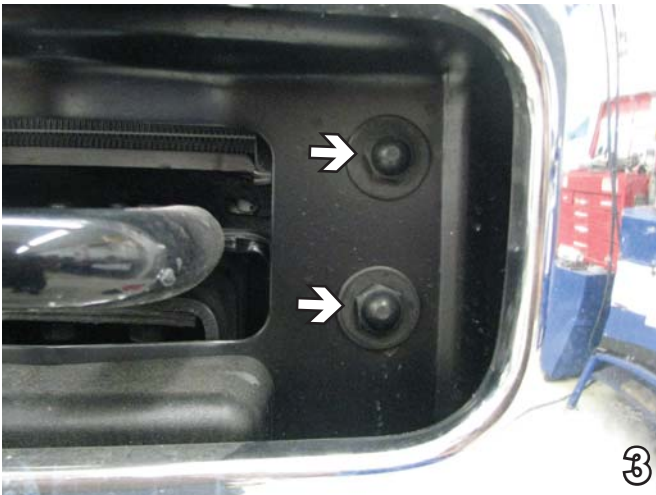


1. Using a 13MM socket, remove two metric bolts located just forward of the front tire. Do this to both sides of the vehicle. Set bolts aside to be reinstalled later.

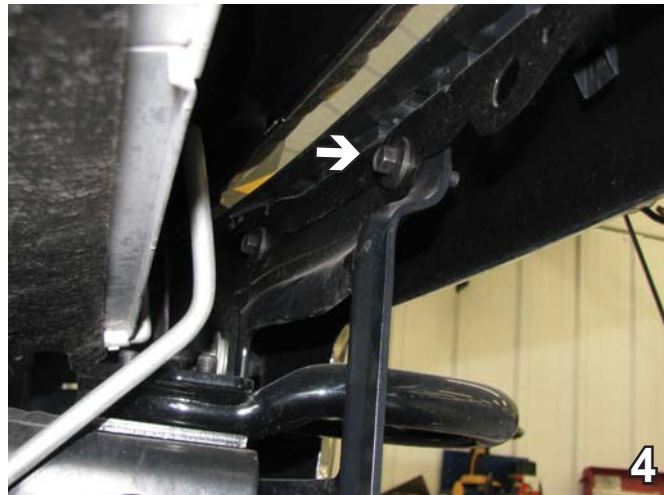


2. Remove three push pins from the bottom edge of the plastic cover. Set cover and push pins aside to be reinstalled later.

BX2623
2011 Ford F350
Commercial Application Only
Installation Instructions



3. Using an 18MM socket, remove the two bolts on the side of the bumper. Do this to both sides of the vehicle. Set the bolts and the bumper aside to be reinstalled later.



4. Remove the bolt which is exposed after removal of the cover. Set the bolt aside to be reinstalled later.



5. Remove the tow hook by removing the three bolts underneath it using a 15MM socket. Set tow hooks and bolts aside--they will not be used again. Use a 17/32" drill bit to ream the two front holes. Do this on both sides.



6. On the driver's side, it will be necessary to pull the Christmas tree pin from the coolant line bracket that goes into the frame in order to position the baseplate. It will be reinstalled later.

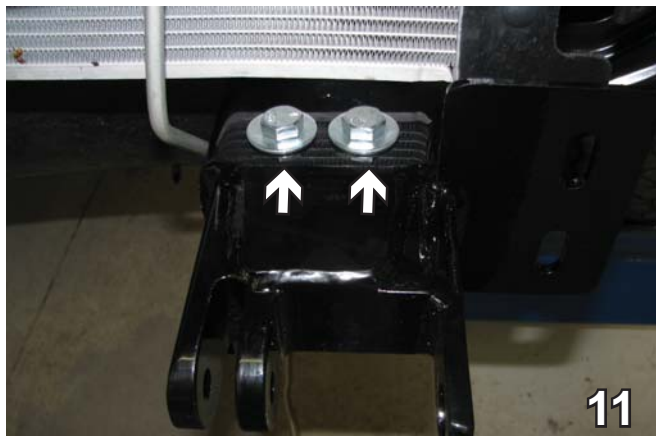
7. Using an 18MM socket, remove the two bolts on each side of the bumper support. Do this on both sides of the vehicle. Set bolts and support aside to be reinstalled later.
8. On the back of the bumper passenger side, some vehicles have a heater core element plug. If so, the Christmas tree pin will need to be released. Also remove the extension from the end of the frame rail.



BX2623
2011 Ford F350
Commercial Application Only
Installation Instructions



9. On the passenger side back bottom lower radiator, remove the push pin from rubber air dam. Set the pin and the air dam aside to be reinstalled later.

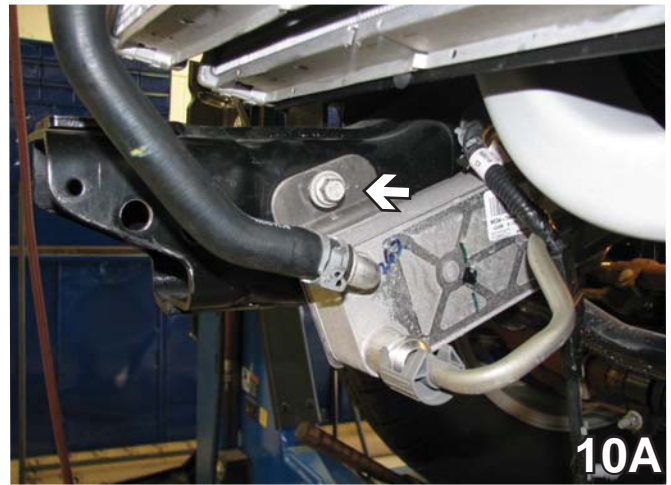


11. Slide the baseplate over the frame rail. Align with the top holes. Insert 1/2-13 x 3 1/2" hex bolts with 1/2" flat washer on the top. Attached to 1/2" lock washers and 1/2-13 hex nuts. Do this on both sides. Tighten with Loctite Red.

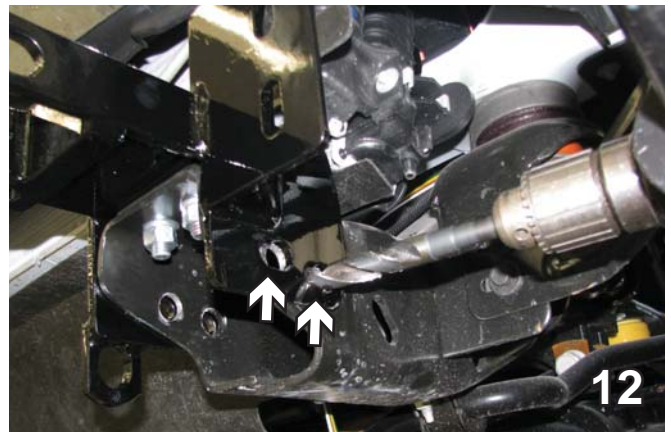
When using power drills be aware of the dangers of torque and drill bit length.

BE SURE TO USE LOCTITE® RED ON ALL BOLTS BEFORE TIGHTENING. TIGHTEN ALL BOLTS ACCORDING TO THE TORQUE CHART ON THE FRONT PAGE OF THESE INSTRUCTIONS OR ON PAGE 3 OF THE BASEPLATE TOWING GENERAL INSTRUCTIONS.

12. Align the baseplate with the existing holes in the frame, With the baseplate as a template, use a 17/32" drill bit to ream out the holes on both sides of the frame rail if needed. Do this on both sides of the vehicle.



10. Using a 13MM socket remove the three metric bolts from the coolant transfer box on the passenger side. Then pull the box out of the way so that the side holes can be drilled using the baseplate as a template.



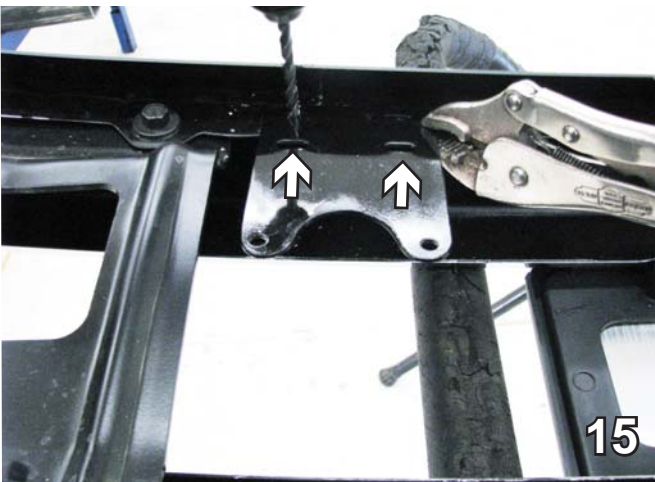
BX2623
2011 Ford F350
Commercial Application Only
Installation Instructions



13. Slide the lower support bumper brace back over. It may need to be widened a bit. Loosely install all four 5/8-11 x 2" bolts with 5/8 flat washers attached to 5/8" lock washers and 5/8-11 hex nuts on the inside. Then use Loctite Red and tighten. Do this on both sides.

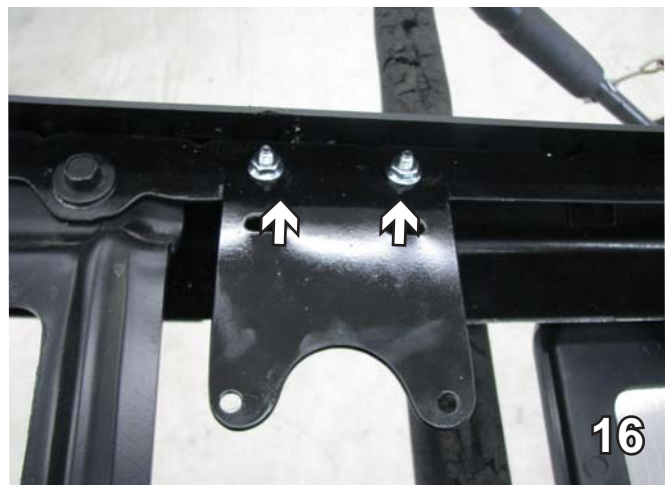


14. Attach the permanent baseplate safety cables to the provided convenience link on the baseplate. The photo above shows the recommended installation of the cables to frame of vehicle (see white arrow). Additional options may interfere with suggested mounting; in this case secure the cables to a solid piece of the frame as described in the instructions included with the permanent baseplate safety cables. Be sure the safety cables do not rub against any hoses or moving parts. Do this to both sides of the vehicle.



15. Place the metal bumper face down. Position the electrical bracket over the two existing holes on the inside top driver's side. Drill out the hole on the left using a 5/16" drill bit.

Be sure that **ALL** electrical connections are plugged in properly and functioning **BEFORE** installing the fascia.



16. Install 1/4-20 x 3/4" bolts with 1/4" flat washers, 1/4 lock washers and 1/4-20 whiz nuts.

17. Reinstall bumper, bolts and reconnect wiring. The installation of the baseplate is complete.

BX2623
2011 Ford F350
Commercial Application Only
Installation Instructions

Install the tow bar and safety cables according to the instructions provided in their packages. When demonstrating this to the customer, be sure to give all the contents and packages to the consumer.

Do **NOT** substitute other devices if the tow bar pins and clips are misplaced.

DEALER or INSTALLER:
Be certain the user receives the instruction sheets for their products.



Install the electrical plug on the front of the fascia.



With standard attachment tabs.

If the baseplate is in an accident, it must be replaced. DO NOT use it again! An accident can cause unseen damage and using it again could result in more damage or serious injury. DO NOT use the baseplate if it is damaged or missing parts.