



OVER 35 YEARS OF INNOVATION, QUALITY, SAFETY.



TRUE FRAME MOUNTED CAMPER TIE DOWNS

IMPORTANT OWNER-OPERATOR INSTALLATION INSTRUCTIONS

C2211



REVISED version 7 BY: JL 08/5/15

TECH SUPPORT (800) 246-8132

**AFTER INSTALL, PLEASE GIVE
THIS BOOKLET TO YOUR CUSTOMER**

Warnings

Truck Bed and Camper Protection

Torklift **does not** recommend installing your camper on top of a plastic bed liner (or other compressible material such as foam). These materials can act as a spring, causing increased vertical truck camper movement independent of the vehicle. Plastic bed liners can slide on the truck bed surface, and the truck camper can slide on top of the bed liner. Using a plastic bed liner or similar compressible material will void your warranty and may additionally cause truck bed and/or camper damage.

Minor movement or settling can occur in some incidental harsh driving conditions (on or off-road). A rubber bed mat is recommended to protect the truck bed and camper, but is not a requirement to maintain the Torklift legendary lifetime warranty.

Suspension

To significantly reduce body roll, sag and sway Torklift strongly recommends the StableLoad. Torklift International StableLoads improve safety, handling, and to help level your truck. More information can be found at (www.Torklift.com/stableload).

If your truck is additionally equipped with suspension air bags Torklift cautions against over pressurization as this may lead to unsafe vehicle handling characteristics. We have found that airbags used in conjunction with StableLoads have allowed operators to lower air bag pressure by 50% or more. Only pressurize suspension air bags enough to level the truck.

C2211 Parts Inventory

2 - Tie Down Receivers	2 - Special Bent Inserts (6 1/2"(16.5cm) with 1 1/2"(3.8cm) shim)
2 - 1/4" Pins	8 - 1/2" x 1 1/2" Hex Bolts
2 - 1/2" x 1 1/4" Hex Bolts	6 - 1/2" Thin Nylock Nuts
2 - 1/2" Star Washers	2 - Two Hole Angle Brackets
2 - 1/2" Lock Washers	2 - 11/16" x 2 1/2" x 3/16" Flat Washers
2 - 1/2" Flat Washers	2 - 1/2" Hex Nuts
2 - M16 Flange Nuts	2 - Single-hole Angled Plate (06 models only)

1. On 04-06 models, start by taking two 1 1/2" bolts and thread on two nylock nuts so that they are approximately centered on the threads. Repeat step for one 1 1/4" bolt and nylock nut. 07-13 models use all three 1 1/2" bolts with nylock nuts (**See Photo 1.1**).

2. The tie down will have three nuts welded on for set bolt adjustment purposes. 04-06 models, thread one 1 1/4" bolt with nylock nut into the bottom hole (**Photo 1.1**), and thread two 1 1/2" bolts with nylock nuts into the remaining two upper holes. 07-13 models use all three 1 1/2" bolts with nylock nuts (**See Photo 1.1**).

3. Beginning with the driver's side, locate front leaf spring bracket (**Photo 3.1**) and remove the factory nut using 15/16" wrench and 12mm wrench (**Photo 3.2**).

4. Place the tie down's slotted hole over the front leaf spring bolt (**Photo 4.1 & 4.2**). On 04-06 models, place the two-hole angle bracket on top of bolt and tie down (**See Photo 4.3**). Place a 1 1/2" bolt with star washer through the two hole angle bracket and tie down (**Photo 4.4**), then place a flat washer, lock washer, and a nut on open end of bolt and tighten with 3/4" wrench. Replace leaf spring bracket nut in step 1 with lower profile M16 flange nut, then snug (**do not tighten**) (**See Photo 4.5**). 07-013 models will use 11/16" x 2 1/2" 3/16" flat washer provided, instead of two-hole angle bracket.

5. Back out the lower side adjustment set bolts until they contact the frame-to-cab mount, then using two 3/4" wrenches-placing one on bolt head and the other on the nylon nut. Keeping the wrench on the bolt head steady, tighten the nylock nuts until they wedge against the tie down as jam nuts (**Photo 5.1**). Use the top bolts to adjust the angle of the tie down until it's straight. Make sure all bolts are tight against the frame. ***Note:** Adjustment set bolts (**pointed out in Photo 1.1**) must touch the truck frames cab mount bracket to prevent tie down from rotating, (**Photo 5.2**). **On 2006 models only**, the top adjustment set bolt will not be in contact with the spring hanger bracket.

6. Repeat steps 1-3 for passenger's side.

***NOTE:** THE INCLUDED TIEDOWN INSERTS HAVE TWO PRE-DRILLED PIN LOCATIONS. WHEN HOOKING UP YOUR CAMPER, EITHER HOLE MAY BE USED PROVIDING THERE IS A MINIMUM OF 2" (5cm) CLEARANCE BETWEEN THE CHAIN/TURNBUCKLE ATTACHING ASSEMBLY AND THE TRUCK BED WALL. THERE ARE ALSO TWO PRE-PUNCHED HOLES LOCATED ON THE TRIANGULAR BULLET PLATE ON THE END OF EACH INSERT. WHILE EITHER OF THE TWO HOLES CAN BE USED, THE HOLE THAT PROVIDES THE GREATEST ANGLE IS PREFERRED.

Photo 1.1

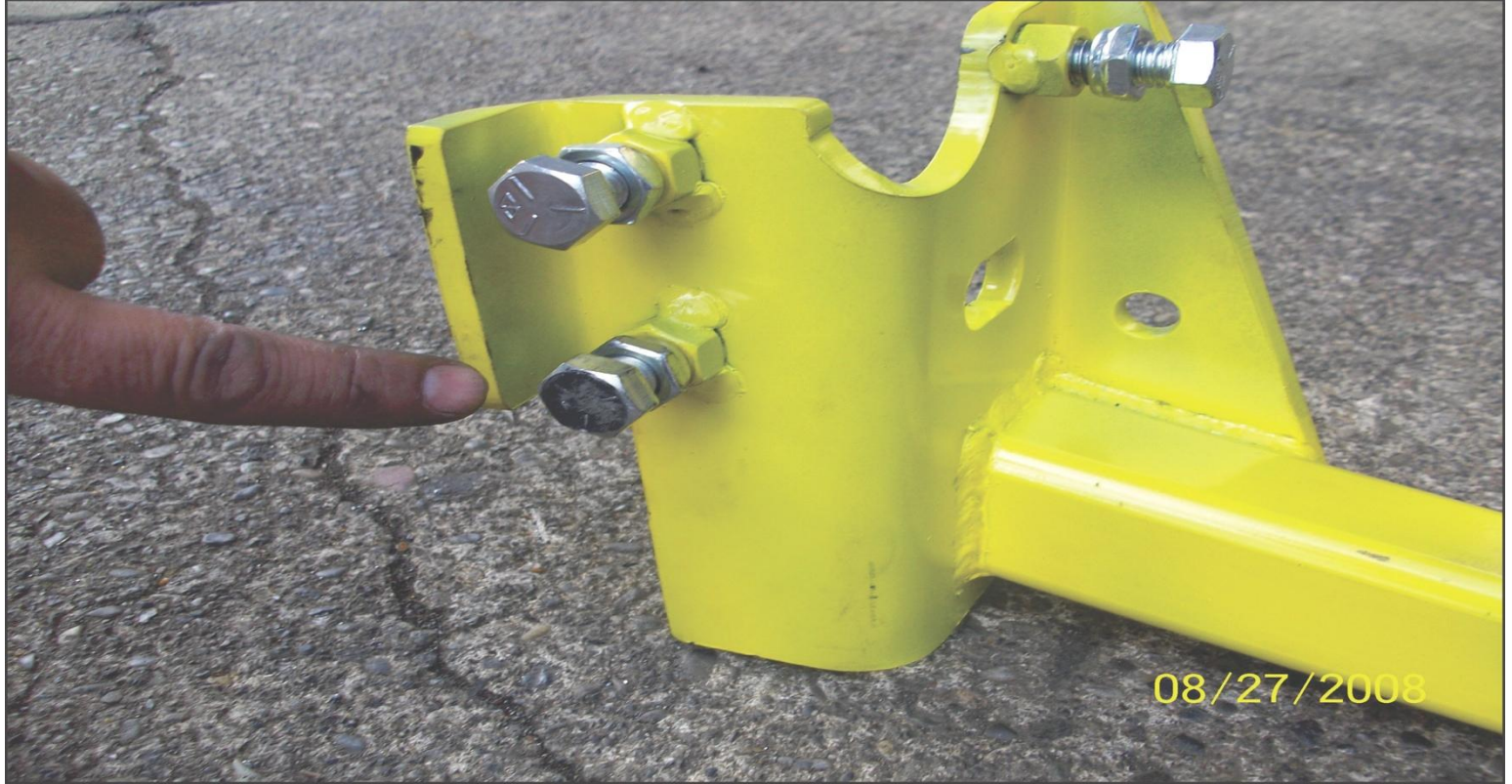


Photo 3.1



Photo 3.2



Photo 4.1



Photo 4.2 - 06 Models Only



Photo 4.3 - 04-06 Installation

Two-Hole Angle Bracket

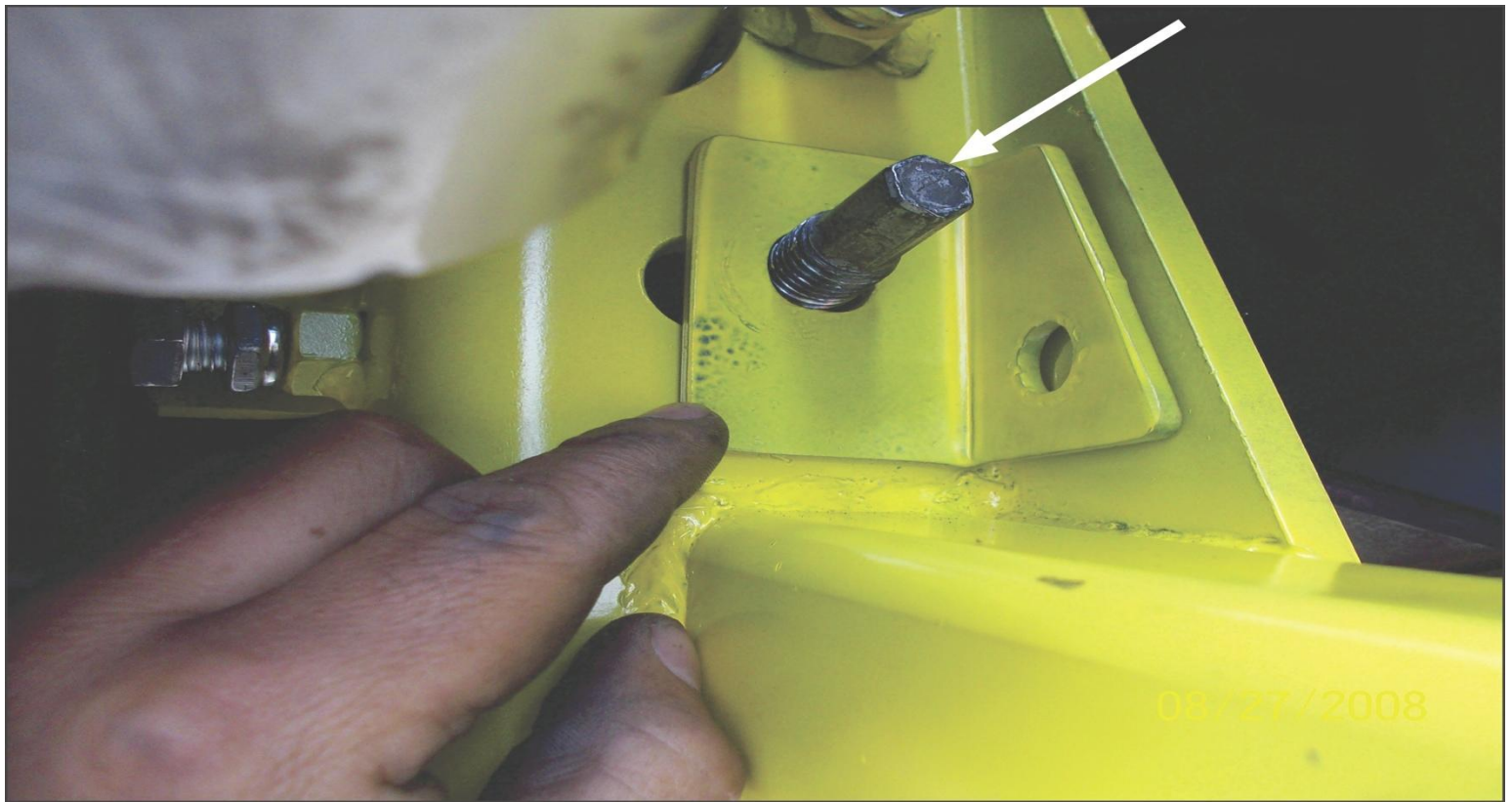


Photo 4.4 - 04-06 Installation

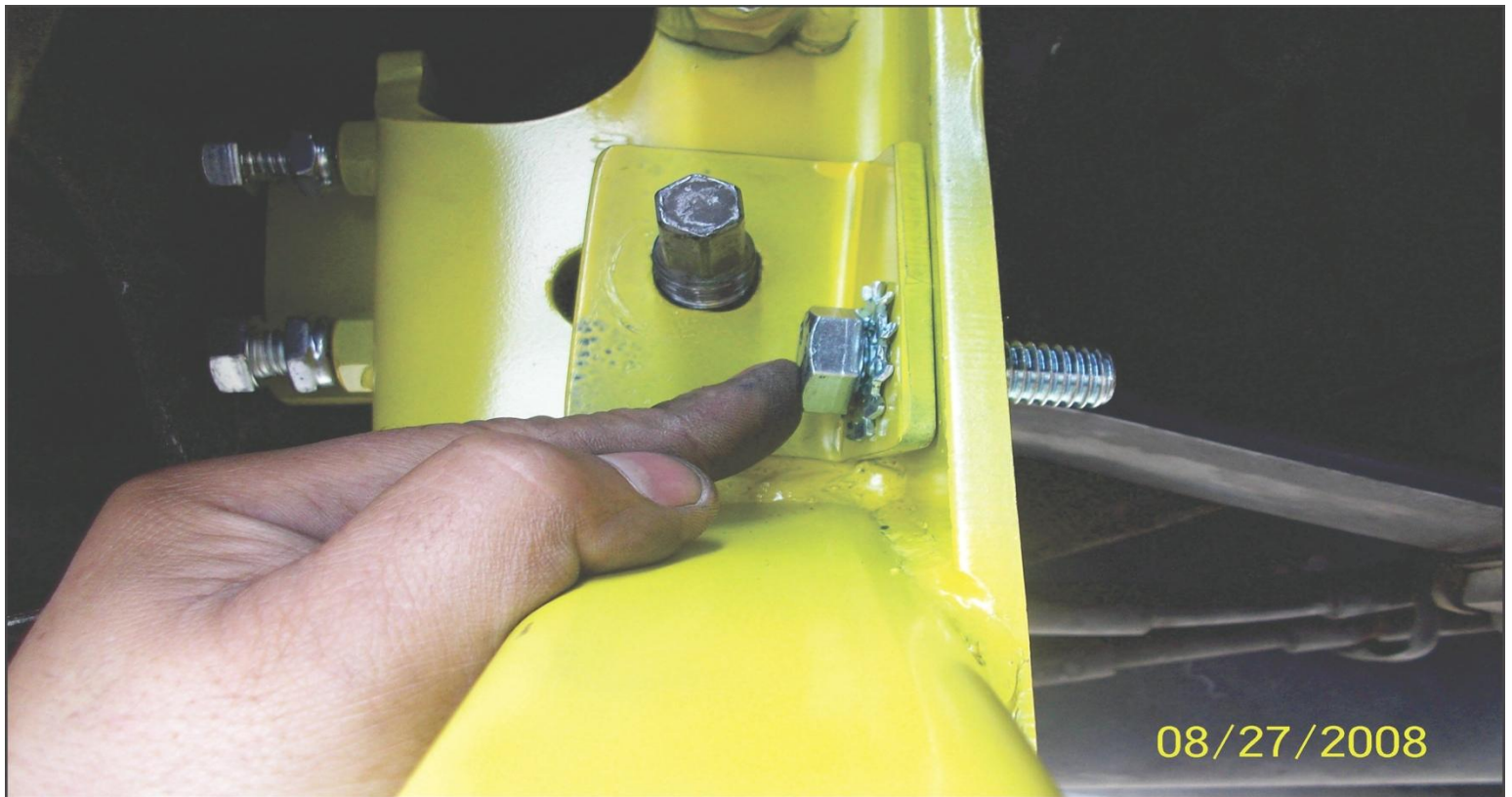


Photo 4.5 - 04-06 Installation

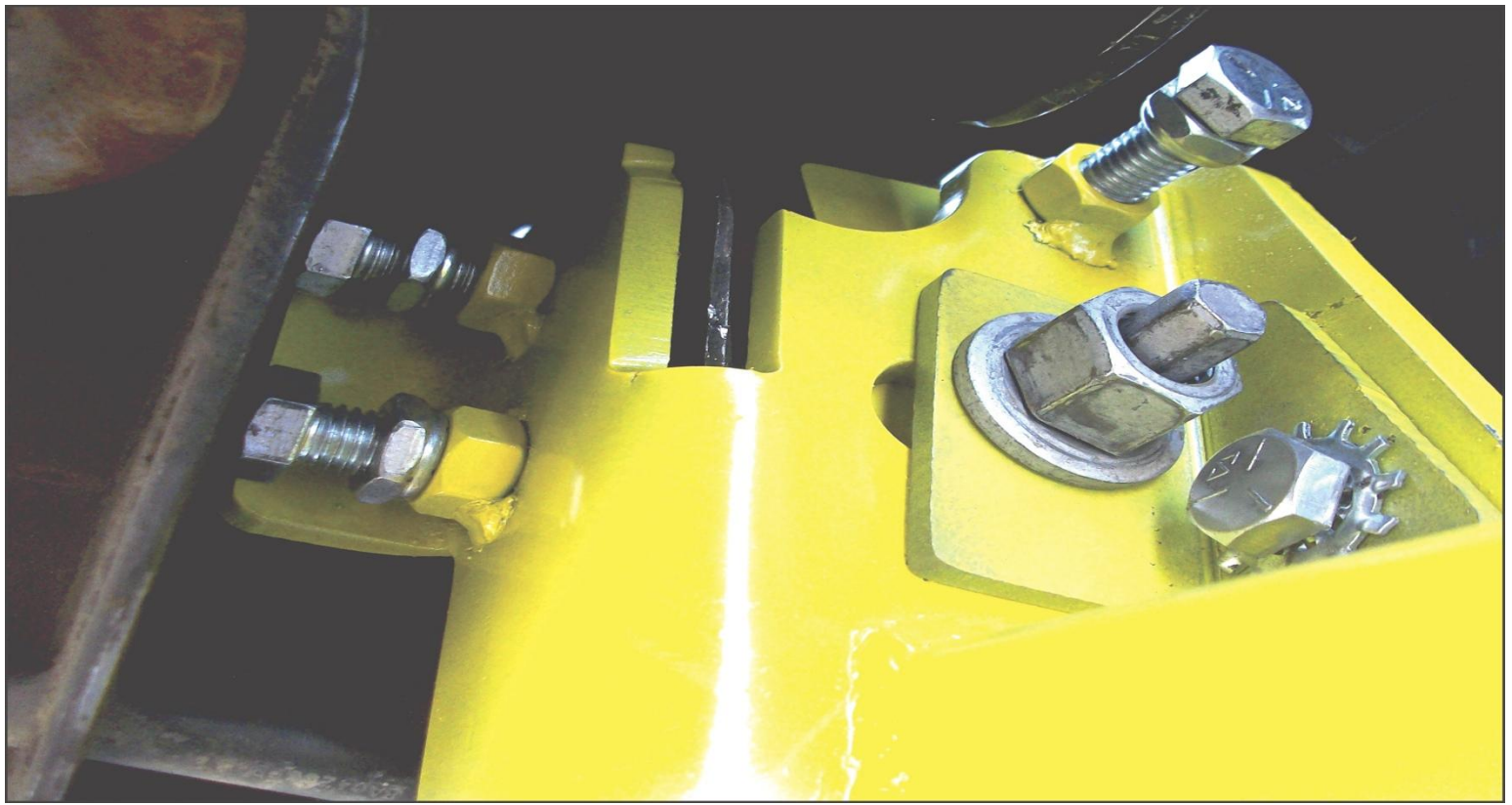


Photo 5.1 - 07-13 Installation

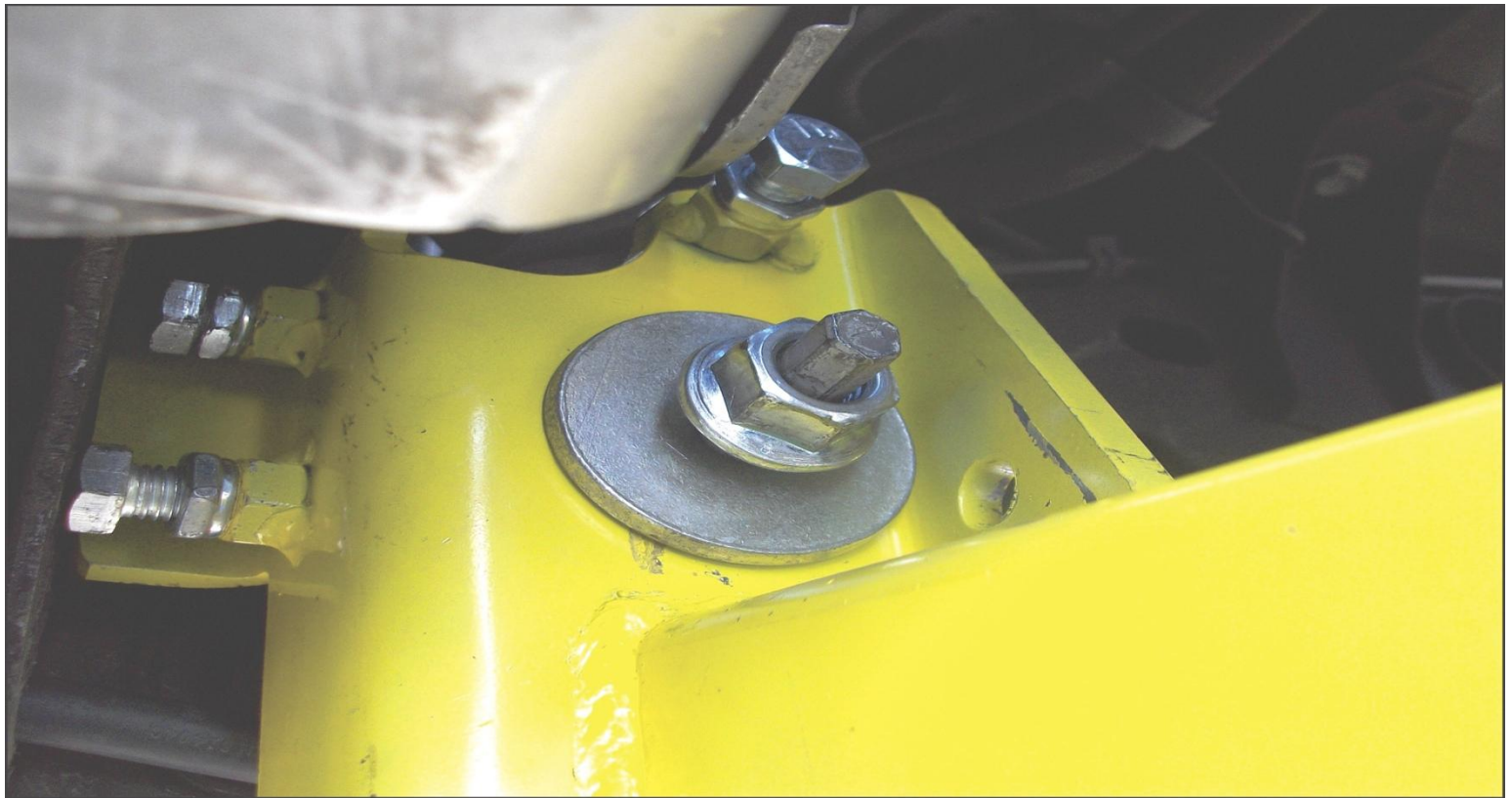
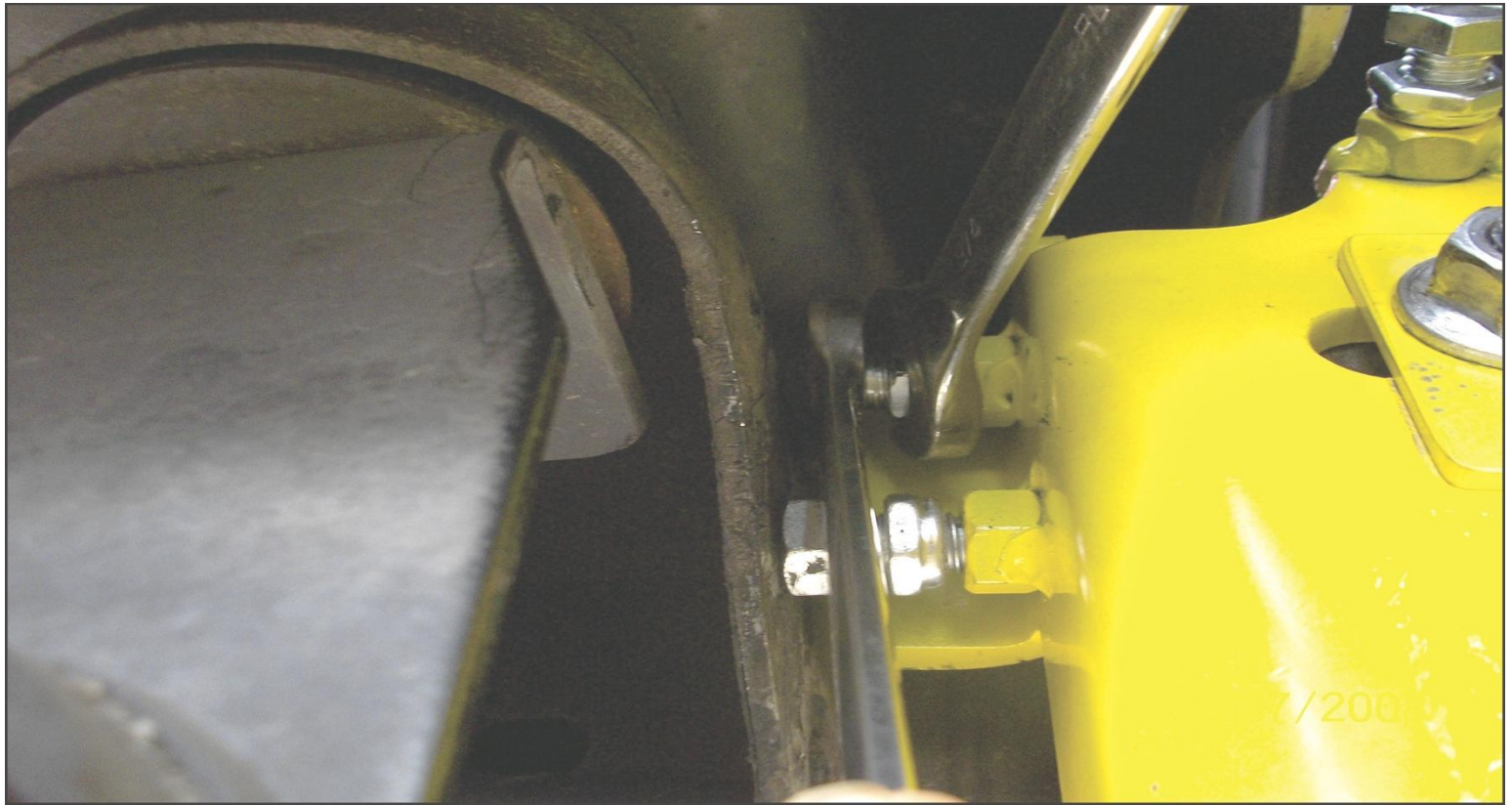


Photo 5.2 - All Models



TIEDOWN INSERT INSTALLATION INSTRUCTIONS

On one end of each of your tie down inserts is a triangular plate referred to by Torklift as a bullet plate. Your tie down inserts should be installed with the shorter side of the bullet plate facing away from each other, i.e.. The shorter side of the front insert should point to the front of the truck and the shorter side of the rear insert should point towards the rear of the truck.

Once installed, attach the TorkLift directional stickers to the face of the bullet plate on the insert as a reminder.

DRIVERS SIDE FRONT



DRIVERS SIDE REAR



IMPORTANT NOTE: *Your tie down inserts are designed to have clearance inside of the receiver. This is to account for road debris, as well as aid in installation and removal. Some rattle may be expected if the inserts are left installed while not under load from the camper.*

INSTRUCTIONS FOR FINISH MAINTENANCE **OF TORKLIFT PRODUCTS**

POWDER COATED STEEL:

To keep your Torklift products looking good follow these guidelines. All steel powder coated Torklift products are sandblasted for maximum adhesion and use a high quality industrial urethane based powder coat. Due to the extreme, harsh, undercar environment that your Torklift products live in, (consistently sprayed with corrosive road chemicals such as salt, and road debris), Torklift does not warranty the powder coated finish.

To minimize corrosion from these factors on powder coated steel products, Torklift recommends regularly cleaning and inspecting the powder-coated surface and touching up any affected areas with enamel or urethane based aerosol paint product. If there are any areas of surface rust, there are also aerosol spray rust converters available on the market that can be used as a preparation to touch-up paint application. These finish maintenance products are available at any automotive parts supplier.

POLISHED STAINLESS STEEL:

Torklift utilizes quality grade 304 stainless steel in our stainless steel polished products. 304 stainless steel is well known for its anti-corrosive properties.

However, in some environments such as coastal regions or when coming in contact with some road chemicals, corrosion may occur.

For a quick clean simply use WD40 and a cloth rag. We also recommend occasional polishing of our polished stainless products to maintain their attractive finish. Use an approved stainless steel chrome or aluminum mag wheel polish cleaning product, which can be purchased from any automotive parts supplier.

Torklift International Limited Lifetime Warranty Information

322 Railroad Ave North, Kent, WA 98032

Torklift will require proof of purchase to register, with pictures of any defective product before issuing a replacement. Torklift will not register any product without proof of purchase, which can be faxed, scanned, emailed, or mailed to the information provided below. Torklift warrants its hitches, custom hitch receivers, frame mounted tie downs, turnbuckles, and accessories (excluding wire harnesses which carry a 90 day warranty) from date of purchase against defects in material and workmanship under normal use and service for the ownership life of the original consumer purchaser. **ALL COMMERCIAL APPLICATIONS ARE WARRANTED FOR A PERIOD OF 90 DAYS FROM THE DATE OF INSTALLATION/SERVICE.** Torklift will replace **FREE OF CHARGE** any part, which proves defective in material or workmanship when presented to Torklift, **TRANSPORTATION CHARGES PREPAID** by purchaser, at the address above. **THIS WARRANTY IS LIMITED TO DEFECTIVE PARTS REPLACEMENT ONLY. LABOR CHARGES AND/OR DAMAGE INCURRED IN INSTALLATION OR REPLACEMENT, AS WELL AS INCIDENTAL AND CONSEQUENTIAL DAMAGES CONNECTED THEREWITH ARE EXCLUDED.** This warranty does not include the finish or paint on our products. Rusting, cracking or peeling of the finish is also excluded. Some states do not allow the exclusion or limitation of incidental or consequential damages, so the above limitation or exclusion may not apply to you. Any damage to Torklift products as a result of misuse, abuse, neglect, accident, improper installation or any use violation of instructions furnished by Torklift or **WHEN USED IN ANY COMMERCIAL APPLICATION WILL VOID THE WARRANTY.** This warranty gives you specific legal rights, and you may also have rights, which vary from state to state. With warranty service, you may be able to go to a small claims court, a state court or a federal district court.



OVER 35 YEARS OF INNOVATION, QUALITY, SAFETY.

**322 Railroad Ave North, Kent, WA 98032
Phone (800) 246-8132 Fax (253) 854-8003**

or visit our website: www.TorkLift.com

Dear Valued Customer,

Thank you for making TorkLift your choice for truck, camper packages and accessories for your vehicle. By choosing TorkLift products, you have chosen a company that has been serving the RV industry for nearly 40 years and whose name has become synonymous with strength, quality and advanced design and installation.

Please take a few moments of your time to complete the Product Registration Warranty Card on the next page. When registering your newly purchased TorkLift products, you can be assured that your contact information is secure and that you and your product are getting the attention and respect that you deserve.

Thank you again for choosing TorkLift quality products.

**Register for your lifetime warranty and receive a free Torklift
International gift.**

To Fax: Send copies of the questionnaire, warranty card and receipt to
253-854-8003

To E-mail: Send copies of the questionnaire, warranty card and receipt to
warranty@torklift.com

To Mail: Send to Torklift International **322 Railroad Ave North, Kent, WA 98032**

Frame Mounted Tie Downs

Leading the camper tie down industry in strength, quality, advanced design and installation. TorkLift TRUE frame mounted tie downs are far superior to all tie down systems available.

The TorkLift system is unique in its design and is patented. Four independent tie down points (with no belly or crossbar) working much like your receiver type trailer hitch as the inserts are removable allowing the system to be virtually undetectable when not in use.

They are designed for each make and model to fit tight to the frame so as not to compromise ground clearance. TorkLift tie downs are not universal 'one size fits all' therefore all the problems with correct fit for each particular application have been eliminated.

Original SuperHitch & SuperHitch Magnum

High strength extended hitch system engineered for safely towing all types of trailers behind your truck and camper. With a max towing capacity of 14,000 lbs.(6350kg) with an extension*, (17,000 lbs.(7711kg) to 20,000 lbs.(9071kg) without*) the Original SuperHitch and SuperHitch Magnum are rated the strongest in the industry.



CONTACT YOUR LOCAL DEALER FOR MORE DETAILS

***Weight capacity varies depending on the SuperHitch and SuperTruss extension setup.**



OVER 35 YEARS OF INNOVATION, QUALITY, SAFETY.

OFFICIAL WARRANTY REGISTRATION CARD

PLEASE FILL OUT THIS FORM COMPLETELY AND RETURN TO TORKLIFT WITHIN
30 DAYS OF PURCHASE ACCOMPANIED BY A COPY OF YOUR ORIGINAL RECEIPT

TODAY'S DATE: _____

1. PART(S) PURCHASED

PART#: _____ PART#: _____
PART#: _____ PART#: _____

2. PURCHASER INFORMATION

NAME: _____

ADDRESS: _____

CITY: _____ STATE: _____ ZIP / POSTAL CODE: _____

PHONE: (____) _____ - _____ EMAIL: _____

3. TRUCK INFORMATION

YEAR: _____ MAKE: _____

MODEL: _____ BED LENGTH: _____

4. CAMPER INFORMATION

YEAR: _____ MAKE: _____ MODEL: _____

5. DEALER INFORMATION

PURCHASED FROM: _____

ADDRESS: _____

CITY: _____ STATE: _____ ZIP / POSTAL: _____

INSTALLED BY: ☐ OWNER ☐ ABOVE DEALER ☐ ANOTHER DEALER

IF ANOTHER DEALER, WHO: _____