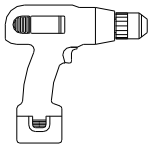


**IMPORTANT:**

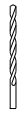
**Manufacturer is not responsible for negligent use of vehicle with mud flaps installed, including over-tightening of screws and bolts causing damage to vehicle or mud flaps.**

**NO-DRILL SYSTEM**

**TOOLS REQUIRED-**



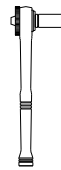
*Electric or Rechargeable Drill*



*1/4" Drill Bit*

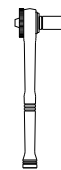


*Push Pin Removal Tool*



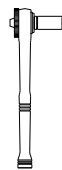
OR

*3/8" Open Wrench or Socket Wrench*



OR

*5/16" Open Wrench or Socket Wrench*

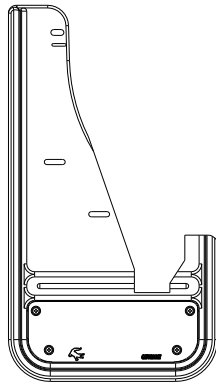


OR

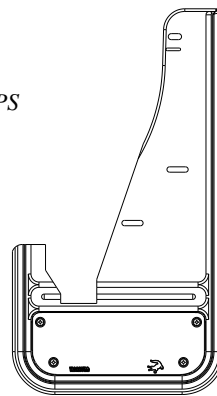
*7/16" Open Wrench or Socket Wrench*

**FLAPS**

*(1) Flap Front, DS*



*(1) Flap Front, PS*

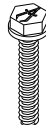


**PARTS BAG # 766740**

**a) (2) Screw, Machine SS, #18-8, 10-24 x 1" Hex**  
Part #012022



**b) (4) Screw, Sheet Metal SS, Blk, M4.2 x 1"**  
Part #016041



**c) (2) Capscw, SS 1/4" - 20x1"**  
Part #014007



**d) (4) Spring Nut #28, 9/16" Reach**  
Part # 028004



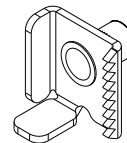
**e) (2) Washer, Lock 18-8SS, 10 Helicoil**  
Part #024001



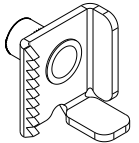
**f) (2) Nut, Hex SS, #10-24**  
Part # 025003



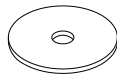
**g) (1) Mount Clip Driver's Side**  
Part #750582



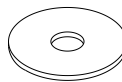
**h) (1) Mount Clip Passenger's Side**  
Part #750584



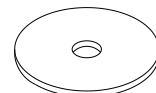
**i) (4) Washer, Flat 0.203" x 1", SS**  
Part #018031



**j) (2) Washer, Flat 0.281"ID x 1"OD, 18ga, SS**  
Part #018028

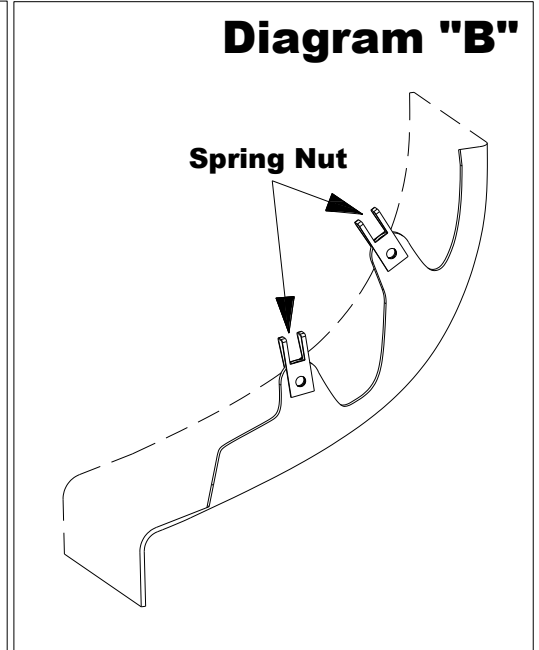
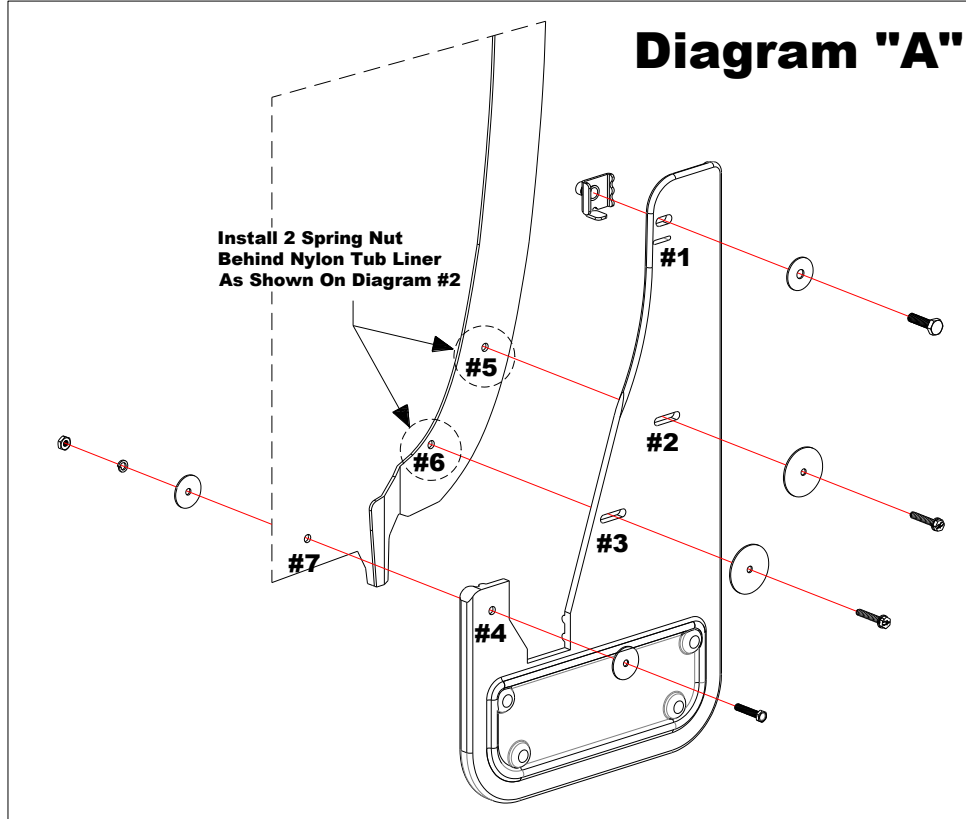


**k) (4) Washer, Flat 0.203" x 1.5", 18ga, SS**  
Part #018066



## INSTALLATION *(For ease of installation it is suggested that the wheel be removed)*

1. Before you install your Mud Flap Set, see the diagram and parts list for all necessary parts.
2. Remove the (2) factory nylon push pins on the inside of the fender and discard them.
3. Remove the (1) factory push pin on the underside of the fender and set aside to reinstall later.
3. Pull back the wheel well molding and inner liner to reveal the factory holes that contained the factory push pins.
4. Install the (2) spring nuts onto each of the (2) factory holes #5 & #6. (See Diagram #2)
5. Move plastic guard back into place and reinstall the factory push pin on the underside of the fender.
6. Loosely install the mud flap starting with hole #3, then #2 the inner fender through holes #6 & #5 using (2) sheet metal screws (016041) and (2) 1-1/2" flat washers (018066).
7. Install the mount clip on the back of the mud flap through slotted hole #1 and secure using a capscrew (014007) and flat washer (018028).
8. Install clip behind the fender lip and loosely secure all fasteners.
8. Using a bubble level or square, ensure that the mud flap is level. Viewing the vehicle from the back, the outer edge of the mud flap should appear parallel to the tires.
9. Carefully tighten all screws and double-check that the flap has remained level.
10. With a 1/4" drill bit, drill a hole through mud flap creating hole #4 and through the plastic liner creating hole #7.
11. Install the mud flap through hole #4 to the liner hole #7 using a machine screw (012022), two flat washers (018031), one lock washer (024001), and one hex nut (025003).
12. Repeat procedure for the passenger side.



Please check out our YouTube channel to see an install video for this application.

