



**OVER 40 YEARS OF INNOVATION, QUALITY, SAFETY.
IMPORTANT OWNER-OPERATOR INSTALLATION INSTRUCTIONS**

T2301



Version Number: 6, Date: 4/29/2021 By: LC

TECH SUPPORT (800) 246-8132

**AFTER INSTALL, PLEASE GIVE
THIS BOOKLET TO YOUR CUSTOMER**

Warnings

Truck Bed and Camper Protection

Torklift **does not** recommend installing your camper on top of a plastic bed liner (or other compressible material such as foam). These materials can act as a spring, causing increased vertical truck camper movement independent of the vehicle. Plastic bed liners can slide on the truck bed surface, and the truck camper can slide on top of the bed liner. Using a plastic bed liner or similar compressible material will void your warranty and may additionally cause truck bed and/or camper damage.

Minor movement or settling can occur in some incidental harsh driving conditions (on or off-road). A rubber bed mat is recommended to protect the truck bed and camper, but is not a requirement to maintain the Torklift legendary lifetime warranty.

Suspension

To significantly reduce body roll, sag and sway Torklift strongly recommends the StableLoad. Torklift International StableLoads improve safety, handling, and to help level your truck. More information can be found at (www.Torklift.com/stableload).

If your truck is additionally equipped with suspension air bags Torklift cautions against over pressurization as this may lead to unsafe vehicle handling characteristics. We have found that airbags used in conjunction with StableLoads have allowed operators to lower air bag pressure by 50% or more. Only pressurize suspension air bags enough to level the truck.

Parts Inventory

Item Description	QTY
TIE DOWN RECEIVERS	2
SPECIAL STRAIGHT 10 3/4" INSERTS	2
1/2" X 2" HEX BOLTS	2
1/2" STAR WASHERS	2
1/2" FLAT WASHERS	2
1/2" LOCK WASHERS	2
1/2" NUTS	2
1"(2cm) X 2"(5cm) PLATE WASHERS	2
1/4" PINS	2
1/2" BOLT FISHER	1

INSTALLATION INSTRUCTIONS:

1. Locate and inventory all parts to become familiar with all brackets
2. Find driver's side tie down receiver. Hold the bracket up to the side of the frame. (See **photo A-B-C page 5-6**). Remove the factory nut and washer from the front spring bolt. Discard the washer but save the nut, as you will be reusing it. Hold the tie down receiver over the spring bolt and reinstall the nut. (Hint: Use an extension, place some electrical tape over the end of the socket. This will hold the nut in the socket.) Start the nut onto the spring bolt, but do not tighten.
3. Locate the 1/2" X 2" hex bolt, a 1/2" star washer and the 1"(2cm) x 2"(5cm) plate washer. Place the star washer, then the plate washer onto the threads of the bolt. Thread a bolt fisher onto the bolt. Feed the straight end of the bolt fisher up through the leaf spring bracket, out the large hole, and through the upper hole in the tie down. Remove the bolt fisher, then secure the bolt with a flat washer, lock washer, and nut. Tighten both the factory nut and the upper bolt. Repeat for passenger side installation.
4. Find one straight insert and 1/4" pin and put the insert into the receiver using the hole in the insert. Install 1/4" pin.

***NOTE: THE INCLUDED TIE DOWN INSERTS COME WITH 2 PREDRILLED PIN HOLE LOCATIONS, WHEN HOOKING UP YOUR CAMPER, EITHER HOLE MAY BE USED PROVIDING THERE IS A MINIMUM OF 2" CLEARANCE BETWEEN THE CHAIN/TURNBUCKLE ATTACHING ASSEMBLY AND THE TRUCK BED WALL. THERE ARE ALSO 2 PRE-PUNCHED HOLES LOCATED ON THE TRIANGULAR BULLET PLATE ON THE END OF EACH TIE DOWN INSERT, WHILE EITHER OF THE TWO HOLES CAN BE USED, THE HOLE THAT PROVIDES THE GREATEST ANGLE IS PREFERRED.**

5. You should have at least 1” clearance between the insert and the lip of the box or after market accessory. Tighten all fasteners, 1/2” bolts to 80 ft. lbs.(108nm)

DO NOT INSTALL YOUR TRUCK CAMPER IN YOUR TRUCK ON TOP OF A DROP IN PLASTIC BEDLINER! AS YOUR CAMPER CAN SLIDE RESULTING IN SEVERE BED DAMAGE!!!!!! USING A RUBBER BED MAT WILL MINIMIZE MOVEMENT AND WILL ENSURE THE WARRANTY ON YOUR TIE-DOWN SYSTEM.



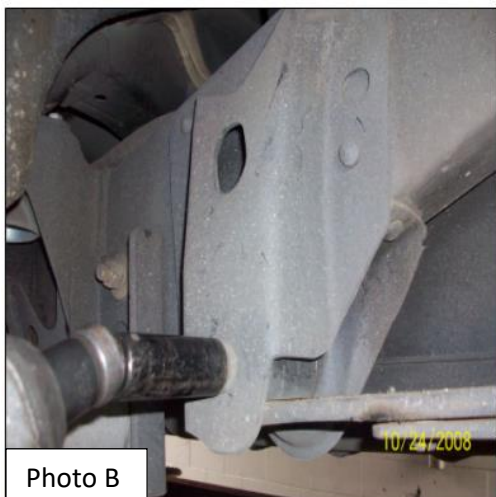


Photo B

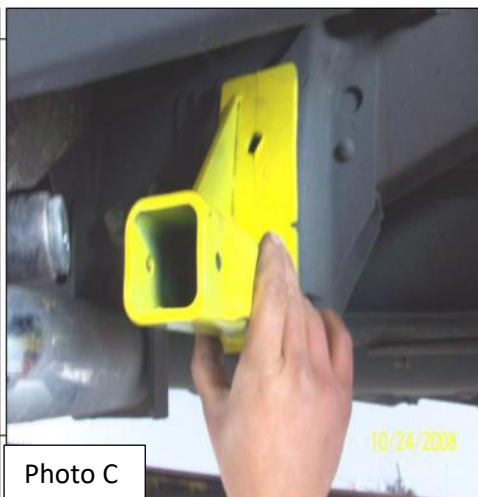


Photo C

IMPORTANT NOTE: Your tie down inserts are designed to have clearance inside of the receiver. This is to account for road debris, as well as aid in installation and removal. Some rattle may be expected if the inserts are left installed while not under load from the camper.

Installation is complete.

Torklift International Limited Lifetime Warranty Information

322 Railroad Ave North, Kent, WA 98032

Torklift will require proof of purchase to register, with pictures of any defective product before issuing a replacement. Torklift will not register any product without proof of purchase, which can be faxed, scanned, emailed, or mailed to the information provided below. Torklift warrants its hitches, custom hitch receivers, frame mounted tie downs, turnbuckles, and accessories (excluding wire harnesses which carry a 90 day warranty) from date of purchase against defects in material and workmanship under normal use and service for the ownership life of the original consumer purchaser. All plastic, rubber, and/ or electrical components maintain a warranty of up to one year from the date of the purchase. **ALL COMMERCIAL APPLICATIONS ARE WARRANTED FOR A PERIOD OF 90 DAYS FROM THE DATE OF INSTALLATION/SERVICE.** Torklift will replace **FREE OF CHARGE** any part which proves defective in material or workmanship when presented to Torklift, **TRANSPORTATION CHARGES PREPAID** by purchaser, at the address above. **THIS WARRANTY IS LIMITED TO DEFECTIVE PARTS REPLACEMENT ONLY. LABOR CHARGES AND/OR DAMAGE INCURRED IN INSTALLATION OR REPLACEMENT, AS WELL AS INCIDENTAL AND CONSEQUENTIAL DAMAGES CONNECTED THEREWITH ARE EXCLUDED.** This warranty does not include the finish or paint on our products. Rusting, cracking or peeling of the finish is also excluded. Some states do not allow the exclusion or limitation of incidental or consequential damages, so the above limitation or exclusion may not apply to you. Any damage to Torklift products as a result of misuse, abuse, neglect, accident, improper installation or any use violation of instructions furnished by Torklift or **WHEN USED IN ANY COMMERCIAL APPLICATION WILL VOID THE WARRANTY.** This warranty gives you specific legal rights, and you may also have rights which vary from state to state. With warranty service, you may be able to go to a small claims court, a state court or a federal district court.



INTERNATIONAL

322 Railroad Ave North, Kent, WA 98032

Phone (800) 246-8132 Fax (253) 854-8003

Or visit our website: www.TorkLift.com

Dear Valued Customer,

Thank you for making TorkLift your choice for truck, camper packages and accessories for your vehicle. By choosing TorkLift products, you have chosen a company that has been serving the RV industry for nearly 40 years and whose name has become synonymous with strength, quality and advanced design and installation.

Please take a few moments of your time to complete the Product Registration Warranty Card on the next page. When registering your newly purchased TorkLift products, you can be assured that your contact information is secure and that you and your product are getting the attention and respect that you deserve.

Thank you again for choosing TorkLift quality products.

Register for your lifetime warranty and receive a free Torklift International gift.

To Fax: Send copies of the questionnaire, warranty card and receipt to
253-854-8003

To E-mail: Send copies of the questionnaire, warranty card and receipt to
warranty@torklift.com

To Mail: Send to Torklift International 322 Railroad Ave North, Kent, WA 98032



OFFICIAL WARRANTY REGISTRATION CARD

322 Railroad Ave North, Kent, Wa 98032

Please fill out this form completely and return to Torklift within 30 days of purchase accompanied by a copy of your original receipt

1. PART(S) PURCHASED

TODAY'S DATE: _____

PART#: _____ PART#: _____

PART#: _____ PART#: _____

PART#: _____ PART#: _____

2. PURCHASER INFORMATION

NAME: _____

ADDRESS: _____

CITY: _____ STATE: _____ ZIP / POSTAL CODE: _____

PHONE: (____) _____ - _____ EMAIL: _____

3. TRUCK INFORMATION

YEAR: _____ MAKE: _____

MODEL: _____ BED LENGTH: _____

4. CAMPER INFORMATION

YEAR: _____ MAKE: _____ MODEL: _____

5. DEALER INFORMATION

PURCHASED FROM: _____

ADDRESS: _____

CITY: _____ STATE: _____ ZIP / POSTAL: _____

INSTALLED BY: _____ OWNER ABOVE DEALER ANOTHER DEALER

IF ANOTHER DEALER, WHO: _____